



Catalog: OM105130

Scan to get more validated information



# Rabbit anti-Zfp708 Antibody - middle region

Catalog: OM105130

☐ 100ug

## Product profile

Product name	Rabbit anti-Zfp708 Antibody - middle region
Antibody Type	Primary Antibodies
Immunogen	The immunogen for Anti-Zfp708 antibody is: synthetic peptide directed towards the middle region of Mouse Zfp708

## Key Feature

Clonality	Polyclonal
Isotype	IgG
Host Species	Rabbit
Tested Applications	WB
Species Reactivity	Mouse Human
Concentration	1 mg/ml
Purification	Affinity purified

## Target Information

Gene Symbol	Zfp708
Gene Synonyms	AU021768; BC038328; MGC102251; Rscan11
Gene Summary	The function of this protein remains unknown.
Alternative Names	AU021768, BC038328, MGC102251, Rscan11
Molecular Weight(MW)	61kDa
Sequence	529 amino acids

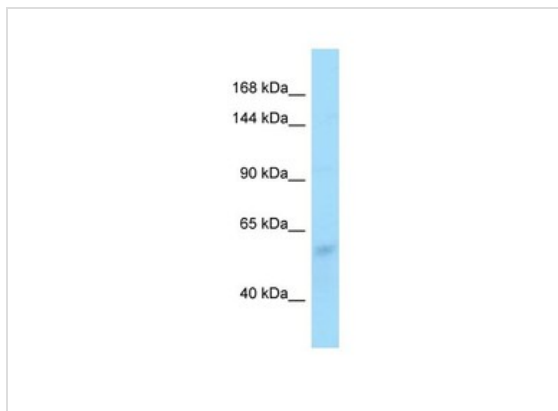
## Database Links

Entrez Gene	432769
-------------	--------

SwissProt ID	F2Z422
Protein Accession	NP_001012450

## Application

---



**Western blot**  
Host: Rabbit  
Target Name: Zfp708  
Sample Tissue: Mouse Lung lysates  
Antibody Dilution: 1.0ug/ml

<b>Application Notes</b>	<b>WB:</b> 1:500~1:2000 <b>Notes:</b> Optimal dilutions/concentrations should be determined by the researcher.
--------------------------	---

## Additional Information

---

<b>Form</b>	Liquid
<b>Storage Instructions</b>	Aliquot and store at -20°C. Avoid repeated freeze / thaw cycles
<b>Storage Buffer</b>	phosphate buffered saline , pH 7.4, 150mM NaCl, 0.02% sodium azide and 50% glycerol.
<b>Note</b>	The product is for research use only,not for use in diagnostic or therapeutic procedures.

# OmnimAbs.com

---

order@Omnimabs.com  
506 N. GARFIELD AVE #210 ALHAMBRA, CA 91801  
This product is for research use only and is not approved for use in humans or in clinical diagnosis. Primary Antibodies are guaranteed for 1 year from date of receipt

---