



Catalog: OM160731

Scan to get more validated information



# Raf-B Antibody (C-19) FITC

Catalog: OM160731

☐ 100ul

## Product profile

Product name	Raf-B Antibody (C-19) FITC
Antibody Type	Primary Antibodies
Modification Notes	Several serine/threonine protein kinases have been implicated as intermediates in signal transduction pathways. These include ERK/MAP kinases, ribosomal S6 kinase (Rsk) and Raf-1. Raf-1 is a cytoplasmic protein with intrinsic serine/threonine activity. It is broadly expressed in nearly all cell lines tested to date and is the cellular homolog of v-Raf, the product of the transforming gene of the 3611 strain of murine sarcoma virus. The unregulated kinase activity of the v-Raf protein has been associated with transformation and mitogenesis, while the activity of Raf-1 is normally suppressed by a regulatory N-terminal domain. Raf-A, a second member of the Raf gene family of serine/threonine protein kinases, exhibits substantial homology to Raf-1 within the kinase domain of the two molecules, but less homology elsewhere. Expression of Raf-B is highly restricted, with highest levels in the cerebrum and testis.

## Key Feature

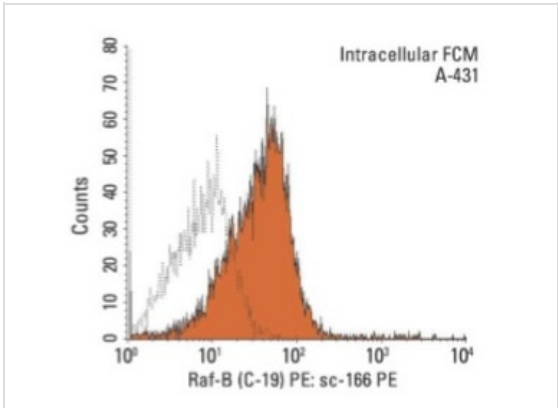
Clonality	Polyclonal
Isotype	IgG
Host Species	Rabbit
Tested Applications	WB ,IP ,IF ,FC ,ELISA
Species Reactivity	Human Mouse Rat
Concentration	1mg/ml
Purification	Affinity purified

## Target Information

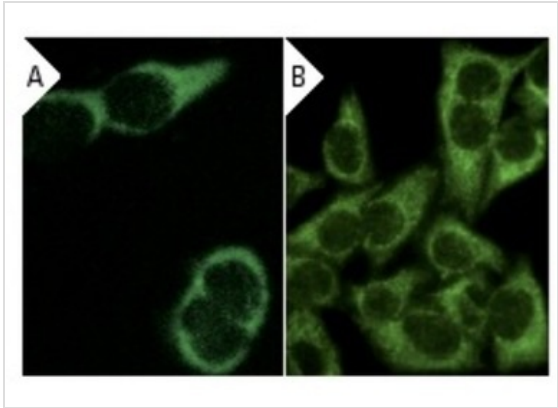
Alternative Names	epitope mapping at the C-terminus of Raf-B of human origin
Tissue Specificity	epitope mapping at the C-terminus of Raf-B of human origin

## Database Links

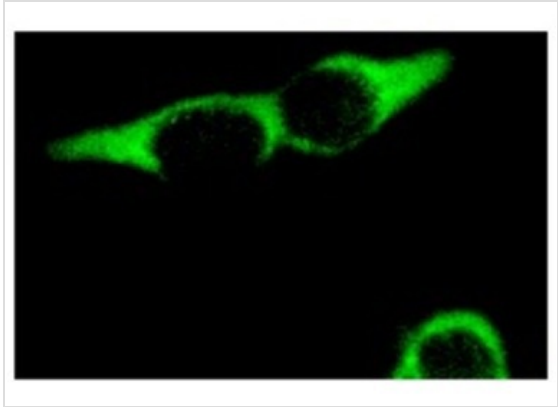
Application



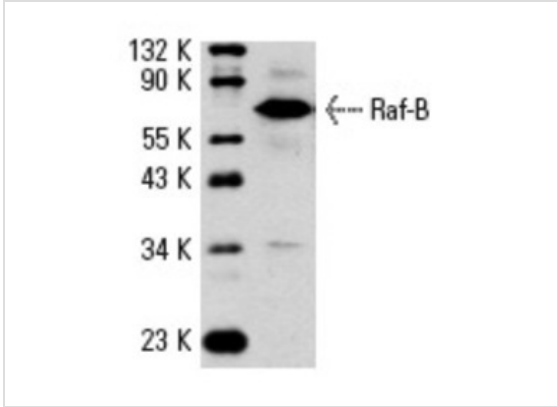
**Application**  
Intracellular FCM analysis of fixed and permeabilized A-431 cells. Black line histogram represents the isotype control, normal rabbit IgG: .



**Application**  
Immunofluorescence staining of methanol-fixed A-431 cells showing cytoplasmic localization using indirect FITC (A) staining and HeLa cells using direct Alexa Fluor 488 (B) staining.



**Application**  
Immunofluorescence staining of methanol-fixed A-431 cells showing cytoplasmic staining.



**Application**  
Western blot analysis of Raf-B expression in PC-12 whole cell lysate.

**Application Notes** recommended for detection of Raf-B of mouse, rat and human origin by WB, IP, IF, FCM and ELISA ; also reactive with additional species, including equine, canine, bovine, porcine and avian:

Additional Information

Form	Liquid
Storage Instructions	For short-term storage, store at 4° C. For long-term storage, aliquot and store at -20°C or below. Avoid multiple freeze-thaw cycles.
Storage Buffer	phosphate buffered saline , pH 7.4, 150mM NaCl, 0.02% sodium azide and 50% glycerol.
Note	The product is for research use only,not for use in diagnostic or therapeutic procedures.

OmnimAbs.com

order@Omnimabs.com  
506 N. GARFIELD AVE #210 ALHAMBRA, CA 91801  
This product is for research use only and is not approved for use in humans or in clinical diagnosis. Primary Antibodies are guaranteed for 1 year from date of receipt