



Catalog: OM160751

Scan to get more validated information



Raf-B Antibody (C-19) TRITC

Catalog: OM160751

☐ 100ul

Product profile

Product name	Raf-B Antibody (C-19) TRITC
Antibody Type	Primary Antibodies
Modification Notes	Several serine/threonine protein kinases have been implicated as intermediates in signal transduction pathways. These include ERK/MAP kinases, ribosomal S6 kinase (Rsk) and Raf-1. Raf-1 is a cytoplasmic protein with intrinsic serine/threonine activity. It is broadly expressed in nearly all cell lines tested to date and is the cellular homolog of v-Raf, the product of the transforming gene of the 3611 strain of murine sarcoma virus. The unregulated kinase activity of the v-Raf protein has been associated with transformation and mitogenesis, while the activity of Raf-1 is normally suppressed by a regulatory N-terminal domain. Raf-A, a second member of the Raf gene family of serine/threonine protein kinases, exhibits substantial homology to Raf-1 within the kinase domain of the two molecules, but less homology elsewhere. Expression of Raf-B is highly restricted, with highest levels in the cerebrum and testis.

Key Feature

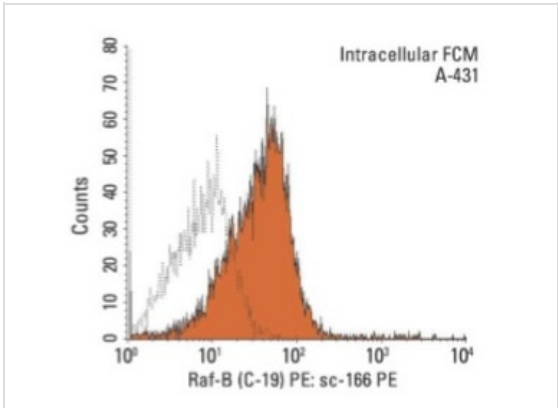
Clonality	Polyclonal
Isotype	IgG
Host Species	Rabbit
Tested Applications	WB ,IP ,IF ,FC ,ELISA
Species Reactivity	Human Mouse Rat
Concentration	1mg/ml
Purification	Affinity purified

Target Information

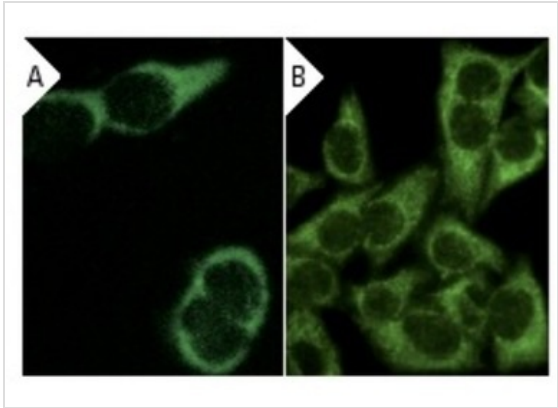
Alternative Names	epitope mapping at the C-terminus of Raf-B of human origin
Tissue Specificity	epitope mapping at the C-terminus of Raf-B of human origin

Database Links

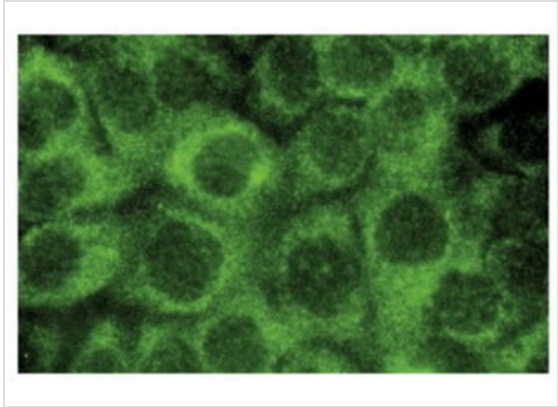
Application



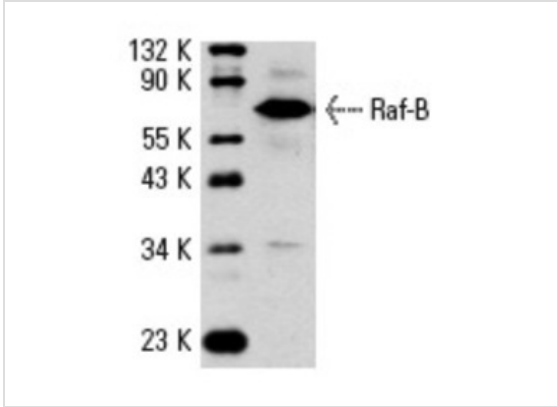
Application
Intracellular FCM analysis of fixed and permeabilized A-431 cells. Black line histogram represents the isotype control, normal rabbit IgG: .



Application
Immunofluorescence staining of methanol-fixed A-431 cells showing cytoplasmic localization using indirect FITC (A) staining and HeLa cells using direct Alexa Fluor 488 (B) staining.



Application
Immunofluorescence staining of methanol-fixed A-431 cells showing cytoplasmic staining.



Application
Western blot analysis of Raf-B expression in PC-12 whole cell lysate.

Application Notes recommended for detection of Raf-B of mouse, rat and human origin by WB, IP, IF, FCM and ELISA ; also reactive with additional species, including equine, canine, bovine, porcine and avian:

Additional Information

Form	Liquid
Storage Instructions	For short-term storage, store at 4° C. For long-term storage, aliquot and store at -20°C or below. Avoid multiple freeze-thaw cycles.
Storage Buffer	phosphate buffered saline , pH 7.4, 150mM NaCl, 0.02% sodium azide and 50% glycerol.
Note	The product is for research use only,not for use in diagnostic or therapeutic procedures.

OmnimAbs.com

order@Omnimabs.com
506 N. GARFIELD AVE #210 ALHAMBRA, CA 91801
This product is for research use only and is not approved for use in humans or in clinical diagnosis. Primary Antibodies are guaranteed for 1 year from date of receipt