



Catalog: OM155063

Scan to get more validated information



Rho B Antibody (119)

Catalog: OM155063

☐ 100ul

Product profile

| | |
|--------------------|--|
| Product name | Rho B Antibody (119) |
| Antibody Type | Primary Antibodies |
| Modification Notes | The Ras p21 family of guanine nucleotide proteins has been widely studied in view of its apparent role in signal transduction pathways and high frequency of mutations in human malignancies. It is now clear, however, that the Ras proteins (H-, K- and N-Ras p21) are members of a much larger superfamily of related proteins. Six members of this family, Rap 1A, Rap 1B, Rap 2, R-Ras, Ral A and Ral B, exhibit approximately 50% amino acid homology to Ras. The six mammalian Rho proteins (Rho A, B, C, G, 7 and 8) are approximately 30% homologous to Ras and are expressed in a wide range of cell types. Both Ras p21 and Rho p21, as well as other members of the Ras superfamily, contain a carboxy-terminal CAAX sequence (C, cysteine; A, aliphatic amino acid; X, any amino acid) which in the case of Ras has been shown to be essential for correct localization and function. |

Key Feature

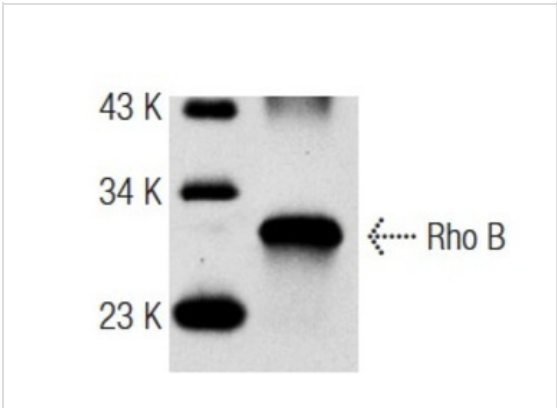
| | |
|---------------------|-----------------------|
| Clonality | Polyclonal |
| Isotype | IgG |
| Host Species | Rabbit |
| Tested Applications | WB ,IP ,IF ,FC ,ELISA |
| Species Reactivity | Human Mouse Rat |
| Concentration | 1mg/ml |
| Purification | Affinity purified |

Target Information

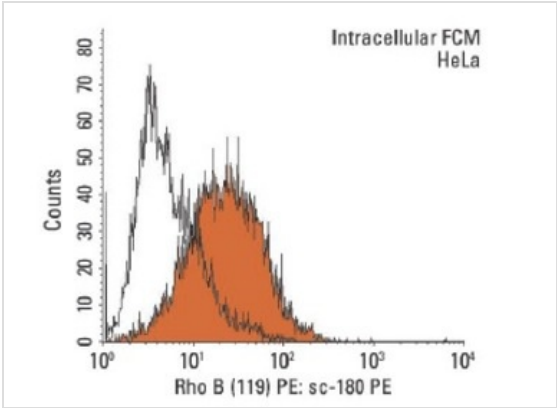
| | |
|--------------------|--|
| Alternative Names | epitope mapping to an internal region of Rho B of human origin |
| Tissue Specificity | epitope mapping to an internal region of Rho B of human origin |

Database Links

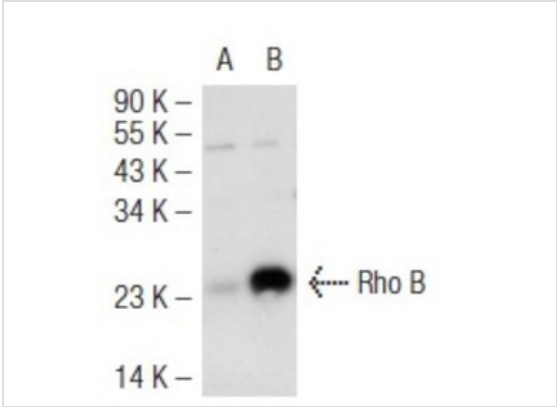
Application



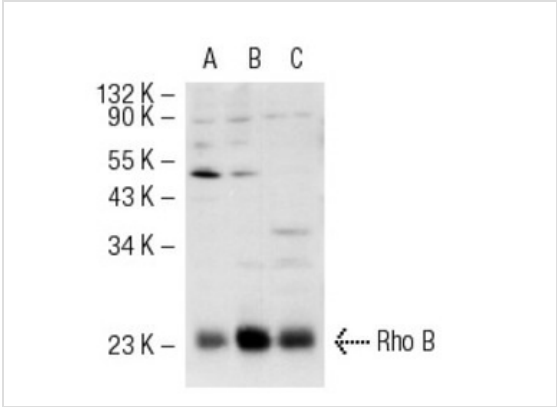
Application
Western blot analysis of rat recombinant Rho B.



Application
Intracellular FCM analysis of fixed and permeabilized HeLa cells. Black line histogram represents the isotype control, normal rabbit IgG: .

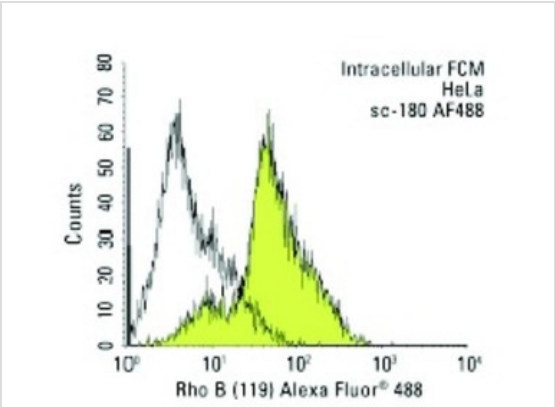
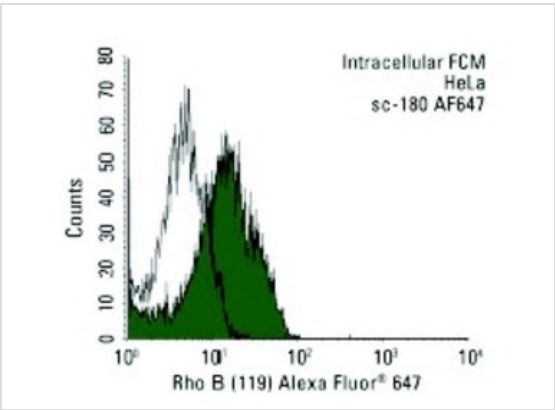


Application
Western blot analysis of Rho B expression in non-transfected: (A) and mouse Rho B transfected: (B) 293T whole cell lysates.



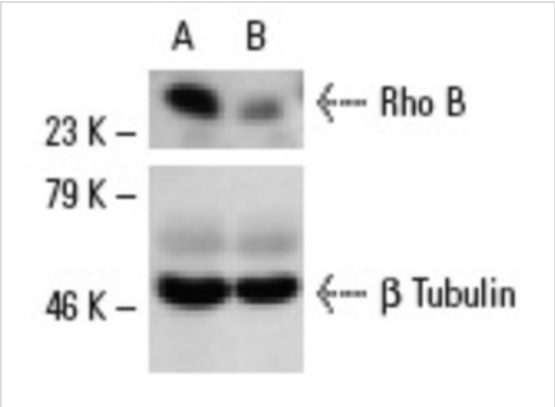
Application
Western blot analysis of Rho B expression in non-transfected 293T: (A), mouse Rho B transfected 293T: (B) and HeLa (C) whole cell lysates.

Application
Intracellular FCM analysis of fixed and permeabilized HeLa cells. Black line histogram represents the isotype control, normal rabbit IgG: .



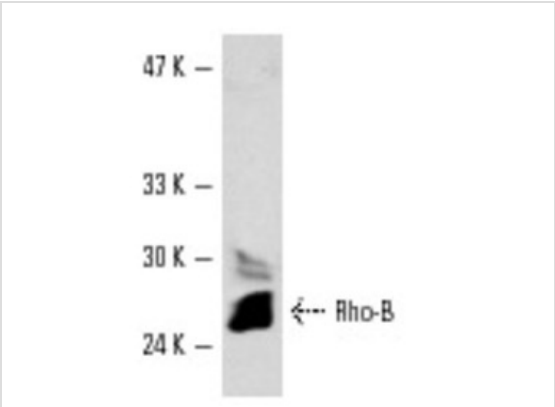
Application

Intracellular FCM analysis of fixed and permeabilized HeLa cells. Black line histogram represents the isotype control, normal rabbit IgG: .



Application

Western blot analysis of Rho B expression in non-transfected control (A) and Rho B siRNA transfected (B) NIH/3T3 cells. Blot probed with Rho B (119): . β Tubulin (D-10); used as specificity and loading control.



Application

Western blot analysis of Rho B expression in lysates from UV-treated HeLa cells.

Application Notes

recommended for detection of Rho B p21 and, to a lesser extent, Rho A of mouse, rat and human origin by WB, IP, IF, FCM and ELISA; also reactive with additional species, including equine, canine, bovine and porcine:

Additional Information

Form

Liquid

| | |
|-----------------------------|---|
| Storage Instructions | For short-term storage, store at 4° C. For long-term storage, aliquot and store at -20°C or below. Avoid multiple freeze-thaw cycles. |
| Storage Buffer | phosphate buffered saline , pH 7.4, 150mM NaCl, 0.02% sodium azide and 50% glycerol. |
| Note | The product is for research use only,not for use in diagnostic or therapeutic procedures. |

OmnimAbs.com

order@Omnimabs.com

506 N. GARFIELD AVE #210 ALHAMBRA, CA 91801

This product is for research use only and is not approved for use in humans or in clinical diagnosis. Primary Antibodies are guaranteed for 1 year from date of receipt

