



Catalog: OM291643

Scan to get more validated information



SMAD1 Antibody

Catalog: OM291643

☐ 100ug

Product profile

Product name	SMAD1 Antibody
Antibody Type	Primary Antibodies
Product description	<p>SMAD1 belongs to the SMAD family. SMAD proteins are signal transducers and transcriptional modulators that mediate multiple signaling pathways. SMAD1 mediates the signals of the bone morphogenetic proteins (BMPs), which are involved in a range of biological activities including cell growth, apoptosis, morphogenesis, development and immune responses. In response to BMP ligands, SMAD1 can be phosphorylated and activated by the BMP receptor kinase. The phosphorylated form of SMAD1 forms a complex with SMAD4, which is important for its function in the transcription regulation. SMAD1 is a target for SMAD-specific E3 ubiquitin ligases, such as SMURF1 and SMURF2, and undergoes ubiquitination and proteasome-mediated degradation. The protein encoded by this gene belongs to the SMAD, a family of proteins similar to the gene products of the Drosophila gene 'mothers against decapentaplegic' (Mad) and the C. elegans gene Sma. SMAD proteins are signal transducers and transcriptional modulators that mediate multiple signaling pathways. This protein mediates the signals of the bone morphogenetic proteins (BMPs), which are involved in a range of biological activities including cell growth, apoptosis, morphogenesis, development and immune responses. In response to BMP ligands, this protein can be phosphorylated and activated by the BMP receptor kinase. The phosphorylated form of this protein forms a complex with SMAD4, which is important for its function in the transcription regulation. This protein is a target for SMAD-specific E3 ubiquitin ligases, such as SMURF1 and SMURF2, and undergoes ubiquitination and proteasome-mediated degradation. Alternatively spliced transcript variants encoding the same protein have been observed. The protein encoded by this gene belongs to the SMAD, a family of proteins similar to the gene products of the Drosophila gene 'mothers against decapentaplegic' (Mad) and the C. elegans gene Sma. SMAD proteins are signal transducers and transcriptional modulators that mediate multiple signaling pathways. This protein mediates the signals of the bone morphogenetic proteins (BMPs), which are involved in a range of biological activities including cell growth, apoptosis, morphogenesis, development and immune responses. In response to BMP ligands, this protein can be phosphorylated and activated by the BMP receptor kinase. The phosphorylated form of this protein forms a complex with SMAD4, which is important for its function in the transcription regulation. This protein is a target for SMAD-specific E3 ubiquitin ligases, such as SMURF1 and SMURF2, and undergoes ubiquitination and proteasome-mediated degradation. Alternatively spliced transcript variants encoding the same protein have been observed. 1) Blount, A.L., (2008) J. Biol. Chem. 283 (11), 7016-7026.</p>
Immunogen	Antibody produced in rabbits immunized with a synthetic peptide corresponding a region of human SMAD

Key Feature

Clonality	Polyclonal
Host Species	Rabbit
Tested Applications	ELISA ,WB
Species Reactivity	Human Mouse
Concentration	1 mg/ml
Purification	Affinity purified

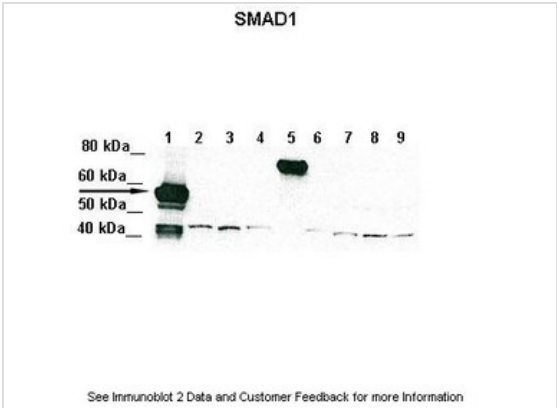
Target Information

Gene Symbol	SMAD1
Alternative Names	SMAD1, BSP1, JV4-1, JV41, MADH1, MADR1, BSP-1
Molecular Weight(MW)	52 kDa

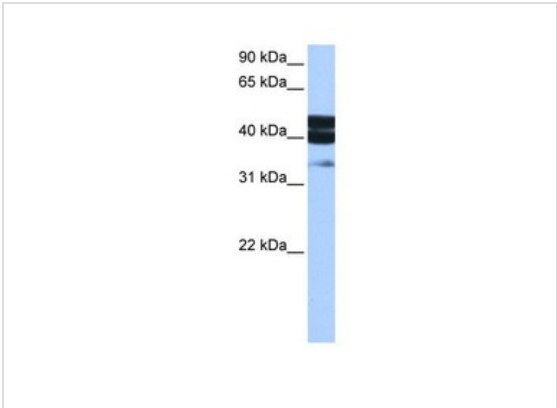
Database Links

Entrez Gene	4086
Protein Accession	NP_005891

Application



Application
Antibody used in WB on r-SMAD1 at: 1:1000 (Lane 1:5ug of transfected 293T lysate (SMAD1) , Lane 2: 5ug of transfected 293T lysate (SMAD2) , Lane 3: 5ug of transfected 293T lysate (SMAD3) , Lane 4: 5ug of transfected 293T lysate (SMAD4) , Lane 5: 5ug of transfected 293T lysate (SMAD5) , Lane 6: 5ug of transfected 293T lysate (SMAD6) , Lane 7: 5ug of transfected 293T lysate (SMAD7) , Lane 8: 5ug of



Application
Antibody used in WB on Human MCF-7 at 0.2-1 ug/ml.

Positive Control	1) Cat. No. 1219 - MCF7 Cell Lysate
Application Notes	SMAD1 antibody can be used for detection of SMAD1 by ELISA at 1:12500. SMAD1 antibody can be used for detection of SMAD1 by western blot at 0.5 µg/mL, and HRP conjugated secondary antibody should be diluted 1:50,000 - 100,000.:

Additional Information

Form	Liquid
Storage Instructions	For short periods of storage (days) store at 4°C. For longer periods of storage, store SMAD1 antibody at -20°C. As with any antibody avoid repeat freeze-thaw cycles.
Storage Buffer	Antibody is lyophilized in PBS buffer with 2% sucrose. Add 50 µL of distilled water. Final antibody concentration is 1 mg/mL.
Note	The product is for research use only,not for use in diagnostic or therapeutic procedures.

OmnimAbs.com

order@Omnimabs.com
 506 N. GARFIELD AVE #210 ALHAMBRA, CA 91801
 This product is for research use only and is not approved for use in humans or in clinical diagnosis. Primary Antibodies are guaranteed for 1 year from date of receipt