



Catalog: OM291680

Scan to get more validated information



SMAD7 Antibody

Catalog: OM291680

☐ 100ug

Product profile

Product name	SMAD7 Antibody
Antibody Type	Primary Antibodies
Product description	Smad7 acts to functionally inactivate RB and de-repress E2F without blocking the activation of TbetaRI and the nuclear translocation of Smad2/3, allowing TGF-beta1 to exert effects in a cancer cell that is resistant to TGF-beta1-mediated growth inhibition.1) Komuro, A., et al., (2004) Oncogene 23 (41), 6914-6923.
Immunogen	Antibody produced in rabbits immunized with a synthetic peptide corresponding a region of human SMAD7.

Key Feature

Clonality	Polyclonal
Host Species	Rabbit
Tested Applications	ELISA ,WB
Species Reactivity	Human
Concentration	1 mg/ml
Purification	Affinity purified

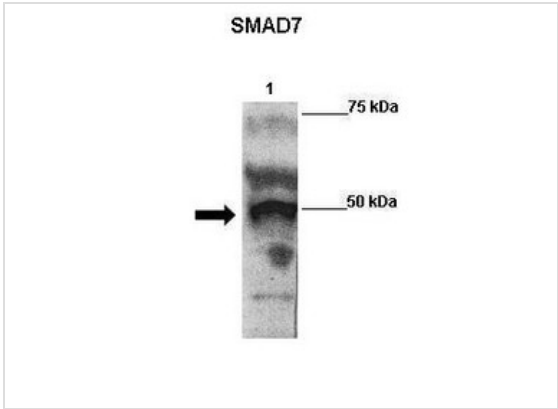
Target Information

Gene Symbol	SMAD7
Alternative Names	SMAD7, CRCS3, MADH7, MADH8
Molecular Weight(MW)	46 kDa

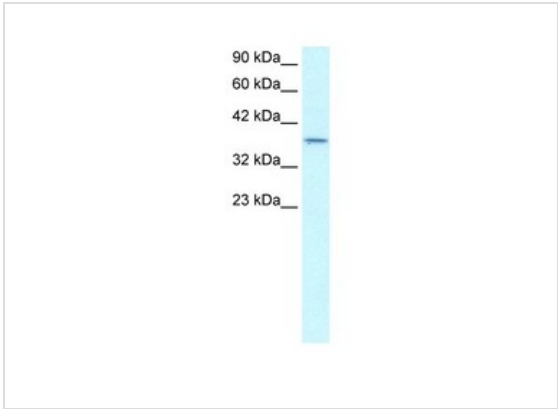
Database Links

Entrez Gene	4092
Protein Accession	NP_005895

Application



Application
Antibody used in WB on Transfected 293 extracts at 1:500.



Application
Antibody used in WB on Human Lung at 0.2-1 ug/ml.

Positive Control	1) Cat. No. 1302 - Human Lung Tissue Lysate
Application Notes	SMAD7 antibody can be used for detection of SMAD7 by ELISA at 1:12500. SMAD7 antibody can be used for detection of SMAD7 by western blot at 1.0 µg/mL, and HRP conjugated secondary antibody should be diluted 1:50,000 - 100,000.:

Additional Information

Form	Liquid
Storage Instructions	For short periods of storage (days) store at 4 °C. For longer periods of storage, store SMAD7 antibody at -20 °C. As with any antibody avoid repeat freeze-thaw cycles.
Storage Buffer	Antibody is lyophilized in PBS buffer with 2% sucrose. Add 50 µL of distilled water. Final antibody concentration is 1 mg/mL.
Note	The product is for research use only, not for use in diagnostic or therapeutic procedures.

OmnimAbs.com

