



Catalog: OM291693

Scan to get more validated information



SMARCA5 Antibody

Catalog: OM291693

☐ 100ug

Product profile

Product name	SMARCA5 Antibody
Antibody Type	Primary Antibodies
Product description	<p>SMARCA5 is a member of the SWI/SNF family of proteins. Members of this family have helicase and ATPase activities and are thought to regulate transcription of certain genes by altering the chromatin structure around those genes. SMARCA5 is a component of the chromatin remodeling and spacing factor RSF, a facilitator of the transcription of class II genes by RNA polymerase II. The protein encoded by this gene is a member of the SWI/SNF family of proteins. Members of this family have helicase and ATPase activities and are thought to regulate transcription of certain genes by altering the chromatin structure around those genes. The protein encoded by this gene is a component of the chromatin remodeling and spacing factor RSF, a facilitator of the transcription of class II genes by RNA polymerase II. The encoded protein is similar in sequence to the Drosophila ISWI chromatin remodeling protein. Publication Note: This RefSeq record includes a subset of the publications that are available for this gene. Please see the Entrez Gene record to access additional publications.1) Olsen, J.V., (2006) Cell 127 (3), 635-648.</p>
Immunogen	Antibody produced in rabbits immunized with a synthetic peptide corresponding a region of human SMARCA5.

Key Feature

Clonality	Polyclonal
Host Species	Rabbit
Tested Applications	ELISA ,WB
Species Reactivity	Human Mouse Rat
Concentration	1 mg/ml
Purification	Affinity purified

Target Information

Gene Symbol	SMARCA5
Alternative Names	SMARCA5, ISWI, SNF2H, WCRF135, hISWI, hSNF2H

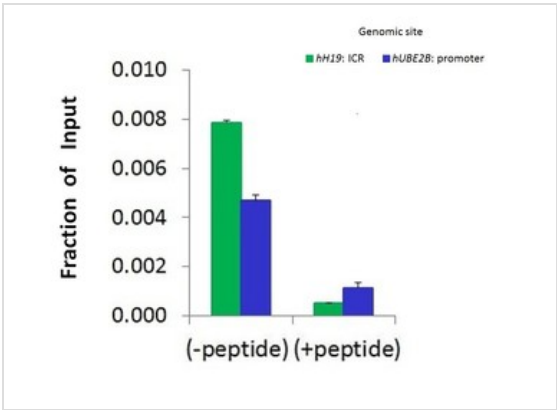
Molecular Weight(MW) 122 kDa

Database Links

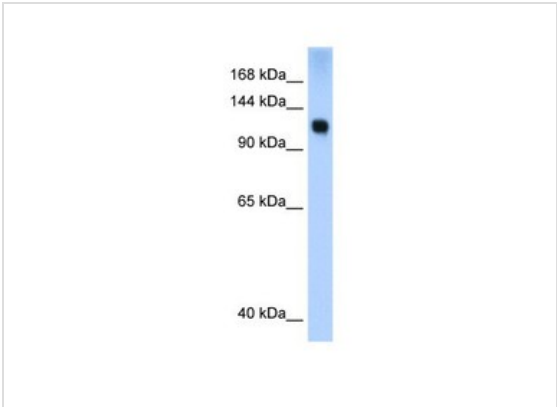
Entrez Gene 8467

Protein Accession NP_003592

Application



Application
Antibody used in CHIP on HCT 116 Cells.



Application
Antibody used in WB on Transfected 293T at 0.2-1 ug/ml.

Positive Control 1) Tranfected 293T Cell Lysate

Application Notes SMARCA5 antibody can be used for detection of SMARCA5 by ELISA at 1:312500. SMARCA5 antibody can be used for detection of SMARCA5 by western blot at 0.25 µg/mL, and HRP conjugated secondary antibody should be diluted 1:50,000 - 100,000.:

Additional Information

Form Liquid

Storage Instructions For short periods of storage (days) store at 4 °C. For longer periods of storage, store SMARCA5 antibody at -20°C. As with any antibody avoid repeat freeze-thaw cycles.

Storage Buffer Antibody is lyophilized in PBS buffer with 2% sucrose. Add 50 µL of distilled water. Final antibody concentration is 1 mg/mL.

Note The product is for research use only, not for use in diagnostic or therapeutic procedures.

OmnimAbs.com

order@Omnimabs.com

506 N. GARFIELD AVE #210 ALHAMBRA, CA 91801

This product is for research use only and is not approved for use in humans or in clinical diagnosis. Primary Antibodies are guaranteed for 1 year from date of receipt
