



Catalog: OM292554

Scan to get more validated information



SUPT3H Antibody

Catalog: OM292554

☐ 100ug

Product profile

Product name	SUPT3H Antibody
Antibody Type	Primary Antibodies
Product description	SUPT3H is a component of the multiprotein SPT-ADA-GCN5 acetyltransferase (SAGA) complex that integrates proteins with transcription coactivator/adaptor functions (ADAs and GCN5), histone acetyltransferase activity (GCN5), and core promoter-selective functions (SPTs) involving interactions with the TATA-binding protein (TBP).1) Yu, J., et al., (1998) Genomics 53 (1), 90-96.
Immunogen	Antibody produced in rabbits immunized with a synthetic peptide corresponding a region of human SUPT3H.

Key Feature

Clonality	Polyclonal
Host Species	Rabbit
Tested Applications	ELISA ,IHC ,WB
Species Reactivity	Dog Human
Concentration	1 mg/ml
Purification	Protein A

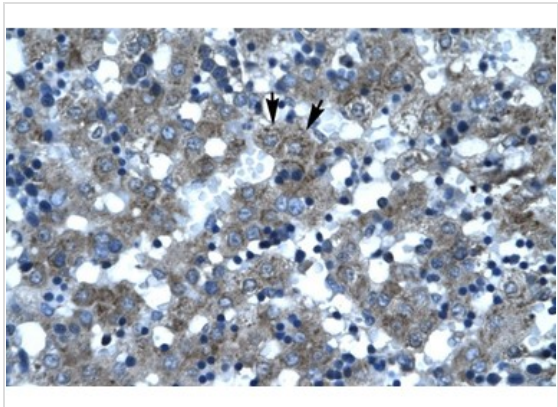
Target Information

Gene Symbol	SUPT3H
Alternative Names	SUPT3H, SPT3, SPT3L
Molecular Weight(MW)	36 kDa, 37 kDa

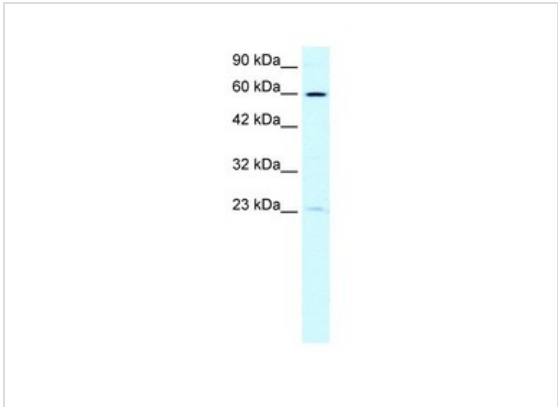
Database Links

Entrez Gene	8464
Protein Accession	NP_003590

Application



Application
Antibody used in IHC on Human Liver at 4.0-8.0 ug/ml.



Application
Antibody used in WB on Human HepG2 at 0.4 ug/ml.

Positive Control	1) Cat. No. 1211 - HepG2 Cell Lysate
Application Notes	SUPT3H antibody can be used for detection of SUPT3H by ELISA at 1:1562500. SUPT3H antibody can be used for detection of SUPT3H by western blot at 0.4 µg/mL, and HRP conjugated secondary antibody should be diluted 1:50,000 - 100,000.:

Additional Information

Form	Liquid
Storage Instructions	For short periods of storage (days) store at 4 °C. For longer periods of storage, store SUPT3H antibody at -20 °C. As with any antibody avoid repeat freeze-thaw cycles.
Storage Buffer	IgG in phosphate buffered saline , pH 7.4, 150mM NaCl, 0.02% sodium azide and 50% glycerol.Store at -20 °C.Stable for 12 months from date of receipt
Note	The product is for research use only,not for use in diagnostic or therapeutic procedures.

OmnimAbs.com

