



Catalog: OM296306

Scan to get more validated information



SignalStain® Boost IHC Detection Reagent (HRP, Rabbit)

Catalog: OM296306

☐ 100ug

Product profile

| | |
|---------------------|--|
| Product name | SignalStain® Boost IHC Detection Reagent (HRP, Rabbit) |
| Antibody Type | Secondary Antibodies |
| Product description | SignalStain® Boost IHC Detection Reagent (HRP, Rabbit) is a ready-to-use solution intended for use in immunohistochemical assays to detect rabbit primary antibodies. SignalStain® Boost IHC Detection Reagent (HRP, Rabbit) is a highly sensitive, one-step, polymer-based detection reagent that is specific for rabbit IgG. It can be used to visualize targets in both paraffin-embedded and frozen tissue sections and it is compatible with all peroxidase-based substrates. |

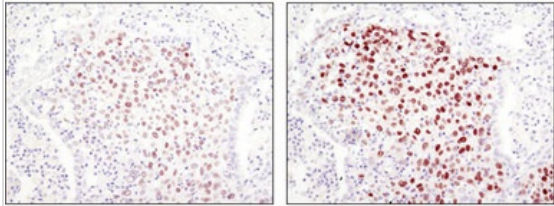
Key Feature

| | |
|---------------------|---------------------------|
| Clonality | Monoclonal |
| Tested Applications | WB ,IP ,IHC ,IF ,FC ,ChIP |
| Species Reactivity | Human |
| Concentration | 1 mg/ml |
| Purification | |

Target Information

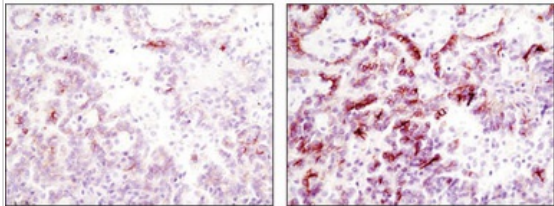
| | |
|--------------------|---|
| Tissue Specificity | SignalStain® Boost IHC Detection Reagent (HRP, Rabbit) can be used to detect rabbit primary antibodies in immunohistochemical assays. Some antibodies may require titration when used with this highly sensitive reagent. |
|--------------------|---|

Application



Application

Immunohistochemical analysis of paraffin-embedded human lung squamous cell carcinoma using Sox2 (D6D9) XP® Rabbit mAb with biotin-based detection (left) or SignalStain® Boost IHC Detection Reagent (HRP, Rabbit) (right).



Application

Immunohistochemical analysis of paraffin-embedded human papillary renal cell carcinoma using Phospho-Met (Tyr1234/1235) (D26) XP® Rabbit mAb with biotin-based detection (left) or SignalStain® Boost IHC Detection Reagent (HRP, Rabbit) (right).

Additional Information

Storage Instructions

Equilibrate SignalStain® Boost IHC Detection Reagent (HRP, Rabbit) to room temperature prior to applying to the slides. Cover sections with 1-3 drops (40-120 µl), as needed, and incubate in a humidified chamber for 30 minutes at room temperature. Wash slides and develop with any peroxidase-based substrate.

Storage: SignalStain® Boost IHC Detection Reagent (HRP, Rabbit) should be stored at 4°C and is stable for 12 months.

Storage Buffer

phosphate buffered saline , pH 7.4, 150mM NaCl, 0.02% sodium azide and 50% glycerol.

Note

The product is for research use only, not for use in diagnostic or therapeutic procedures.

OmnimAbs.com

order@Omnimabs.com

506 N. GARFIELD AVE #210 ALHAMBRA, CA 91801

This product is for research use only and is not approved for use in humans or in clinical diagnosis. Primary Antibodies are guaranteed for 1 year from date of receipt