



Catalog: OM152811

Scan to get more validated information



# Syk Antibody (N-19)

Catalog: OM152811

☐ 100ul

## Product profile

Product name	Syk Antibody (N-19)
Antibody Type	Primary Antibodies
Modification Notes	Syk (spleen tyrosine kinase) is a 635 amino acid protein that contains one protein kinase domain and two SH2 domains. One of several members of the protein kinase superfamily, Syk functions as a positive effector of B cell antigen receptor (CD79)-stimulated responses, coupling CD79 with the movement of one calcium ion through one of two phospho-regulated pathways. Specifically, calcium ions travel through either a phosphoinositide 3-kinase (PI 3-kinase)-dependent pathway when Syk is not phosphorylated, or through a phospholipase C (PLC) $\text{C}\alpha$ -dependent pathway when human Syk is phosphorylated on Tyr 348 and Tyr 352. Via its ability to influence CD79 activity and to control the movement of calcium through the cell, Syk plays an important role in a variety of cellular responses, including differentiation, phagocytosis, proliferation and B cell development. Syk expression is upregulated in T cell lymphoma, suggesting a possible role for Syk in tumorigenesis. Two isoforms of Syk, designated short and long, exist due to alternative splicing events.

## Key Feature

Clonality	Polyclonal
Isotype	IgG
Host Species	Rabbit
Tested Applications	WB ,IP ,IF ,IHC ,FC ,ELISA
Species Reactivity	Human Mouse Rat
Concentration	1mg/ml
Purification	Affinity purified

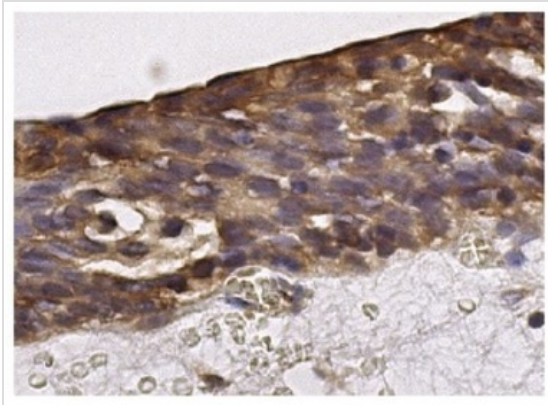
## Target Information

Alternative Names	epitope mapping at the N-terminus of Syk of human origin
Tissue Specificity	epitope mapping at the N-terminus of Syk of human origin

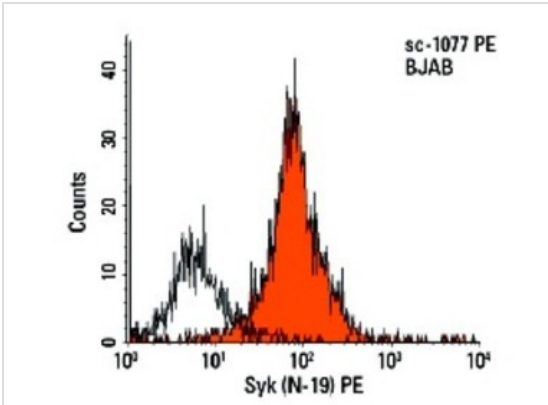
Database Links

Entrez Gene 6850

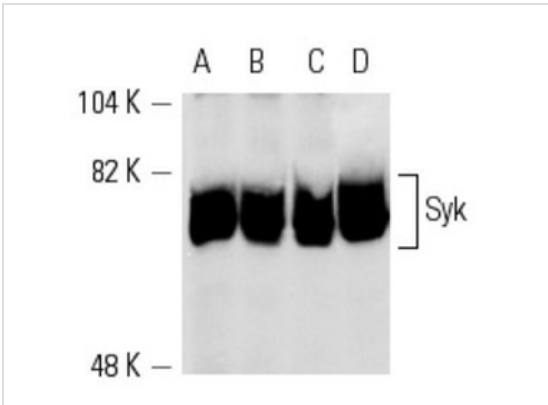
Application



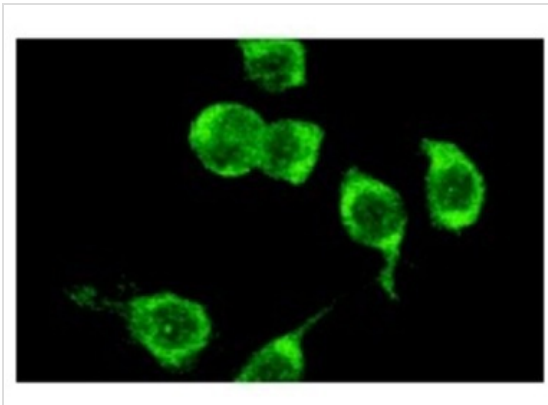
**Application**  
Immunoperoxidase staining of formalin fixed, paraffin-embedded human urinary bladder tissue showing cytoplasmic staining of squamous epithelial cells.



**Application**  
Intracellular FCM analysis of fixed and permeabilized BJAB cells. Black line histogram represents the isotype control, normal rabbit IgG: .



**Application**  
Western blot analysis of Syk expression in BJAB (A), Ramos (B), NAMALWA (C) and RAW 264.7 (D) whole cell lysates.



**Application**  
Immunofluorescence staining of methanol-fixed RAW 264.7 cells showing cytoplasmic staining.

ELISA; also reactive with additional species, including equine, canine, bovine and porcine:

## Additional Information

---

<b>Form</b>	Liquid
<b>Storage Instructions</b>	For short-term storage, store at 4° C. For long-term storage, aliquot and store at -20°C or below. Avoid multiple freeze-thaw cycles.
<b>Storage Buffer</b>	phosphate buffered saline , pH 7.4, 150mM NaCl, 0.02% sodium azide and 50% glycerol.
<b>Note</b>	The product is for research use only,not for use in diagnostic or therapeutic procedures.

# OmnimAbs.com

---

order@Omnimabs.com

506 N. GARFIELD AVE #210 ALHAMBRA, CA 91801

This product is for research use only and is not approved for use in humans or in clinical diagnosis. Primary Antibodies are guaranteed for 1 year from date of receipt

---