



Catalog: OM292918

Scan to get more validated information



TBX10 Antibody

Catalog: OM292918

☐ 100ug

Product profile

Product name	TBX10 Antibody
Antibody Type	Primary Antibodies
Product description	TBX10, a member of the Tbx1-subfamily of conserved developmental genes, is located at human chromosome 11q13 and proximal mouse chromosome 19.1) Bush, J.O., et al., (2003) Gene Expr. Patterns 3 (4), 533-538.
Immunogen	Antibody produced in rabbits immunized with a synthetic peptide corresponding a region of human TBX10.

Key Feature

Clonality	Polyclonal
Host Species	Rabbit
Tested Applications	ELISA ,WB
Species Reactivity	Human
Concentration	1 mg/ml
Purification	Affinity purified

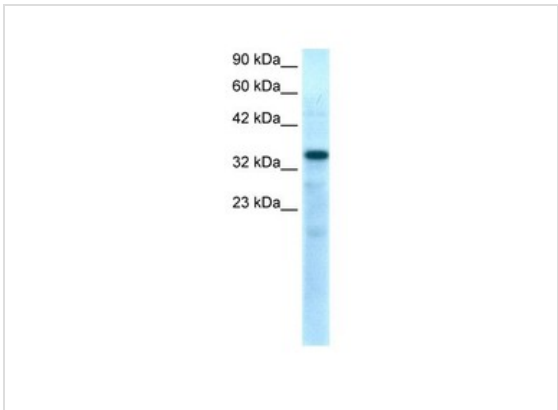
Target Information

Gene Symbol	TBX10
Alternative Names	TBX10, TBX7, TBX13
Molecular Weight(MW)	42 kDa

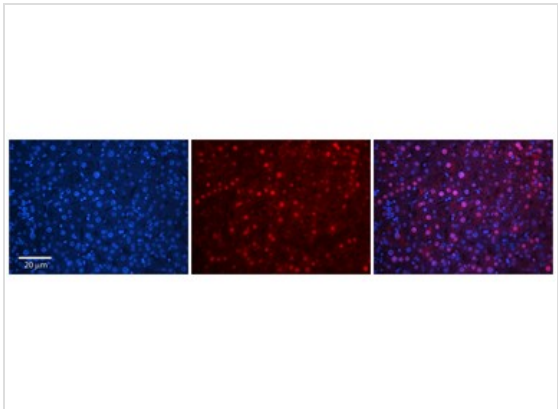
Database Links

Entrez Gene	347853
Protein Accession	NP_005986

Application



Application
Antibody used in WB on Human Muscle lysate at 0.2-1 ug/ml.



Application
Antibody used in IHC on Human Adult Liver at 1:100.

Positive Control	1) Cat. No. XBL-10413 - Fetal Skeletal Muscle Tissue Lysate
Application Notes	TBX10 antibody can be used for detection of TBX10 by ELISA at 1:62500. TBX10 antibody can be used for detection of TBX10 by western blot at 0.5 µg/mL, and HRP conjugated secondary antibody should be diluted 1:50,000 - 100,000.:

Additional Information

Form	Liquid
Storage Instructions	For short periods of storage (days) store at 4 °C. For longer periods of storage, store TBX10 antibody at -20 °C. As with any antibody avoid repeat freeze-thaw cycles.
Storage Buffer	Antibody is lyophilized in PBS buffer with 2% sucrose. Add 50 µL of distilled water. Final antibody concentration is 1 mg/mL.
Note	The product is for research use only, not for use in diagnostic or therapeutic procedures.

OmnimAbs.com