



Catalog: OM293050

Scan to get more validated information



TEAD2 Antibody

Catalog: OM293050

☐ 100ug

Product profile

Product name	TEAD2 Antibody
Antibody Type	Primary Antibodies
Product description	TEAD2 contains 1 TEA DNA-binding domain. TEAD2 is a putative transcription factor that binds to the S PH and GT-IIIC enhancers (5'-GTGGAATGT-3'). It may be involved in the gene regulation of neural development.1) Jacquemin, P., (1999) Genomics 55 (1), 127-129.
Immunogen	Antibody produced in rabbits immunized with a synthetic peptide corresponding a region of human TEAD 2.

Key Feature

Clonality	Polyclonal
Host Species	Rabbit
Tested Applications	ELISA ,WB
Species Reactivity	Human
Concentration	1 mg/ml
Purification	Affinity purified

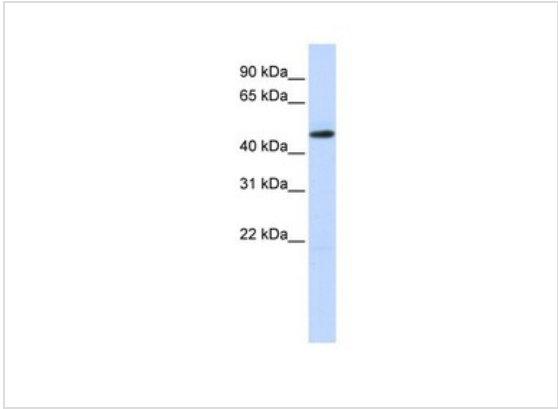
Target Information

Gene Symbol	TEAD2
Alternative Names	TEAD2, ETF, TEF-4, TEF4, TEAD-2
Molecular Weight(MW)	49 kDa

Database Links

Entrez Gene	8463
Protein Accession	NP_003589

Application



Application
Antibody used in WB on Human Brain at 0.2-1 ug/ml.

Positive Control	1) Cat. No. XBL-10123 - Fetal Brain Tissue Lysate
Application Notes	TEAD2 antibody can be used for detection of TEAD2 by ELISA at 1:12500. TEAD2 antibody can be used for detection of TEAD2 by western blot at 1 µg/mL, and HRP conjugated secondary antibody should be diluted 1:50,000 - 100,000.:
Additional Information	
Form	Liquid
Storage Instructions	For short periods of storage (days) store at 4 °C. For longer periods of storage, store TEAD2 antibody at -20 °C. As with any antibody avoid repeat freeze-thaw cycles.
Storage Buffer	Antibody is lyophilized in PBS buffer with 2% sucrose. Add 50 µL of distilled water. Final antibody concentration is 1 mg/mL.
Note	The product is for research use only, not for use in diagnostic or therapeutic procedures.

OmnimAbs.com

order@Omnimabs.com
506 N. GARFIELD AVE #210 ALHAMBRA, CA 91801
This product is for research use only and is not approved for use in humans or in clinical diagnosis. Primary Antibodies are guaranteed for 1 year from date of receipt