



Catalog: OM293052

Scan to get more validated information



TEAD2 Antibody

Catalog: OM293052

☐ 100ug

Product profile

Product name	TEAD2 Antibody
Antibody Type	Primary Antibodies
Product description	Transcription factor which plays a key role in the Hippo signaling pathway, a pathway involved in organ size control and tumor suppression by restricting proliferation and promoting apoptosis. The core of this pathway is composed of a kinase cascade wherein MST1/MST2, in complex with its regulatory protein SAV1, phosphorylates and activates LATS1/2 in complex with its regulatory protein MOB1, which in turn phosphorylates and inactivates YAP1 oncoprotein and WWTR1/TAZ. Acts by mediating gene expression of YAP1 and WWTR1/TAZ, thereby regulating cell proliferation, migration and epithelial mesenchymal transition (EMT) induction. Binds to the SPH and GT-IIIC 'enhancers' (5'-GTGGAATGT-3'). May be involved in the gene regulation of neural development. Binds to the M-CAT motif.1) Bailey, S.D., et al. Diabetes Care 33(10):2250-2253(2010)
Immunogen	This TEAD2 antibody is generated from rabbits immunized with a KLH conjugated synthetic peptide between 267-295 amino acids from the Central region of human TEAD2.

Key Feature

Clonality	Polyclonal
Isotype	Ig
Host Species	Rabbit
Tested Applications	WB
Species Reactivity	Human Mouse
Concentration	1 mg/ml
Purification	Affinity purified

Target Information

Gene Symbol	TEAD2
Alternative Names	Transcriptional enhancer factor TEF-4, TEA domain family member 2, TEAD-2, TEAD2, TEF4

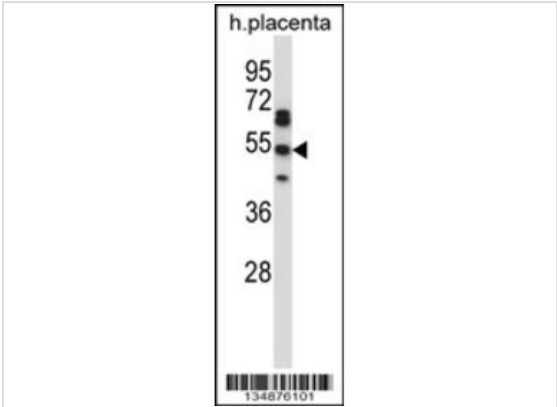
Molecular Weight(MW) 49 kDa

Database Links

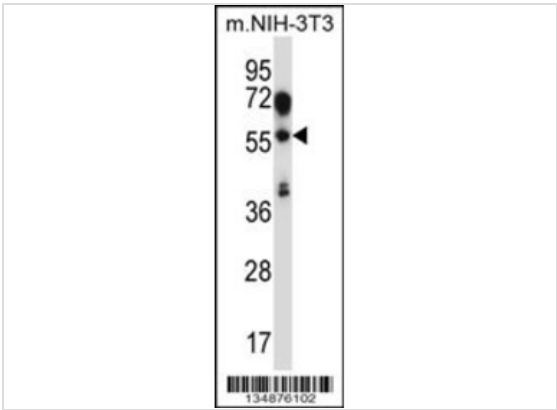
Entrez Gene 8463

Protein Accession Q15562

Application



Application
Western blot analysis in human placenta tissue lysates (35ug/lane).



Application
Western blot analysis in mouse NIH-3T3 cell line lysates (35ug/lane).

Application Notes For WB starting dilution is: 1:1000:

Additional Information

Form Liquid

Storage Instructions Store at 4°C for three months and -20°C, stable for up to one year. As with all antibodies care should be taken to avoid repeated freeze thaw cycles. Antibodies should not be exposed to prolonged high temperatures.

Storage Buffer Supplied in PBS with 0.09% (W/V) sodium azide.

Note The product is for research use only,not for use in diagnostic or therapeutic procedures.

OmnimAbs.com

order@Omnimabs.com

506 N. GARFIELD AVE #210 ALHAMBRA, CA 91801

This product is for research use only and is not approved for use in humans or in clinical diagnosis. Primary Antibodies are guaranteed for 1 year from date of receipt

