



Catalog: OM293103

Scan to get more validated information



TERF2 Antibody

Catalog: OM293103

☐ 100ug

Product profile

| | |
|---------------------|---|
| Product name | TERF2 Antibody |
| Antibody Type | Primary Antibodies |
| Product description | <p>The telomeric repeat binding factor family (TERF1 and TERF2) plays a key role in cellular immortalization and cellular senescence (1). TERF2, as a component of the telomere nucleoprotein complex, is present at telomeres in metaphase of the cell cycle (2). TERF2 is a second negative regulator of telomere length and binds as a dimer to TTAGGG repeats at ends of chromosomes (telomeres), where it blocks inappropriate activation of the ATM/p53 pathway (2,3). TERF1 negatively regulates telomere elongation, while TERF2 protects the chromosome ends by inhibiting end-to-end fusions. Down-regulation of TRF expression in tumor cells may contribute to cell immortalization and malignant progression (4,5).1 Broccoli D, Smogorzewska A, Chong L, et al. Human telomeres contain two distinct Myb-related proteins, TRF1 and TRF2. Nat. Genet. 1997; 17:231-5.</p> |
| Immunogen | <p>TERF2 antibody was raised against a 17 amino acid peptide near the amino terminus of human TERF2. The immunogen is located within the first 50 amino acids of TERF2.</p> |

Key Feature

| | |
|---------------------|-------------------|
| Clonality | Polyclonal |
| Isotype | IgG |
| Host Species | Rabbit |
| Tested Applications | ELISA ,IHC-P ,WB |
| Species Reactivity | Human |
| Concentration | 1 mg/ml |
| Purification | Affinity purified |

Target Information

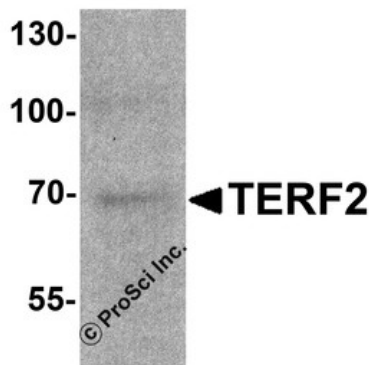
| | |
|-------------------|--|
| Gene Symbol | TERF2 |
| Alternative Names | TERF2 Antibody: TRF2, TRBF2, TRF2, Telomeric repeat-binding factor 2, TTAGGG repeat-binding factor 2 |

| | |
|------------------------------|--|
| Molecular Weight(MW) | Predicted: 60 kDa Observed: 69 kDa |
| Sequence Similarities | 2) Cat. No. 10-401 - Human Kidney Tissue Slide |
| Tissue Specificity | TERF2 antibody is human specific. |

Database Links

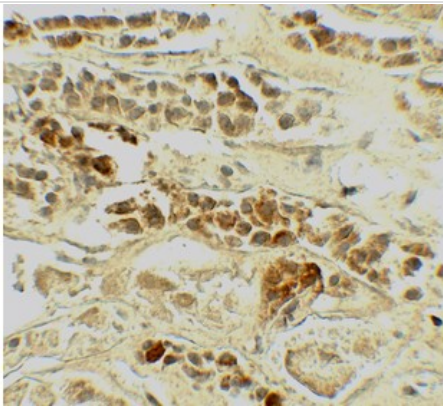
| | |
|--------------------------|-----------|
| Entrez Gene | 7014 |
| Protein Accession | NP_005643 |

Application



Application

Western blot analysis of TERF2 in 293 cell lysate with TERF2 antibody at 1 µg/ml.



Application

Immunohistochemistry of TERF2 in human kidney tissue with TERF2 antibody at 5 µg/mL.

| | |
|--------------------------|--|
| Positive Control | 1) Cat. No. 1210 - HEK293 Cell Lysate |
| Application Notes | TERF2 antibody can be used for detection of TERF2 by Western blot at 1 - 2 µg/ml. Antibody can also be used for Immunohistochemistry at 5 µg/mL.: |

Additional Information

| | |
|-----------------------------|--|
| Form | Liquid |
| Storage Instructions | TERF2 antibody can be stored at 4°C for three months and -20°C, stable for up to one year. |
| Storage Buffer | TERF2 Antibody is supplied in PBS containing 0.02% sodium azide. |
| Note | The product is for research use only, not for use in diagnostic or therapeutic procedures. |

OmnimAbs.com

order@Omnimabs.com

506 N. GARFIELD AVE #210 ALHAMBRA, CA 91801

This product is for research use only and is not approved for use in humans or in clinical diagnosis. Primary Antibodies are guaranteed for 1 year from date of receipt

