



Catalog: OM154401

Scan to get more validated information



TRAF1 Antibody (G-20) PE

Catalog: OM154401

☐ 100ul

Product profile

Product name	TRAF1 Antibody (G-20) PE
Antibody Type	Primary Antibodies
Modification Notes	Tumor necrosis factor (TNF)-activated cell signaling is mediated primarily through the TNF receptor 1 (TNF-R1) and, to a lesser extent, TNF-R2. Both TNF receptors are members of the expanding TNF receptor superfamily which includes the FAS antigen and CD40. Potential insight into an understanding of TNF receptor-mediated signaling was provided by the identification of two related proteins, TRAF1 and TRAF2 (or TNF receptor-associated factors 1 and 2, respectively). Both function to form heterodimeric complexes and associate with the cytoplasmic domain of TNF-R2. A third member of this protein family, alternatively designated CD40 bp, CRAF1, LAP1 or TRAF3, has been identified and shown to associate with the cytoplasmic domain of CD40. The similarity between a specific region of TRAF3 with regions of TRAF1 and TRAF2 define a "TRAF-C" domain that is necessary and sufficient for CD40 binding and homodimerization.

Key Feature

Clonality	Polyclonal
Isotype	IgG
Host Species	Rabbit
Tested Applications	WB ,IP ,IF ,FC ,ELISA
Species Reactivity	Human Mouse Rat
Concentration	1mg/ml
Purification	Affinity purified

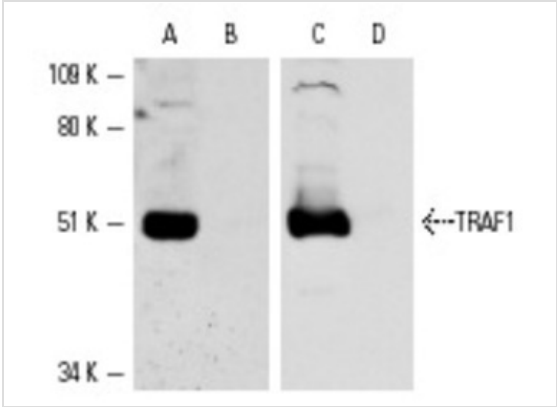
Target Information

Alternative Names	epitope mapping at the N-terminus of TRAF1 of human origin
Tissue Specificity	epitope mapping at the N-terminus of TRAF1 of human origin

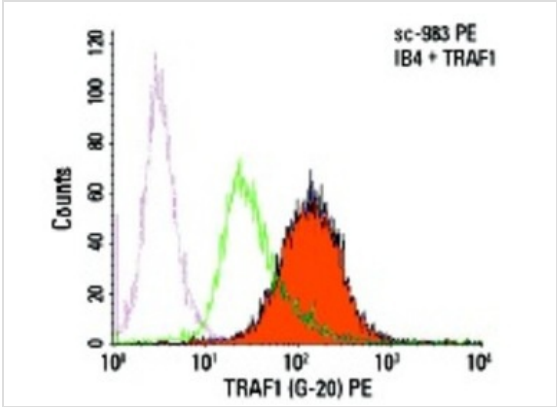
Database Links

Entrez Gene	7185
-------------	------

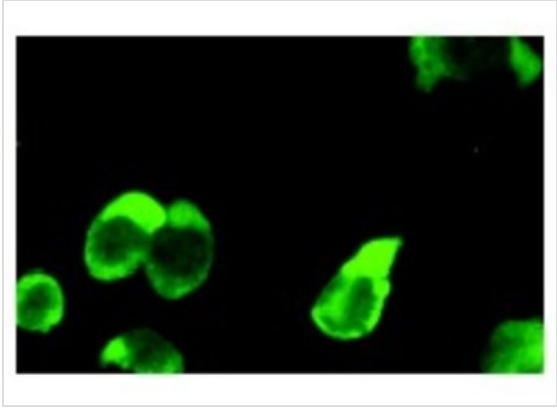
Application



Application
Antibodies tested include TRAF1 (H-132): (A,B) and TRAF1 (G-20): (C,D).



Application
Intracellular FCM analysis of fixed and permeabilized control (green line histogram) and TRAF1 transfected (solid orange histogram) IB4 cells. Dotted pink histogram represents the isotype control, normal rabbit IgG: .



Application
Immunofluorescence staining of methanol-fixed IB4-E25.22 cells showing cytoplasmic staining.

Application Notes	recommended for detection of TRAF1 of human origin by WB, IP, IF, FCM and ELISA; also reactive with additional species, including equine, canine, bovine and porcine:
-------------------	---

Additional Information

Form	Liquid
Storage Instructions	For short-term storage, store at 4° C. For long-term storage, aliquot and store at -20°C or below. Avoid multiple freeze-thaw cycles.
Storage Buffer	phosphate buffered saline , pH 7.4, 150mM NaCl, 0.02% sodium azide and 50% glycerol.

Note

The product is for research use only,not for use in diagnostic or therapeutic procedures.

OmnimAbs.com

order@Omnimabs.com

506 N. GARFIELD AVE #210 ALHAMBRA, CA 91801

This product is for research use only and is not approved for use in humans or in clinical diagnosis. Primary Antibodies are guaranteed for 1 year from date of receipt
