



Catalog: OM293944

Scan to get more validated information



TRAP1 Antibody

Catalog: OM293944

☐ 100ug

Product profile

Product name	TRAP1 Antibody
Antibody Type	Primary Antibodies
Product description	Suppression of the expression of TRAP1 in mitochondria might play an important role in the induction of apoptosis caused via formation of ROS.1) Voloboueva, LA., (2008) J. Cereb. Blood Flow Metab. 28 (5), 1009-1016.
Immunogen	Antibody produced in rabbits immunized with a synthetic peptide corresponding a region of human TRAP 1.

Key Feature

Clonality	Polyclonal
Host Species	Rabbit
Tested Applications	ELISA ,WB
Species Reactivity	Human
Concentration	1 mg/ml
Purification	Protein A

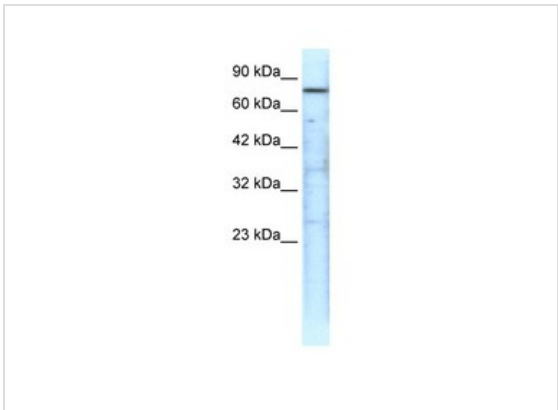
Target Information

Gene Symbol	TRAP1
Alternative Names	TRAP1, HSP75, HSP90L, HSP 75, TRAP-1
Molecular Weight(MW)	80 kDa

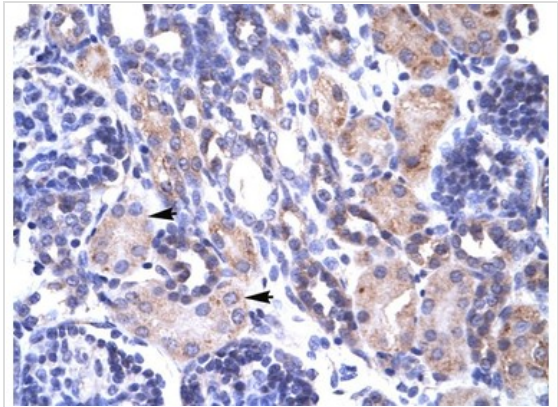
Database Links

Entrez Gene	10131
Protein Accession	NP_057376

Application



Application
Antibody used in WB on Human HepG2 at 0.5 ug/ml.



Application
Antibody used in IHC on Human kidney.

Positive Control	1) 721_B Cell Lysate
Application Notes	TRAP1 antibody can be used for detection of TRAP1 by ELISA at 1:312500. TRAP1 antibody can be used for detection of TRAP1 by western blot at 1 µg/mL, and HRP conjugated secondary antibody should be diluted 1:50,000 - 100,000.:

Additional Information

Form	Liquid
Storage Instructions	For short periods of storage (days) store at 4 °C. For longer periods of storage, store TRAP1 antibody at -20 °C. As with any antibody avoid repeat freeze-thaw cycles.
Storage Buffer	IgG in phosphate buffered saline , pH 7.4, 150mM NaCl, 0.02% sodium azide and 50% glycerol.Store at -20 °C.Stable for 12 months from date of receipt
Note	The product is for research use only,not for use in diagnostic or therapeutic procedures.

OmnimAbs.com