



Catalog: OM638953

Scan to get more validated information



# UBE1C

Catalog: OM638953

☐ 100 µl

## Product profile

Product name	UBE1C
Antibody Type	Primary Antibodies
Product description	Ubiquitin is an abundant, highly conserved protein found in all eukaryotic cells either free or covalently attached to cellular proteins. The primary function of ubiquitin in mammalian systems is to clear abnormal, foreign and improperly folded proteins by targeting them for proteasome degradation. UBA3 (ubiquitin-like modifier activating enzyme 3), also known as NEDD8-activating enzyme E1 catalytic subunit or UBE1C (ubiquitin-activating enzyme E1C), is a 463 amino acid protein belonging to the ubiquitin-activating E1 family and UBA3 subfamily. Ubiquitously expressed, UBA3 acts as an activator to NEDD8, a ubiquitin-like protein, thus regulating cell division, signaling and embryogenesis. UBA3 exists as two isoforms due to alternative splicing events.
Immunogen	Recombinant protein

## Key Feature

Clonality	Polyclonal
Isotype	IgG
Host Species	Rabbit
Tested Applications	WB ,ICC ,IHC ,FC
Species Reactivity	Human Mouse Rat
Concentration	1 mg/mL.

## Target Information

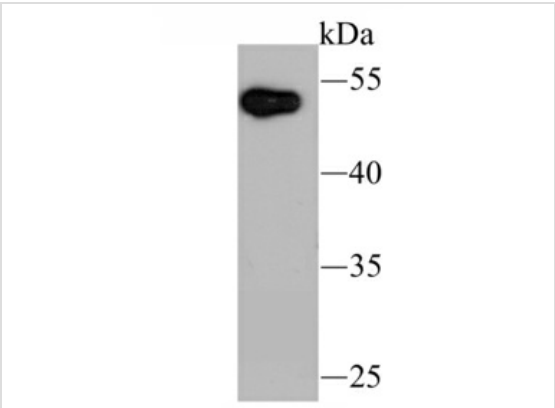
Alternative Names	DKFZp566J164 antibody EC 6.3.2. antibody hUba3 antibody MGC22384 antibody NEDD8 activating enzyme E1 catalytic subunit antibody NEDD8 activating enzyme E1C antibody Nedd8 activating enzyme hUba3 antibody NEDD8-activating enzyme E1 catalytic subunit antibody NEDD8-activating enzyme E1C antibody uba3 antibody UBA3 ubiquitin activating enzyme E1 homolog antibody UBA3_HUMAN antibody UBE1C antibody Ubiquitin activating enzyme 3 antibody Ubiquitin activating enzyme E1C antibody Ubiquitin-activating enzyme 3 antibody Ubiquitin-activating enzyme E1C antibody Ubiquitin-like modifier-activating e
-------------------	---

	nzyme 3 antibody
<b>Molecular Weight(MW)</b>	52 kDa
<b>Cellular Localization</b>	Nucleus. Cytoplasm.

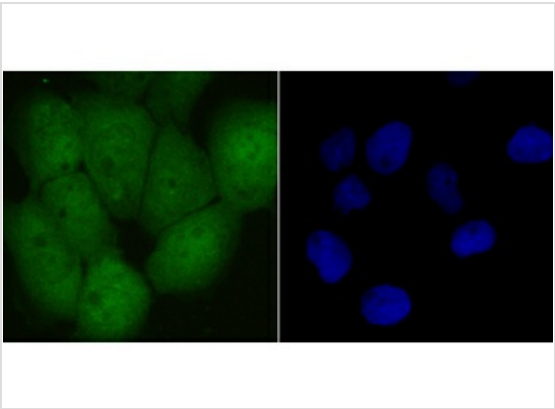
## Database Links

<b>SwissProt ID</b>	Q8TBC4
	Q8C878
	Q99MI7

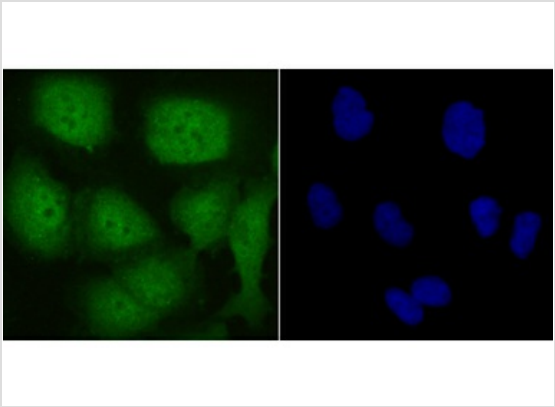
## Application



**Application**  
 Fig1: Western blot analysis of UBE1C on human liver tissue lysate using anti-UBE1C antibody at 1/200 dilution.

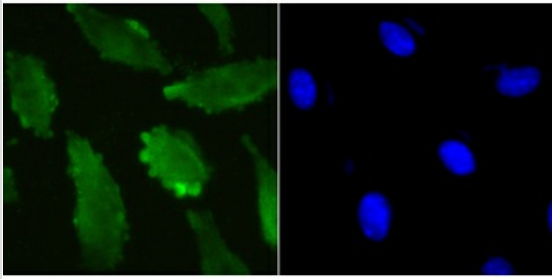


**Application**  
 Fig2: ICC staining UBE1C in A431 cells (green). The nuclear counter stain is DAPI (blue). Cells were fixed in paraformaldehyde, permeabilised with 0.25% Triton X100/PBS.



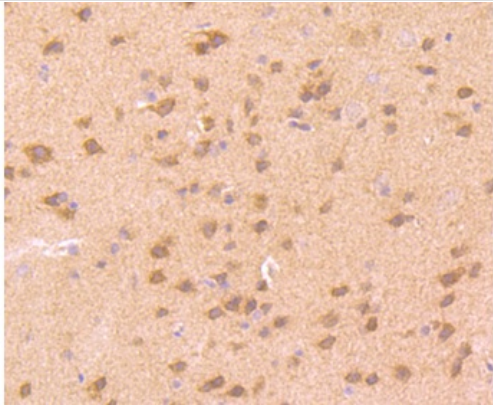
**Application**  
 Fig3: ICC staining UBE1C in HUVEC cells (green). The nuclear counter stain is DAPI (blue). Cells were fixed in paraformaldehyde, permeabilised with 0.25% Triton X100/PBS.

**Application**  
 Fig4: ICC staining UBE1C in SH-SY5Y cells (green). The nuclear counter stain is DAPI (blue). Cells were fixed in paraformaldehyde, permeabilised with 0.25% Triton X100/PBS.



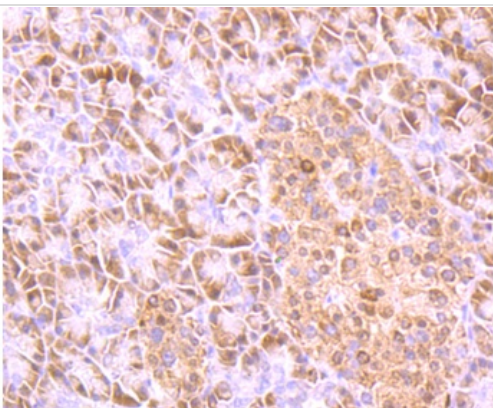
#### Application

Fig5: Immunohistochemical analysis of paraffin-embedded rat brain tissue using anti-UBE1C antibody. Counter stained with hematoxylin.



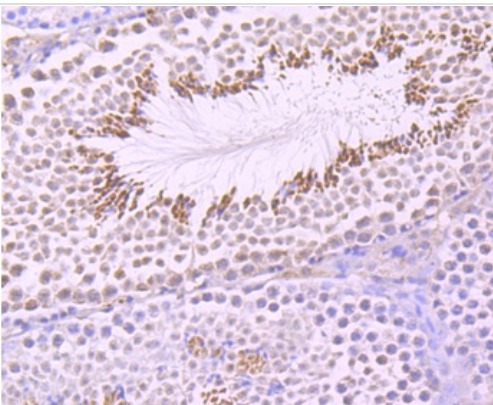
#### Application

Fig6: Immunohistochemical analysis of paraffin-embedded human pancreas tissue using anti-UBE1C antibody. Counter stained with hematoxylin.



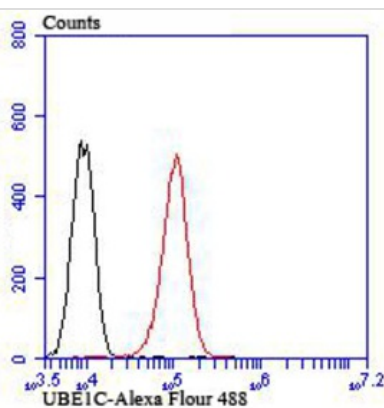
#### Application

Fig7: Immunohistochemical analysis of paraffin-embedded mouse testis tissue using anti-UBE1C antibody. Counter stained with hematoxylin.



#### Application

Fig8: Flow cytometric analysis of HUVEC cells with UBE1C antibody at 1/100 dilution (red) compared with an unlabelled control (cells without incubation with primary antibody; green).



<b>Positive Control</b>	Human liver tissue lysate, A431, HUVEC, SH-SY5Y, rat brain tissue, human pancreas tissue, mouse testis tissue.
<b>Application Notes</b>	<b>WB:</b> 1:500 <b>ICC:</b> 1:50-1:200 <b>IHC:</b> 1:50-1:200 <b>FC:</b> 1:50-1:100

## Additional Information

<b>Form</b>	Liquid
<b>Storage Instructions</b>	Store at +4°CAfter thawing. Aliquot store at -20°C or -80°C Avoid repeated freeze / thaw cycles.
<b>Storage Buffer</b>	1* TBS (pH7.4), 0.5% BSA, 50% Glycerol. Preservative: 0.05% Sodium Azide.
<b>Note</b>	The product is for research use only, not for use in diagnostic or therapeutic procedures.

# OmnimAbs.com

order@Omnimabs.com  
506 N. GARFIELD AVE #210 ALHAMBRA, CA 91801  
This product is for research use only and is not approved for use in humans or in clinical diagnosis. Primary Antibodies are guaranteed for 1 year from date of receipt

