



Catalog: OM638924

Scan to get more validated information



WDR5

Catalog: OM638924

☐ 100 µl

Product profile

Product name	WDR5
Antibody Type	Primary Antibodies
Product description	WD-repeat protein 5 (WDR5, also designated BMP-2-induced gene 3 kb or BIG-3) belongs to the family of WD-40 repeat proteins, and is essential for vertebrate development, Hox gene activation and global H3 K4 trimethylation. WDR5 is a conserved subunit of Trithorax (TRX) histone methyltransferase complexes that selectively binds to dimethylated Lys4 (K4me2) in histone H3 to promote K4 trimethylation by TRX. It is expressed in osteoblasts, chondrocytes, osteocytes and marrow stromal cells. The WDR5 protein contains 7 WD-repeats, which may play a role in its function of accelerating osteoblast differentiation.
Immunogen	Recombinant protein

Key Feature

Clonality	Polyclonal
Isotype	IgG
Host Species	Rabbit
Tested Applications	WB ,ICC ,FC
Species Reactivity	Human
Concentration	1 mg/mL

Target Information

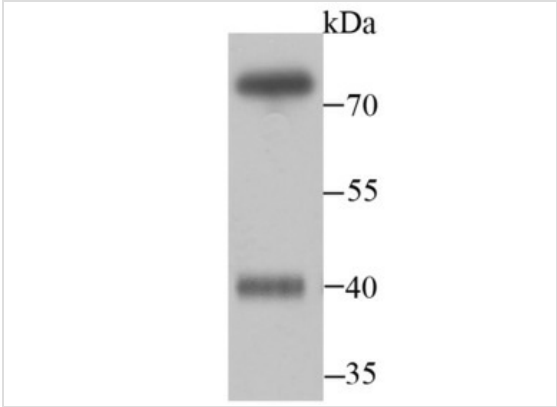
Alternative Names	2410008O07Rik antibody AA408785 antibody AA960360 antibody BIG 3 antibody Big antibody BIG3 antibody BMP2 induced 3 kb gene protein antibody BMP2 induced gene, 3-KB antibody BMP2-induced 3-kb gene protein antibody MGC114572 antibody OTTHUMP00000162494 antibody SWD 3 antibody SWD3 antibody SWD3 Set1c WD40 repeat protein homolog antibody WD repeat containing protein 5 antibody WD repeat domain 5 antibody WD repeat protein 5 antibody WD repeat-containing protein 5 antibody WD repeat-containing protein BIG-3 antibody WDR 5 antibody Wdr5 antibody WDR5_HUMAN antibody
Molecular Weight(MW)	36 kDa, additional band 70 kDa.

Database Links

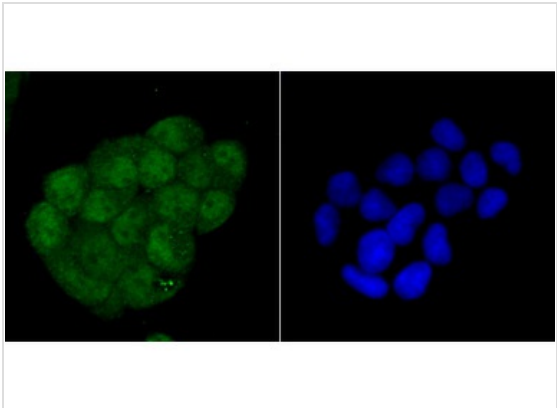
SwissProt ID

P61964

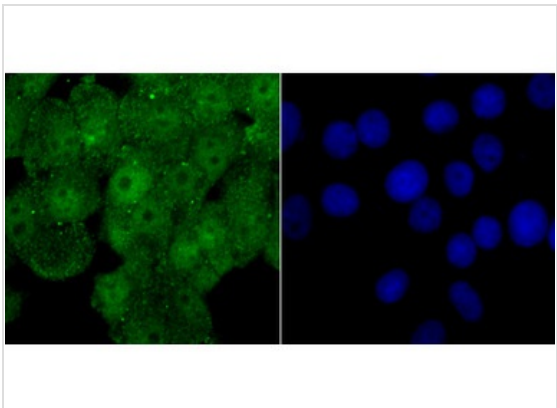
Application



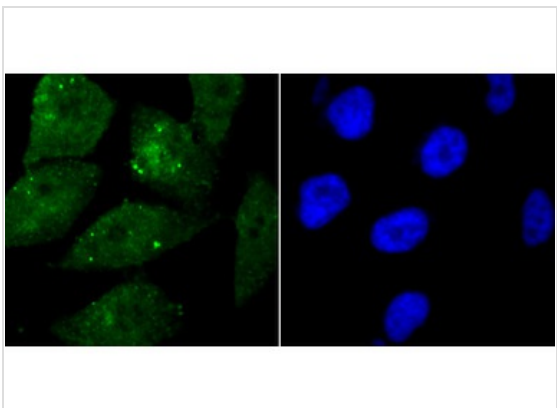
Application
Fig1: Western blot analysis of WDR5 on MCF-7 cell lysate using anti-WDR5 antibody at 1/500 dilution.



Application
Fig2: ICC staining WDR5 in HeLa cells (green). The nuclear counter stain is DAPI (blue). Cells were fixed in paraformaldehyde, permeabilised with 0.25% Triton X100/PBS.



Application
Fig3: ICC staining WDR5 in MCF-7 cells (green). The nuclear counter stain is DAPI (blue). Cells were fixed in paraformaldehyde, permeabilised with 0.25% Triton X100/PBS.



Application
Fig4: ICC staining WDR5 in PC-3M cells (green). The nuclear counter stain is DAPI (blue). Cells were fixed in paraformaldehyde, permeabilised with 0.25% Triton X100/PBS.

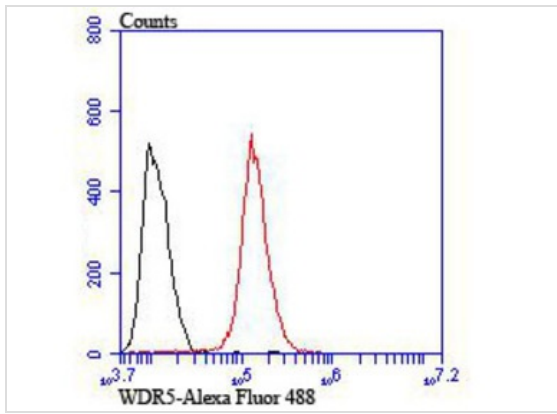


Fig5: Flow cytometric analysis of MCF-7 cells with WDR5 antibody at 1/100 dilution (red) compared with an unlabelled control (cells without incubation with primary antibody; black). Alexa Fluor 488-conjugated goat anti rabbit IgG was used as the secondary antibody.

Positive Control	Hela, MCF-7, PC-3M.
Application Notes	WB: 1:500-1:1,000 ICC: 1:50-1:200 FC: 1:50-1:100

Additional Information

Form	Liquid
Storage Instructions	Store at +4°C after thawing. Aliquot store at -20°C or -80°C. Avoid repeated freeze / thaw cycles.
Storage Buffer	1*TBS (pH7.4), 0.5%BSA, 50%Glycerol. Preservative: 0.05% Sodium Azide.
Note	The product is for research use only,not for use in diagnostic or therapeutic procedures.

OmnimAbs.com

order@Omnimabs.com
 506 N. GARFIELD AVE #210 ALHAMBRA, CA 91801
 This product is for research use only and is not approved for use in humans or in clinical diagnosis. Primary Antibodies are guaranteed for 1 year from date of receipt