



Catalog: OM295297

Scan to get more validated information



YEATS4 Antibody

Catalog: OM295297

☐ 100ug

Product profile

Product name	YEATS4 Antibody
Antibody Type	Primary Antibodies
Product description	YEATS4 is found in the nucleoli. It has high sequence homology to human MLLT1, and yeast and human MLLT3 proteins. Both MLLT1 and MLLT3 proteins belong to a class of transcription factors, indicating that the encoded protein might also represent a transcription factor. This protein is thought to be required for RNA transcription. This gene has been shown to be amplified in tumors.1) Zimmermann, K., et al., (2002) J. Biol. Chem. 277 (21), 18626-18631.
Immunogen	Antibody produced in rabbits immunized with a synthetic peptide corresponding to a region of human YEATS4.

Key Feature

Clonality	Polyclonal
Host Species	Rabbit
Tested Applications	ELISA ,IHC ,WB
Species Reactivity	Dog Human Mouse Rat
Concentration	1 mg/ml
Purification	Affinity purified

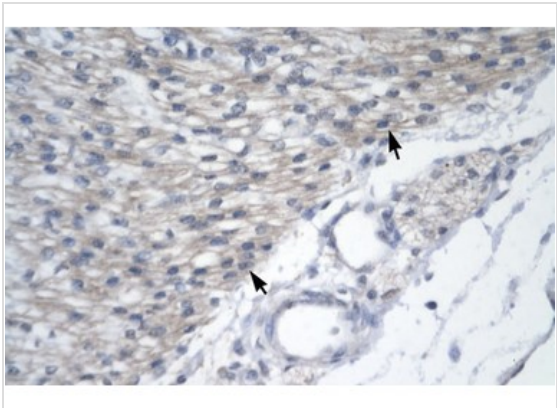
Target Information

Gene Symbol	YEATS4
Alternative Names	YEATS4, YAF9, GAS41, NUBI-1, 4930573H17Rik, B230215M10Rik
Molecular Weight(MW)	25 kDa

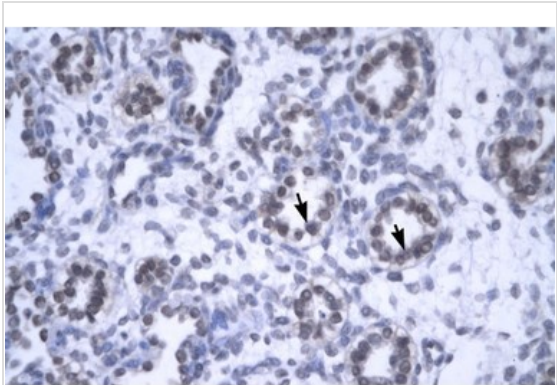
Database Links

Entrez Gene	8089
-------------	------

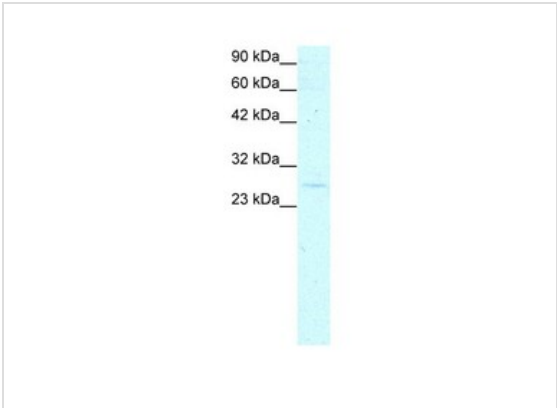
Application



Application
Antibody used in IHC on Human Heart at 4.0-8.0 ug/ml.



Application
Antibody used in IHC on Human Lung at 4.0-8.0 ug/ml.



Application
Antibody used in WB on Human Jurkat 0.2-1 ug/ml.

Positive Control	1) Cat. No. 1205 - Jurkat Cell Lysate
Application Notes	YEATS4 antibody can be used for detection of YEATS4 by ELISA at 1:62500. YEATS4 antibody can be used for detection of YEATS4 by western blot at 0.5 µg/mL, and HRP conjugated secondary antibody should be diluted 1:50,000 - 100,000.:

Additional Information

Form	Liquid
Storage Instructions	For short periods of storage (days) store at 4 °C. For longer periods of storage, store YEATS4 antibody at -20°C. As with any antibody avoid repeat freeze-thaw cycles.
Storage Buffer	Antibody is lyophilized in PBS buffer with 2% sucrose. Add 50 µL of distilled water. Final antibody concentration

ration is 1 mg/mL.

Note

The product is for research use only, not for use in diagnostic or therapeutic procedures.

OmnimAbs.com

order@Omnimabs.com

506 N. GARFIELD AVE #210 ALHAMBRA, CA 91801

This product is for research use only and is not approved for use in humans or in clinical diagnosis. Primary Antibodies are guaranteed for 1 year from date of receipt

