



Catalog: OM295790

Scan to get more validated information



ZNF341 Antibody

Catalog: OM295790

☐ 100ug

Product profile

Product name	ZNF341 Antibody
Antibody Type	Primary Antibodies
Product description	The ZNF341 gene is located on chromosome 20.1) Ota, T., et al., (2004) Nat. Genet. 36 (1), 40-45.
Immunogen	Antibody produced in rabbits immunized with a synthetic peptide corresponding a region of human ZNF341.

Key Feature

Clonality	Polyclonal
Host Species	Rabbit
Tested Applications	ELISA ,IHC ,WB
Species Reactivity	Human
Concentration	1 mg/ml
Purification	Affinity purified

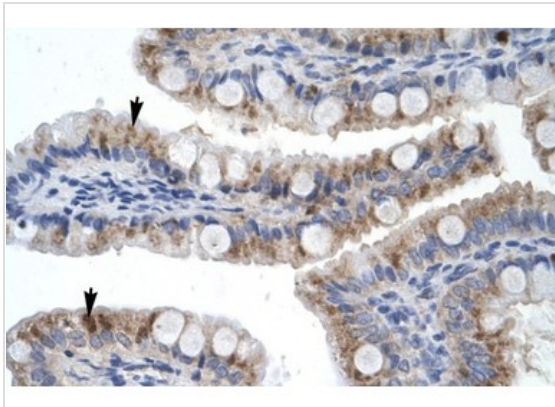
Target Information

Gene Symbol	ZNF341
Alternative Names	ZNF341,
Molecular Weight(MW)	92 kDa

Database Links

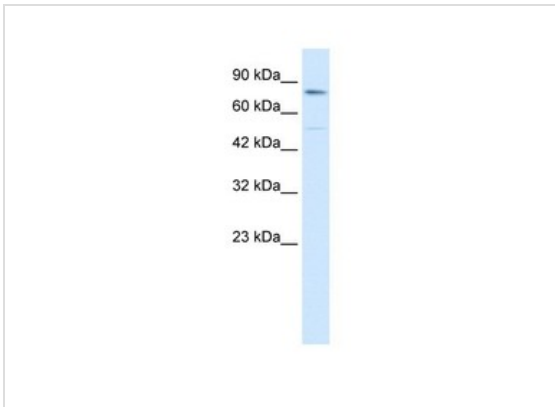
Entrez Gene	84905
Protein Accession	NP_116208

Application



Application

Antibody used in IHC on Human Intestine at 4.0-8.0 ug/ml.



Application

Antibody used in WB on Human HepG2 at 0.2-1 ug/ml.

Positive Control

1) Cat. No. 1211 - HepG2 Cell Lysate

Application Notes

ZNF341 antibody can be used for detection of ZNF341 by ELISA at 1:312500. ZNF341 antibody can be used for detection of ZNF341 by western blot at 0.5 µg/mL, and HRP conjugated secondary antibody should be diluted 1:50,000 - 100,000.:

Additional Information

Form

Liquid

Storage Instructions

For short periods of storage (days) store at 4°C. For longer periods of storage, store ZNF341 antibody at -20°C. As with any antibody avoid repeat freeze-thaw cycles.

Storage Buffer

Antibody is lyophilized in PBS buffer with 2% sucrose. Add 50 µL of distilled water. Final antibody concentration is 1 mg/mL.

Note

The product is for research use only, not for use in diagnostic or therapeutic procedures.

OmnimAbs.com

order@Omnimabs.com

506 N. GARFIELD AVE #210 ALHAMBRA, CA 91801

This product is for research use only and is not approved for use in humans or in clinical diagnosis. Primary Antibodies are guaranteed for 1 year from date of receipt