



Catalog: OM295821

Scan to get more validated information



ZNF394 Antibody

Catalog: OM295821

☐ 100ug

Product profile

| | |
|---------------------|---|
| Product name | ZNF394 Antibody |
| Antibody Type | Primary Antibodies |
| Product description | ZNF394 belongs to the krueppel C2H2-type zinc-finger protein family and may be involved in transcriptional regulation.1) Huang, C., (2004) Biochem. Biophys. Res. Commun. 320 (4), 1298-1305. |
| Immunogen | Antibody produced in rabbits immunized with a synthetic peptide corresponding a region of human ZNF394. |

Key Feature

| | |
|---------------------|-------------------|
| Clonality | Polyclonal |
| Host Species | Rabbit |
| Tested Applications | ELISA ,IHC ,WB |
| Species Reactivity | Human |
| Concentration | 1 mg/ml |
| Purification | Affinity purified |

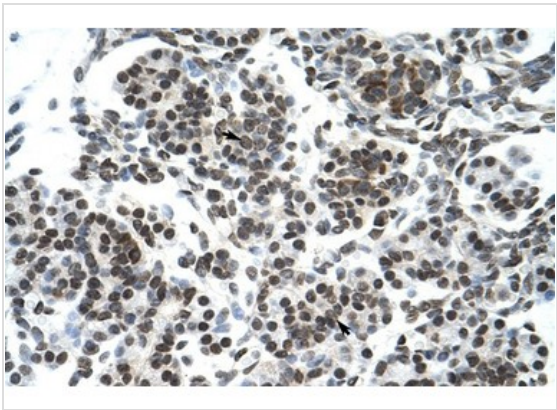
Target Information

| | |
|----------------------|---------------------------|
| Gene Symbol | ZNF394 |
| Alternative Names | ZNF394, ZSCAN46, ZKSCAN14 |
| Molecular Weight(MW) | 64 kDa |

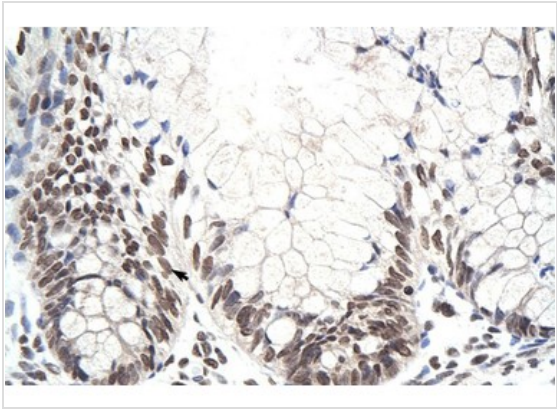
Database Links

| | |
|-------------------|-----------|
| Entrez Gene | 84124 |
| Protein Accession | NP_115540 |

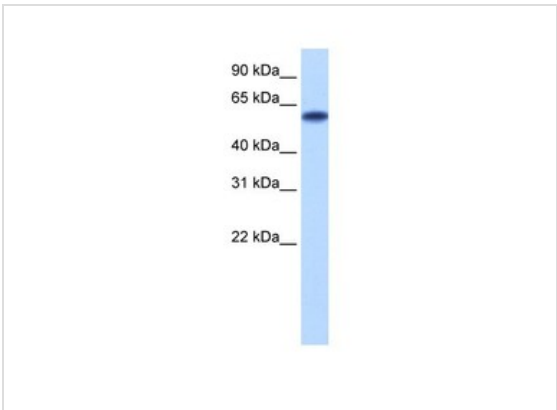
Application



Application
Antibody used in IHC on Human Pancreas at 4.0-8.0 ug/ml.



Application
Antibody used in IHC on Human Intestine at 4.0-8.0 ug/ml.



Application
Antibody used in WB on Transfected 293T at 0.2-1 ug/ml.

| | |
|-------------------|---|
| Positive Control | 1) Tranfected 293T Cell Lysate |
| Application Notes | ZNF394 antibody can be used for detection of ZNF394 by ELISA at 1:312500. ZNF394 antibody can be used for detection of ZNF394 by western blot at 0.25 µg/mL, and HRP conjugated secondary antibody should be diluted 1:50,000 - 100,000.: |

Additional Information

| | |
|----------------------|--|
| Form | Liquid |
| Storage Instructions | For short periods of storage (days) store at 4°C. For longer periods of storage, store ZNF394 antibody at -20°C. As with any antibody avoid repeat freeze-thaw cycles. |
| Storage Buffer | Antibody is lyophilized in PBS buffer with 2% sucrose. Add 50 µL of distilled water. Final antibody concentration is 1 mg/mL. |
| Note | The product is for research use only,not for use in diagnostic or therapeutic procedures. |

OmnimAbs.com

order@Omnimabs.com
506 N. GARFIELD AVE #210 ALHAMBRA, CA 91801
This product is for research use only and is not approved for use in humans or in clinical diagnosis. Primary Antibodies are guaranteed for 1 year from date of receipt
