



Catalog: OM295875

Scan to get more validated information



ZNF445 Antibody

Catalog: OM295875

☐ 100ug

Product profile

Product name	ZNF445 Antibody
Antibody Type	Primary Antibodies
Product description	ZNF445 belongs to the krueppel C2H2-type zinc-finger protein family. It contains 14 C2H2-type zinc fingers, 1 KRAB domain and 1 SCAN box domain. ZNF445 may be involved in transcriptional regulation.1) Luo , K., Gene 367, 89-100 (2006).
Immunogen	Antibody produced in rabbits immunized with a synthetic peptide corresponding a region of human ZNF445.

Key Feature

Clonality	Polyclonal
Host Species	Rabbit
Tested Applications	ELISA ,WB
Species Reactivity	Human
Concentration	1 mg/ml
Purification	Affinity purified

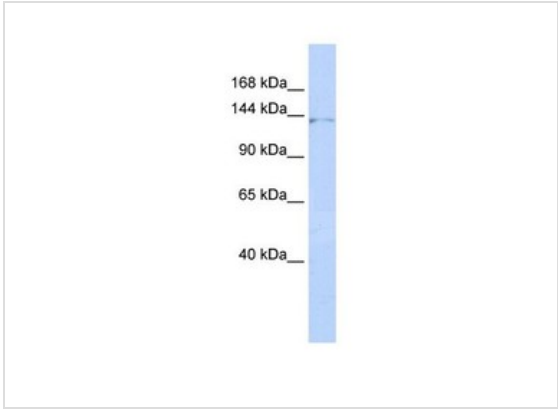
Target Information

Gene Symbol	ZNF445
Alternative Names	ZNF445, MGC126535, ZKSCAN15, ZNF168, ZSCAN47
Molecular Weight(MW)	119 kDa

Database Links

Entrez Gene	353274
Protein Accession	NP_852466

Application



Application

Antibody used in WB on Human HepG2 at 0.2-1 ug/ml.

Positive Control	1) Cat. No. 1211 - HepG2 Cell Lysate
Application Notes	ZNF445 antibody can be used for detection of ZNF445 by ELISA at 1:62500. ZNF445 antibody can be used for detection of ZNF445 by western blot at 1 µg/mL, and HRP conjugated secondary antibody should be diluted 1:50,000 - 100,000.:

Additional Information

Form	Liquid
Storage Instructions	For short periods of storage (days) store at 4 °C. For longer periods of storage, store ZNF445 antibody at -20 °C. As with any antibody avoid repeat freeze-thaw cycles.
Storage Buffer	Antibody is lyophilized in PBS buffer with 2% sucrose. Add 50 µL of distilled water. Final antibody concentration is 1 mg/mL.
Note	The product is for research use only, not for use in diagnostic or therapeutic procedures.

OmnimAbs.com

order@Omnimabs.com
506 N. GARFIELD AVE #210 ALHAMBRA, CA 91801
This product is for research use only and is not approved for use in humans or in clinical diagnosis. Primary Antibodies are guaranteed for 1 year from date of receipt