



Catalog: OM209394

Scan to get more validated information



# c-Myc Antibody (A-14) Alexa Fluor® 405

Catalog: OM209394

☐ 100ul

## Product profile

Product name	c-Myc Antibody (A-14) Alexa Fluor® 405
Antibody Type	Tags Antibodies
Modification Notes	c-Myc-, N-Myc- and L-Myc-encoded proteins function in cell proliferation, differentiation and neoplastic disease. Myc proteins are nuclear proteins with relatively short half lives. Amplification of the c-Myc gene has been found in several types of human tumors including lung, breast and colon carcinomas, while the N-Myc gene has been found amplified in neuroblastomas. The L-Myc gene has been reported to be amplified and expressed at high level in human small cell lung carcinomas. The presence of three sequence motifs in the c-Myc COOH terminus, including the leucine zipper, the helix-loop-helix and a basic region provide initial evidence for a sequence-specific binding function. A basic region helix-loop-helix leucine zipper motif (bHLH-Zip) protein, designated Max, specifically associates with c-Myc, N-Myc and L-Myc proteins. The c-Myc-Max complex binds to DNA in a sequence-specific manner under conditions where neither Max nor Myc exhibit appreciable binding. Max can also form heterodimers with at least two additional bHLH-Zip proteins, Mad and Mxi1, and Mad-Max dimers have been shown to repress transcription through interaction with mSin3.

## Key Feature

Clonality	Polyclonal
Isotype	IgG
Host Species	Rabbit
Tested Applications	WB ,IP ,IF ,IHC ,FC ,ELISA ,GS ,ChIP
Species Reactivity	Human Mouse Rat
Concentration	1mg/ml
Purification	Affinity purified

## Target Information

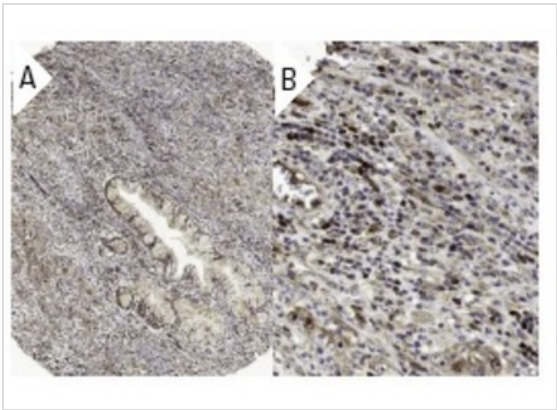
Alternative Names	epitope mapping near the C-terminus of c-Myc of human origin
-------------------	--

Database Links

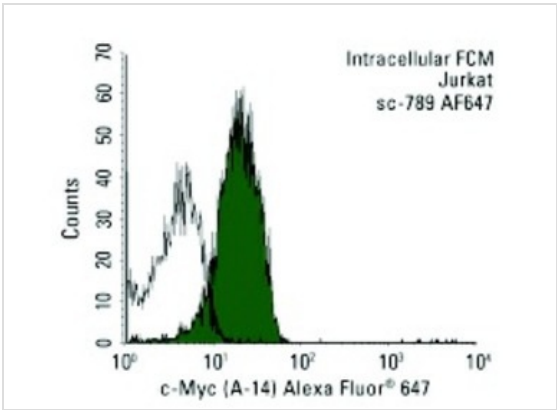
Entrez Gene

4609

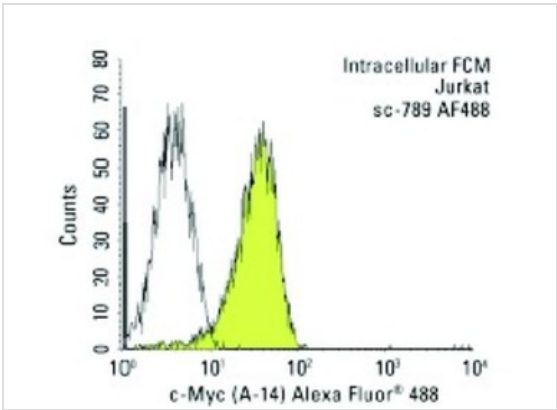
Application



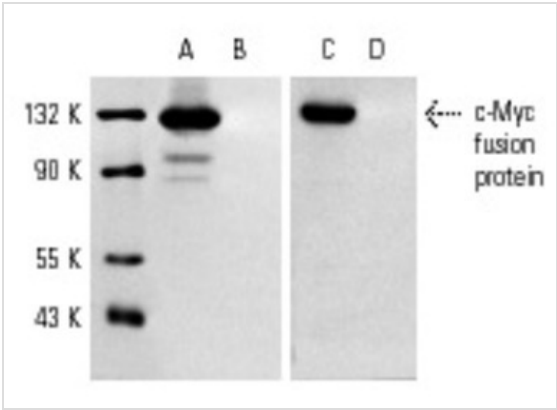
**Application**  
Immunoperoxidase staining of formalin fixed, paraffin-embedded human cervical cancer tissue showing nuclear and cytoplasmic staining of tumor cells at low (A) and high (B) magnification. Kindly provided by The Swedish Human Protein Atlas (HPA) program.



**Application**  
Intracellular FCM analysis of fixed and permeabilized Jurkat cells. Black line histogram represents the isotype control, normal rabbit IgG: .

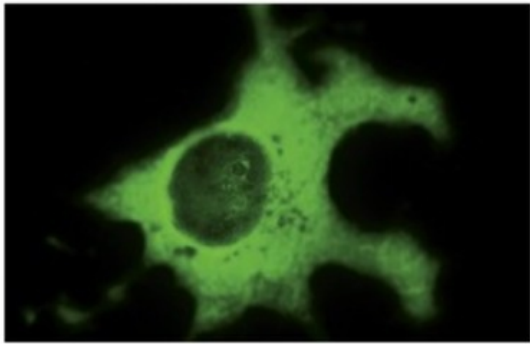


**Application**  
Intracellular FCM analysis of fixed and permeabilized Jurkat cells. Black line histogram represents the isotype control, normal rabbit IgG: .

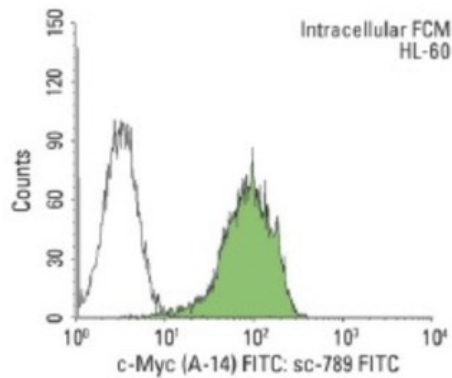


**Application**  
Antibodies tested include c-Myc (A-14): (A,B) and c-Myc (A-14)-G: (C,D).

Application

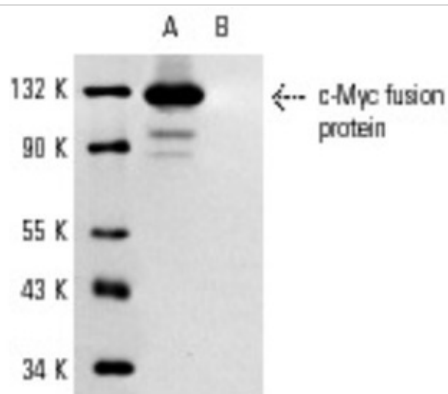


Immunofluorescence staining of methanol-fixed COS cells transfected with c-Myc fusion protein showing cytoplasmic staining.



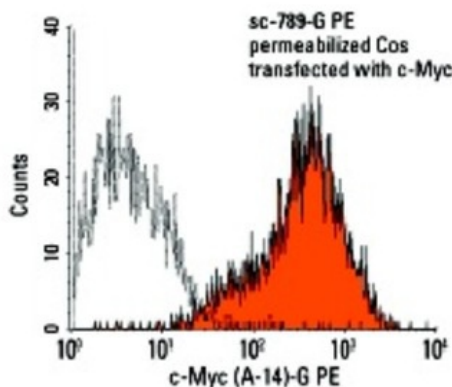
#### Application

Intracellular FCM analysis of fixed and permeabilized HL-60 cells. Black line histogram represents the isotype control, normal rabbit IgG: .



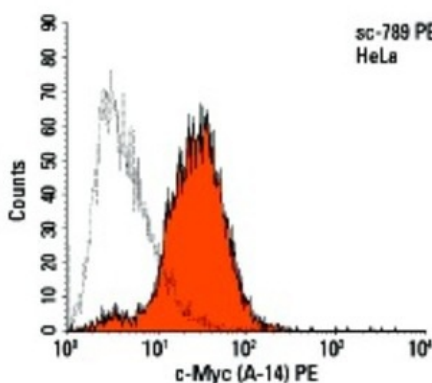
#### Application

Western blot analysis of whole cell lysates prepared from COS cells transfected with a c-Myc fusion protein (A) and non-transfected (B) cells.



#### Application

Intracellular FCM analysis of methanol permeabilized COS cells transfected with c-Myc. Solid black line histogram represents control goat IgG.



#### Application

Intracellular FCM analysis of methanol permeabilized HeLa cells. Solid black line histogram represents control goat IgG.

<b>Application Notes</b>	recommended for detection of c-Myc p67 and 9E10 Myc tagged fusion proteins of human and monkey origin by WB, IP, IF, IHC(P), FCM and ELISA; only minimal cross-reactivity with c-Myc of mouse and rat origin:
--------------------------	---

## Additional Information

---

<b>Form</b>	Liquid
<b>Storage Instructions</b>	For short-term storage, store at 4° C. For long-term storage, aliquot and store at -20°C or below. Avoid multiple freeze-thaw cycles.
<b>Storage Buffer</b>	phosphate buffered saline , pH 7.4, 150mM NaCl, 0.02% sodium azide and 50% glycerol.
<b>Note</b>	The product is for research use only,not for use in diagnostic or therapeutic procedures.

# OmnimAbs.com

---

order@Omnimabs.com

506 N. GARFIELD AVE #210 ALHAMBRA, CA 91801

This product is for research use only and is not approved for use in humans or in clinical diagnosis. Primary Antibodies are guaranteed for 1 year from date of receipt

---