



Catalog: OM209572

Scan to get more validated information



# c-Myc Antibody (A-14) TRITC

Catalog: OM209572

☐ 100ul

## Product profile

|                    |   |
|--------------------|---|
| Product name       | c-Myc Antibody (A-14) TRITC   |
| Antibody Type      | Tags Antibodies   |
| Modification Notes | c-Myc-, N-Myc- and L-Myc-encoded proteins function in cell proliferation, differentiation and neoplastic disease. Myc proteins are nuclear proteins with relatively short half lives. Amplification of the c-Myc gene has been found in several types of human tumors including lung, breast and colon carcinomas, while the N-Myc gene has been found amplified in neuroblastomas. The L-Myc gene has been reported to be amplified and expressed at high level in human small cell lung carcinomas. The presence of three sequence motifs in the c-Myc COOH terminus, including the leucine zipper, the helix-loop-helix and a basic region provide initial evidence for a sequence-specific binding function. A basic region helix-loop-helix leucine zipper motif (bHLH-Zip) protein, designated Max, specifically associates with c-Myc, N-Myc and L-Myc proteins. The c-Myc-Max complex binds to DNA in a sequence-specific manner under conditions where neither Max nor Myc exhibit appreciable binding. Max can also form heterodimers with at least two additional bHLH-Zip proteins, Mad and Mxi1, and Mad-Max dimers have been shown to repress transcription through interaction with mSin3. |

## Key Feature

|                     |                                      |
|---------------------|--------------------------------------|
| Clonality           | Polyclonal                           |
| Isotype             | IgG                                  |
| Host Species        | Rabbit                               |
| Tested Applications | WB ,IP ,IF ,IHC ,FC ,ELISA ,GS ,ChIP |
| Species Reactivity  | Human Mouse Rat                      |
| Concentration       | 1mg/ml                               |
| Purification        | Affinity purified                    |

## Target Information

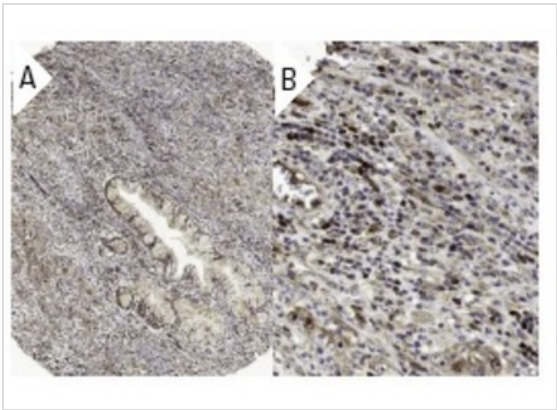
|                   |  |
|-------------------|--|
| Alternative Names | epitope mapping near the C-terminus of c-Myc of human origin |
|-------------------|--|

Database Links

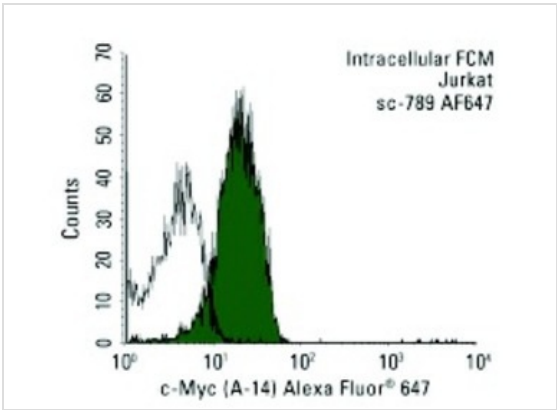
Entrez Gene

4609

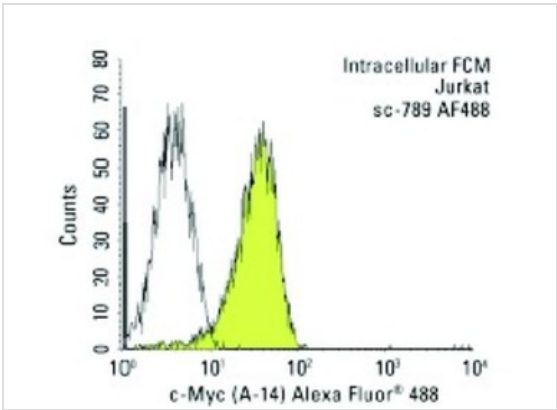
Application



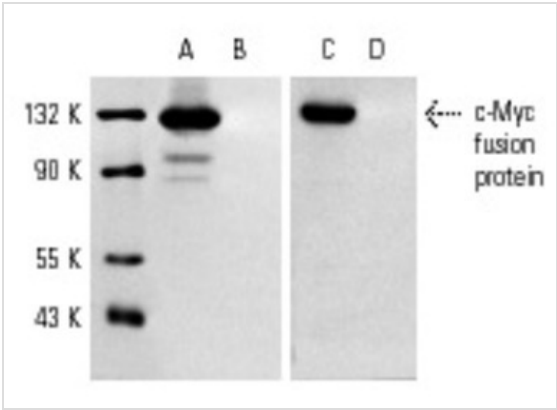
**Application**  
Immunoperoxidase staining of formalin fixed, paraffin-embedded human cervical cancer tissue showing nuclear and cytoplasmic staining of tumor cells at low (A) and high (B) magnification. Kindly provided by The Swedish Human Protein Atlas (HPA) program.



**Application**  
Intracellular FCM analysis of fixed and permeabilized Jurkat cells. Black line histogram represents the isotype control, normal rabbit IgG: .

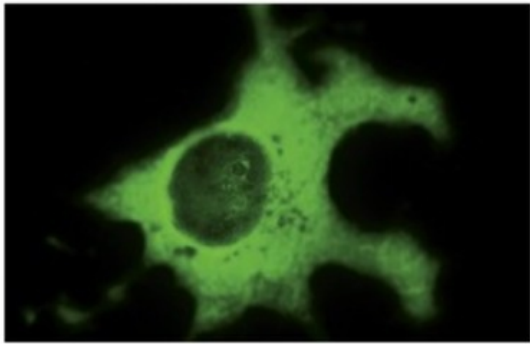


**Application**  
Intracellular FCM analysis of fixed and permeabilized Jurkat cells. Black line histogram represents the isotype control, normal rabbit IgG: .

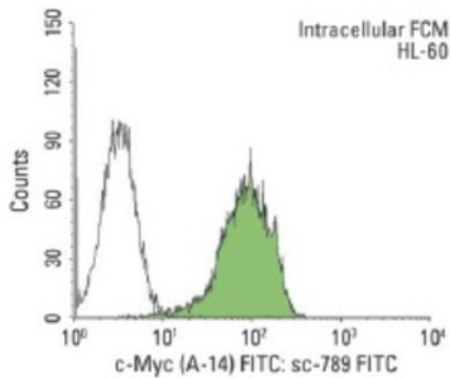


**Application**  
Antibodies tested include c-Myc (A-14): (A,B) and c-Myc (A-14)-G: (C,D).

Application

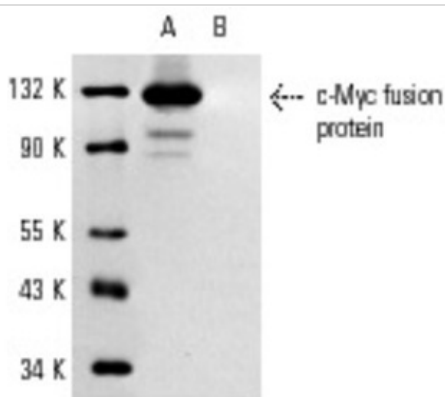


Immunofluorescence staining of methanol-fixed COS cells transfected with c-Myc fusion protein showing cytoplasmic staining.



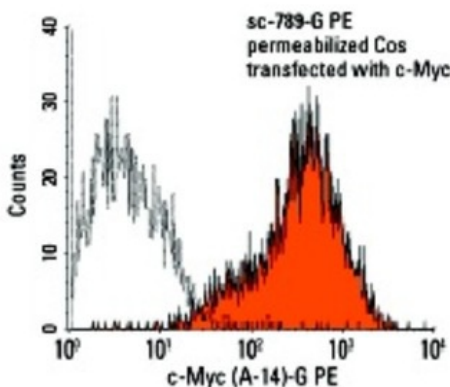
#### Application

Intracellular FCM analysis of fixed and permeabilized HL-60 cells. Black line histogram represents the isotype control, normal rabbit IgG: .



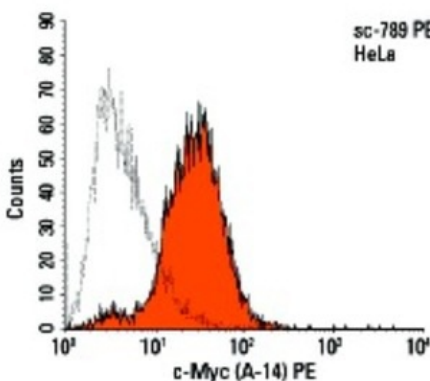
#### Application

Western blot analysis of whole cell lysates prepared from COS cells transfected with a c-Myc fusion protein (A) and non-transfected (B) cells.



#### Application

Intracellular FCM analysis of methanol permeabilized COS cells transfected with c-Myc. Solid black line histogram represents control goat IgG.



#### Application

Intracellular FCM analysis of methanol permeabilized HeLa cells. Solid black line histogram represents control goat IgG.

|                          |   |
|--------------------------|---|
| <b>Application Notes</b> | recommended for detection of c-Myc p67 and 9E10 Myc tagged fusion proteins of human and monkey origin by WB, IP, IF, IHC(P), FCM and ELISA; only minimal cross-reactivity with c-Myc of mouse and rat origin: |
|--------------------------|---|

## Additional Information

---

|                             |   |
|-----------------------------|---|
| <b>Form</b>                 | Liquid  |
| <b>Storage Instructions</b> | For short-term storage, store at 4° C. For long-term storage, aliquot and store at -20°C or below. Avoid multiple freeze-thaw cycles. |
| <b>Storage Buffer</b>       | phosphate buffered saline , pH 7.4, 150mM NaCl, 0.02% sodium azide and 50% glycerol.  |
| <b>Note</b>                 | The product is for research use only,not for use in diagnostic or therapeutic procedures.   |

# OmnimAbs.com

---

order@Omnimabs.com

506 N. GARFIELD AVE #210 ALHAMBRA, CA 91801

This product is for research use only and is not approved for use in humans or in clinical diagnosis. Primary Antibodies are guaranteed for 1 year from date of receipt

---