



Catalog: OM159056

Scan to get more validated information



# caspase-1 Antibody (A-19) FITC

Catalog: OM159056

☐ 100ul

## Product profile

Product name	caspase-1 Antibody (A-19) FITC
Antibody Type	Primary Antibodies
Modification Notes	Caspase-1, originally designated ICE (for IL-1 converting enzyme), is a member of the group of caspases with large prodomains. Caspase-1 promotes maturation of interleukin IL-1 $\beta$ and interleukin18 (IL-18) by proteolytic cleavage of precursor forms into biologically active pro-inflammatory cytokines. Active caspase-1, a (p20/p10) $_2$ tetramer, is necessary and sufficient for cleavage of precursor IL-1 as well as for induction of apoptosis in some cell lines. The highly conserved family of caspases mediate many of the morphological and biochemical features of apoptosis, including structural dismantling of cell bodies and nuclei, fragmentation of genomic DNA, destruction of regulatory proteins and propagation of other pro-apoptotic molecules. The human Caspase-1 gene maps to chromosome 2q14 and encodes a cytoplasmic protein expressed in liver, heart, skeletal muscle kidney and testis. Caspase-1 has been implicated in inflammation, septic shock, and other situations such as wound healing and the growth of certain leukemias.

## Key Feature

Clonality	Polyclonal
Isotype	IgG
Host Species	Rabbit
Tested Applications	WB ,IP ,IF ,FC ,ELISA
Species Reactivity	Human Mouse Rat
Concentration	1mg/ml
Purification	Affinity purified

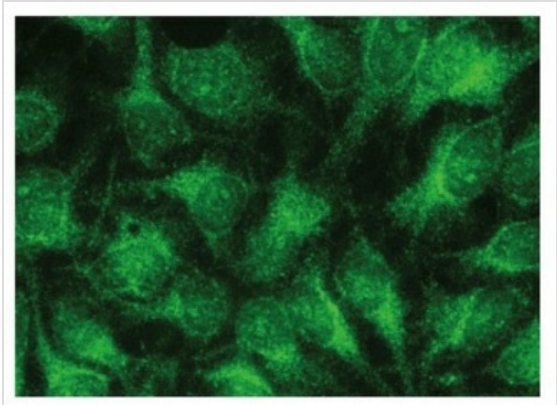
## Target Information

Alternative Names	epitope mapping at the N-terminus of caspase-1 of human origin
Tissue Specificity	epitope mapping at the N-terminus of caspase-1 of human origin

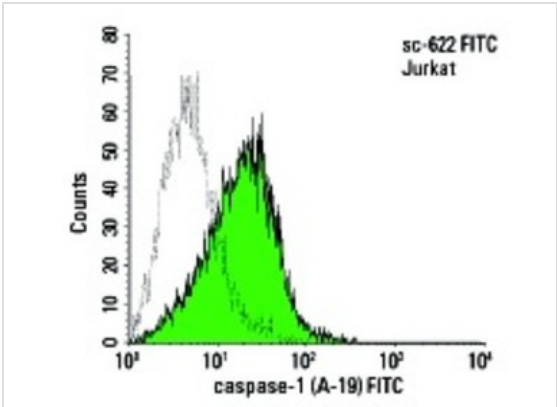
Database Links

Entrez Gene	834
-------------	-----

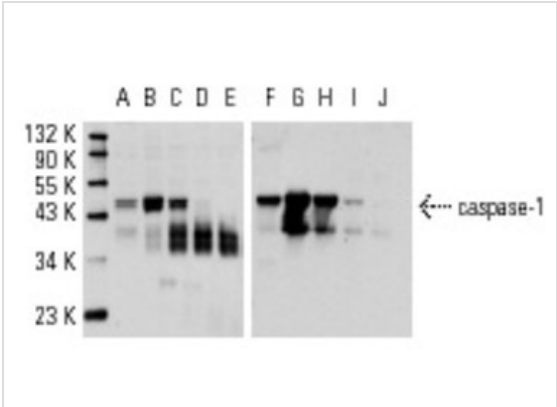
Application



**Application**  
Immunofluorescence staining of methanol-fixed HeLa cells showing cytoplasmic localization.



**Application**  
Intracellular FCM analysis of fixed and permeabilized Jurkat cells. Black line histogram represents the isotype control, normal rabbit IgG: .



**Application**  
Antibodies tested include caspase-1 p10 (C-20): (A-E) and caspase-1 (A-19): (F-J).

Application Notes	recommended for detection of the caspase-1 precursor, CARD 17, and COP of human origin by WB, IP, IF, FCM and ELISA; non cross-reactive with caspase-1 p10 or caspase-1 p20:
-------------------	--

Additional Information

Form	Liquid
Storage Instructions	For short-term storage, store at 4° C. For long-term storage, aliquot and store at -20°C or below. Avoid multiple freeze-thaw cycles.
Storage Buffer	phosphate buffered saline , pH 7.4, 150mM NaCl, 0.02% sodium azide and 50% glycerol.

**Note**

The product is for research use only,not for use in diagnostic or therapeutic procedures.

# OmnimAbs.com

---

order@Omnimabs.com

506 N. GARFIELD AVE #210 ALHAMBRA, CA 91801

This product is for research use only and is not approved for use in humans or in clinical diagnosis. Primary Antibodies are guaranteed for 1 year from date of receipt

---