



Catalog: OM638928

Scan to get more validated information



# eIF-4E

Catalog: OM638928

☐ 100 µl

## Product profile

Product name	eIF-4E
Antibody Type	Primary Antibodies
Product description	The initiation of protein synthesis in eukaryotic cells is regulated by interactions between protein initiation factors and RNA molecules. The eukaryotic initiation complex eIF4F exists in vitro as a trimeric complex of eIF4E, eIF4A and eIF4G. Together, the complex allows ribosome binding to mRNA by inducing the unwinding of mRNA secondary structures. eIF4E binds to the mRNA "cap" during an early step in the initiation of protein synthesis. eIF4A acts as an ATP-dependent RNA helicase. eIF4G acts as a bridge between eIF4E, eIF4A and the eIF3 complex.
Immunogen	Peptide

## Key Feature

Clonality	Polyclonal
Isotype	IgG
Host Species	Rabbit
Tested Applications	WB ,ICC ,IHC ,FC
Species Reactivity	Human Mouse Rat
Concentration	1 mg/mL

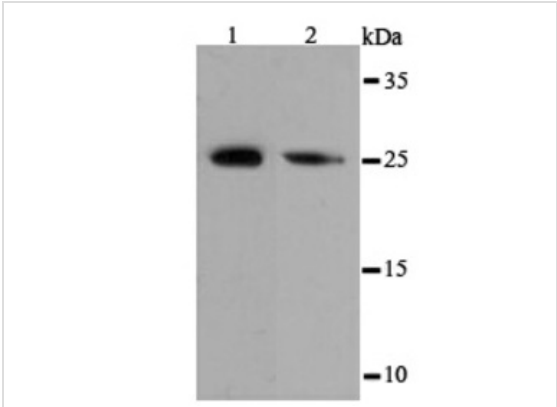
## Target Information

Alternative Names	AUTS19 antibody CBP antibody eIF 4E antibody eIF 4F 25 kDa subunit antibody EIF 4F antibody eIF-4E antibody eIF-4F 25 kDa subunit antibody eIF4E antibody EIF4E1 antibody EIF4EL1 antibody EIF4F antibody Eukaryotic translation initiation factor 4 E antibody Eukaryotic translation initiation factor 4E antibody Eukaryotic translation initiation factor 4E like 1 antibody IF4E_HUMAN antibody Messenger RNA Cap Binding Protein eIF 4E antibody MGC111573 antibody mRNA cap binding protein antibody mRNA cap-binding protein antibody
Molecular Weight(MW)	25 kDa

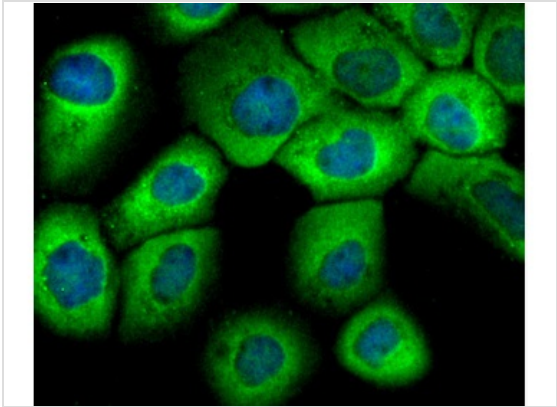
Database Links

SwissProt ID	P06730
	P63073
	P63074

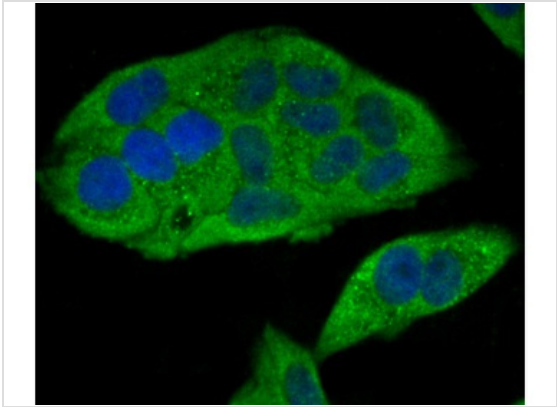
Application



**Application**  
Fig1: Western blot analysis of eIF-4E on different cell lysates using anti-eIF-4E antibody at 1/500 dilution. Positive control □ Lane1: PC-12 Lane2: NIH-3T3

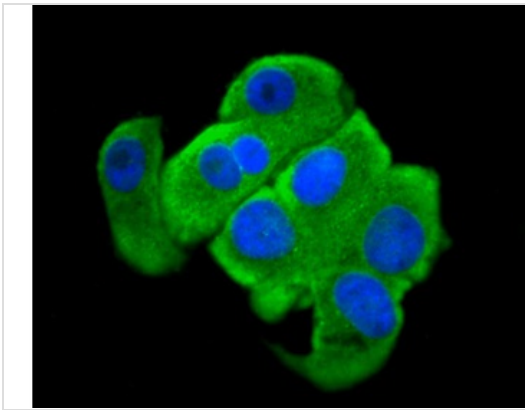


**Application**  
Fig2: ICC staining eIF-4E in A431 cells (green). The nuclear counter stain is DAPI (blue). Cells were fixed in paraformaldehyde, permeabilised with 0.25% Triton X100/PBS.



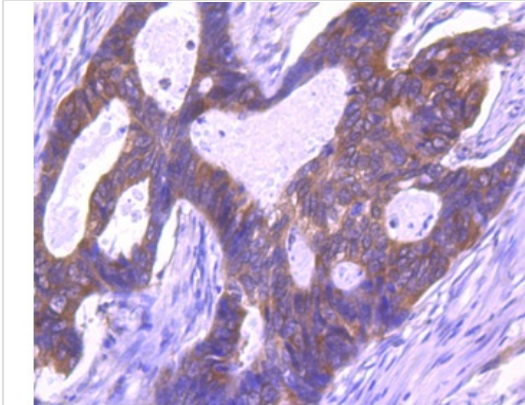
**Application**  
Fig3: ICC staining eIF-4E in HeLa cells (green). The nuclear counter stain is DAPI (blue). Cells were fixed in paraformaldehyde, permeabilised with 0.25% Triton X100/PBS.

**Application**  
Fig4: ICC staining eIF-4E in SK-Br-3 cells (green). The nuclear counter stain is DAPI (blue). Cells were fixed in paraformaldehyde, permeabilised with 0.25% Triton X100/PBS.



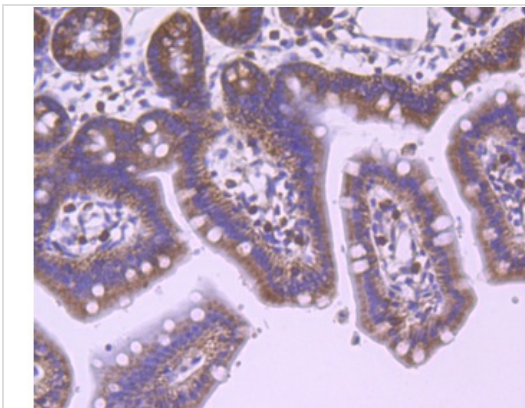
**Application**

Fig5: Immunohistochemical analysis of paraffin-embedded human colon cancer tissue using anti-eIF-4E antibody. Counter stained with hematoxylin.



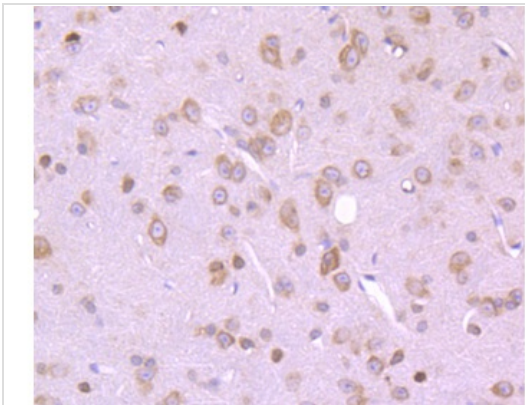
**Application**

Fig6: Immunohistochemical analysis of paraffin-embedded mouse colon tissue using anti-eIF-4E antibody. Counter stained with hematoxylin.



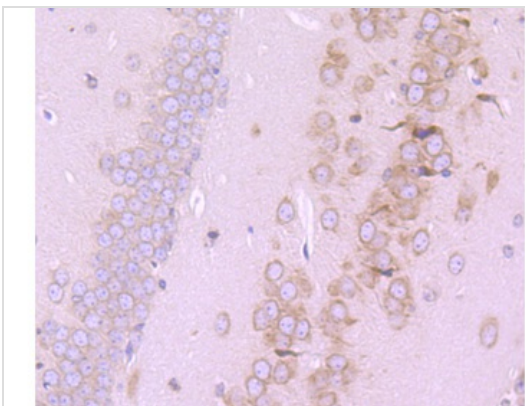
**Application**

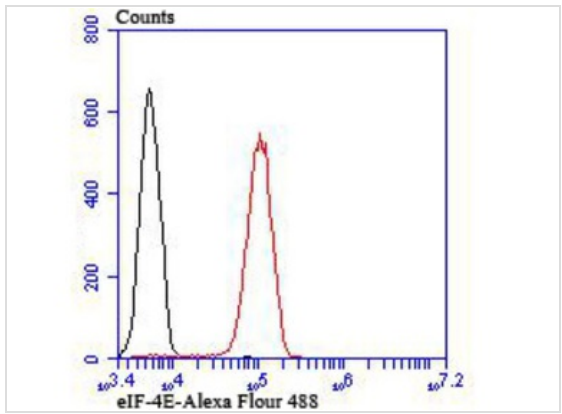
Fig7: Immunohistochemical analysis of paraffin-embedded mouse brain tissue using anti-eIF-4E antibody. Counter stained with hematoxylin.



**Application**

Fig8: Immunohistochemical analysis of paraffin-embedded mouse hippocampus tissue using anti-eIF-4E antibody. Counter stained with hematoxylin.





**Application**

Fig9: Flow cytometric analysis of 293T cells with eIF-4E antibody at 1/100 dilution (red) compared with an unlabelled control (cells without incubation with primary antibody; black).

Positive Control	PC-12, NIH-3T3, A431, Hela, SK-Br-3, 293T , human colon cancer tissue, mouse colon tissue, mouse brain tissue, mouse hippocampus tissue.
Application Notes	WB:1:500-1:1,000 ICC:1:50-1:200 IHC:1:50-1:100 FC:1:50-1:100

**Additional Information**

Form	Liquid
Storage Instructions	Store at +4°C after thawing. Aliquot store at -20°C or -80°C. Avoid repeated freeze / thaw cycles.
Storage Buffer	1*TBS (pH7.4), 0.5%BSA, 50%Glycerol. Preservative: 0.05% Sodium Azide.
Note	The product is for research use only,not for use in diagnostic or therapeutic procedures.

OmnimAbs.com

order@Omnimabs.com  
506 N. GARFIELD AVE #210 ALHAMBRA, CA 91801  
This product is for research use only and is not approved for use in humans or in clinical diagnosis. Primary Antibodies are guaranteed for 1 year from date of receipt