



Catalog: OM261716

Scan to get more validated information



I-Myc antibody, Internal

Catalog: OM261716

☐ 100ug

Product profile

Product name	I-Myc antibody, Internal
Antibody Type	Tags Antibodies
Product description	Rabbit Polyclonal antibody to I-Myc
Immunogen	A synthetic peptide corresponding to an Internal region of Human I-Myc

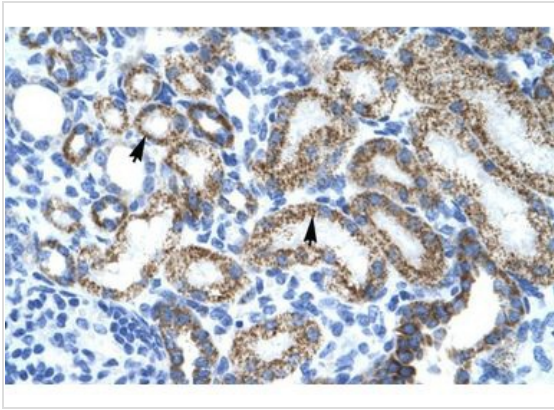
Key Feature

Clonality	Polyclonal
Isotype	IgG
Host Species	Rabbit
Tested Applications	IHC-P ,WB
Species Reactivity	Human
Concentration	1 mg/ml
Purification	Protein A

Target Information

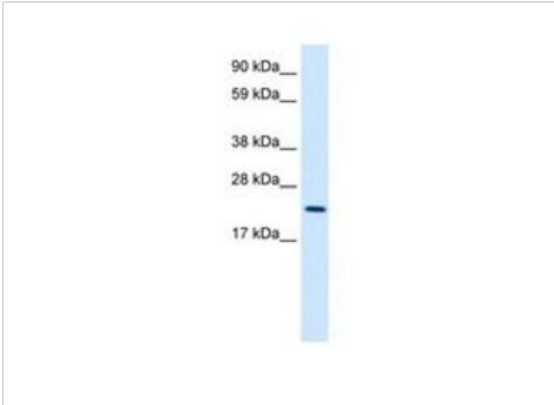
Gene Synonyms	MYCL , LMYC , BHLHE38
Target	I-Myc
Molecular Weight(MW)	40 KDa (note)

Application



Application

IHC-P analysis of human kidney tissue using I-Myc antibody at 4.0-8.0µg/ml.



Application

WB analysis of human kidney tissue using I-Myc antibody at 2.5µg/ml.

Positive Control human kidney

Application Notes *Optimal dilutions/concentrations should be determined by the researcher. :

Additional Information

Form	Liquid
Storage Instructions	Keep as concentrated solution. For short-term storage, store at 4°C. For long-term storage, aliquot and store at -20°C or below. Avoid multiple freeze-thaw cycles.
Storage Buffer	1x PBS buffer with 0.09% (w/v) sodium azide and 2% sucrose.
Note	The product is for research use only, not for use in diagnostic or therapeutic procedures.

OmnimAbs.com

order@Omnimabs.com

506 N. GARFIELD AVE #210 ALHAMBRA, CA 91801

This product is for research use only and is not approved for use in humans or in clinical diagnosis. Primary Antibodies are guaranteed for 1 year from date of receipt