

## Endothelial Cell Medium (ECM)

Catalog Number: OM760038

### Product Introduction

The endothelial cell medium is an optimal growth medium specifically designed for the in vitro culture of normal vascular endothelial cells. This product is a sterilized liquid medium containing essential and non - essential amino acids, vitamins, organic and inorganic compounds, hormones, growth factors, trace minerals, and low - concentration fetal bovine serum (5%). Its buffering system is bicarbonate, and after balancing in a 5% CO<sub>2</sub> cell incubator, the pH stabilizes at 7.4, providing an ideal nutritional environment for endothelial cells and selectively promoting their in vitro proliferation and growth.

### Application Scope

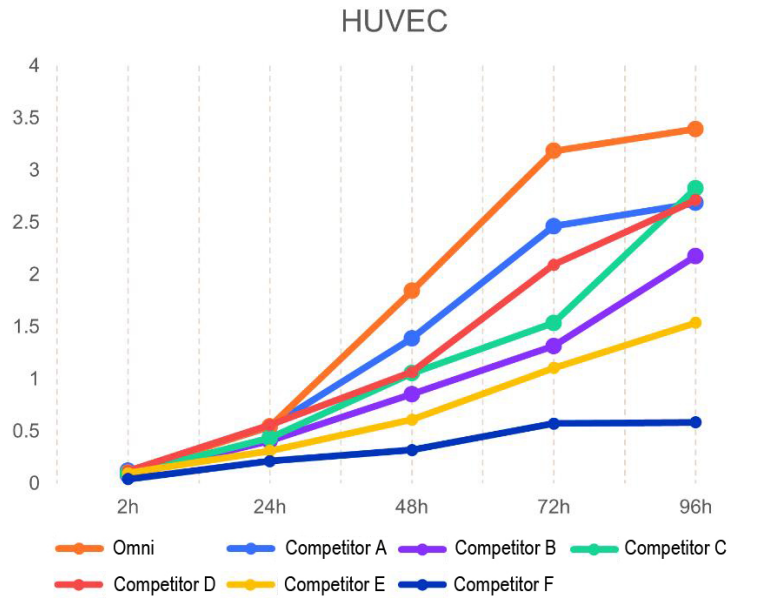
This medium is suitable for the isolation and culture of various human and rodent endothelial cells, including but not limited to human umbilical vein endothelial cells (HUVEC), human retinal microvascular endothelial cells (HRVEC), human glomerular endothelial cells (HRGEC), human brain microvascular endothelial cells (HBMEC), as well as the rat brain microvascular endothelial cell line (Bend.3), human brain microvascular endothelial cell line (hCMEC/D3), and others.

### Composition Table

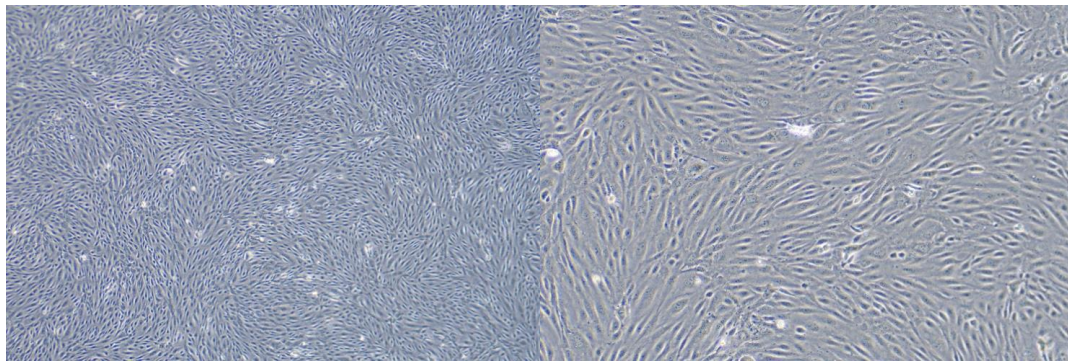
Component	Volume	Ratio	Storage Condition
Basic Medium	500ml	100	2 - 8°C
Fetal Bovine Serum (FBS)	25ml	5%	-20°C
Endothelial Cell Growth Factor (ECGS)	5ml	1%	-20°C
Penicillin/Streptomycin Solution (P/S)	5ml	1%	-20°C

## Product Performance - Key Parameters Surpass Competitors

Compared with other competitors' products, Omni ECM has stronger pro - proliferative ability, and the final harvested cell yield is significantly increased. It supports ultra - low initial density culture.



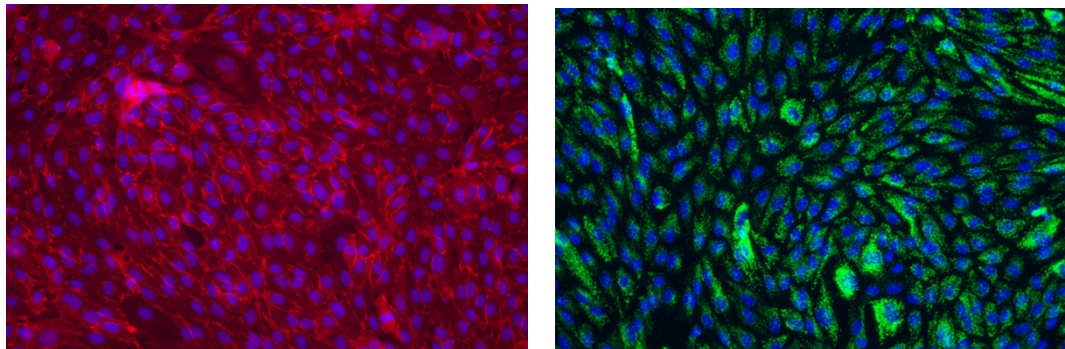
HUVEC (P2) cells maintain good morphology when cultured with Omni ECM.



40X

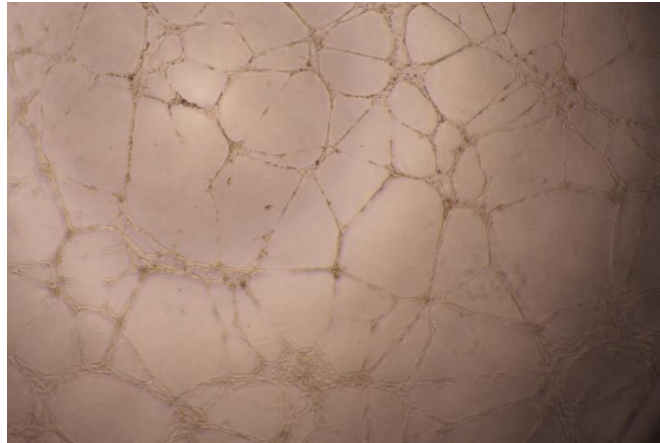
100X

Expression of cell markers in HUVEC (P2) cells cultured with Omni ECM.



Immunofluorescence results of HUVEC (P2) - left: CD31 (red) + DAPI (blue) (200X), right: VWF(green) + DAPI (blue) (200X)

HUVEC (P2) cells cultured with Omni ECM maintain good vascular formation ability.



HUVEC (P2) cells were seeded at 10,000 cells/well in 96 - well plates pre - coated with Matrigel and photographed after 10h (40X).