



Catalog: OM122680

Scan to get more validated information



Rabbit anti-AXL (Phospho-Tyr691) polyclonal antibody

Catalog: OM122680

☐ 20ul ☐ 50ul ☐ 100ul

Product profile

Product name	Rabbit anti-AXL (Phospho-Tyr691) polyclonal antibody
Antibody Type	Primary Antibodies
Immunogen	The antiserum was produced against synthesized peptide derived from human AXL around the phosphorylation site of Tyr691.
Modification	p-Tyr691

Key Feature

Clonality	Polyclonal
Host Species	Rabbit
Tested Application	WB IHC ELISA
	WB: 1:500~1:1000 IHC: 1:50~1:100 ELISA: 1:20000
Species Reactivity	Human Mouse Rat
Concentration	1mg/ml
Purification	Affinity purified

Target Information

Gene Symbol	AXL
Gene Synonyms	Adhesion-related kinase ARK AXL oncogene kinase AXL Tyrosine-protein kinase receptor UFO precursor UFO

Database Links

Entrez Gene	558
Unigene	590970

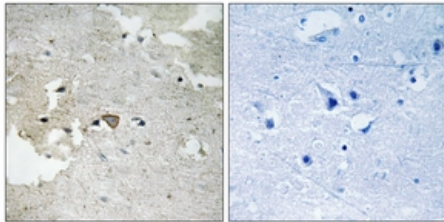
OMIM

109135

SwissProt ID

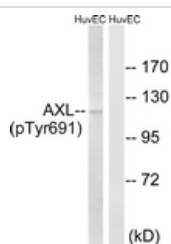
P30530

Application



Immunohistochemical

Immunohistochemistry analysis of paraffin-embedded human brain, using AXL (Phospho-Tyr691) Antibody. The picture on the right is treated with the synthesized peptide.



Western blot

Western blot analysis of extracts from HuvEc cells treated with EGF 200ng/ml 15', using AXL (Phospho-Tyr691) Antibody. The lane on the right is treated with the synthesized peptide

Application Notes

WB:1:500~1:1000

IHC:1:50~1:100

ELISA:1:20000

Additional Information

Form

Liquid

Storage Instructions

store at -20°C. Avoid repeated freeze / thaw cycles

Storage Buffer

Rabbit IgG in phosphate buffered saline (without Mg²⁺ and Ca²⁺), pH 7.4, 150mM NaCl, 0.02% sodium azide and 50% glycerol.

OmnimAbs.com

order@Omnimabs.com

506 N. GARFIELD AVE #210 ALHAMBRA, CA 91801

This product is for research use only and is not approved for use in humans or in clinical diagnosis. Primary Antibodies are guaranteed for 1 year from date of receipt