



Catalog: OM213727

Scan to get more validated information



MIF Antibody (C-term)

Catalog: OM213727

☐ 20ul ☐ 50ul ☐ 100ul

Product profile

Product name	MIF Antibody (C-term)
Antibody Type	Primary Antibodies

Key Feature

Clonality	Polyclonal
Isotype	Ig
Host Species	Rabbit
Tested Application	<div>IFWBFC</div>
	IF:1:10~50 WB
Species Reactivity	<div>Human</div>
Concentration	1mg/ml

Target Information

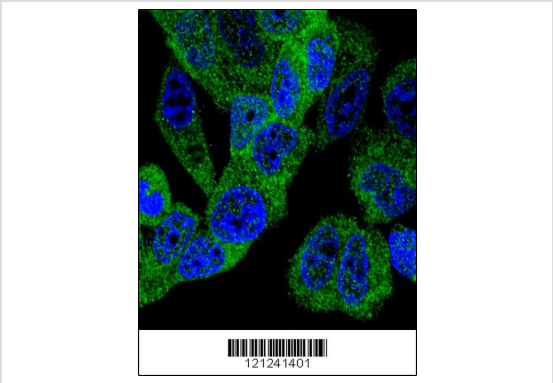
Gene Synonyms	GLIF MMIF
Alternative Names	MIF GLIF MMIF Macrophage migration inhibitory factor Glycosylation-inhibiting factor L-dopachrome isomerase L-dopachrome tautomerase Phenylpyruvate tautomerase
Molecular Weight(MW)	12476 Da
Function	Pro-inflammatory cytokine. Involved in the innate immune response to bacterial pathogens. The expression of MIF at sites of inflammation suggests a role as mediator in regulating the function of macrophages in host defense. Counteracts the anti- inflammatory activity of glucocorticoids. Has phenylpyruvate tautomerase and dopachrome tautomerase activity (in vitro), but the physiological substrate is not known. It is not clear whether the tautomerase activity has any physiological relevance, and whether it is important for cytokine activity
Tissue Specificity	This MIF antibody is generated from rabbits immunized with a KLH conjugated synthetic peptide between 80-110 amino acids from the C-terminal region of human MIF.

Cellular Localization	Secreted. Cytoplasm. Note=Does not have a cleavable signal sequence and is secreted via a specialized, non- classical pathway. Secreted by macrophages upon stimulation by bacterial lipopolysaccharide (LPS), or by M.tuberculosis antigens
------------------------------	--

Database Links

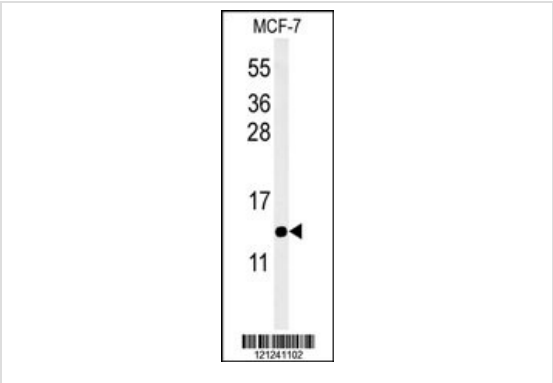
Entrez Gene	4282
-------------	------

Application



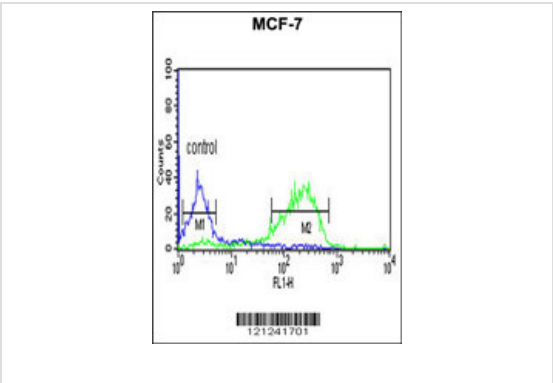
Application

Confocal immunofluorescent analysis of MIF Antibody (C-term) with MCF-7 cell followed by Alexa Fluor® 488-conjugated goat anti-rabbit IgG (green). DAPI was used to stain the cell nuclear (blue).



Application

Western blot analysis of MIF Antibody (C-term) in MCF-7 cell line lysates (35ug/lane).MIF (arrow) was detected using the purified Pab.



Application Notes	IF:1:10~50 WB
--------------------------	---------------

Additional Information

Form	Liquid
-------------	--------

Storage Instructions	For short-term storage, store at 4° C. For long-term storage, aliquot and store at -20°C or below. Avoid multiple freeze-thaw cycles.
-----------------------------	---

Storage Buffer	Purified polyclonal antibody supplied in PBS with 0.09% (W/V) sodium azide. This antibody is purified through a protein A column, followed by peptide affinity purification.
-----------------------	--

order@Omnimabs.com
506 N. GARFIELD AVE #210 ALHAMBRA, CA 91801
This product is for research use only and is not approved for use in humans or in clinical diagnosis.Primary Antibodies are guaranteed for 1 year from date of receipt
