



Catalog: OM118342

Scan to get more validated information



Rabbit anti-CYP24A1 polyclonal antibody - C-terminal region

Catalog: OM118342

☐ 20ul ☐ 50ul ☐ 100ul

Product profile

Product name	Rabbit anti-CYP24A1 polyclonal antibody - C-terminal region
Antibody Type	Primary Antibodies
Immunogen	The immunogen for anti-CYP24A1 antibody: synthetic peptide directed towards the C terminal of human CYP24A1
Modification	Unmodification

Key Feature

Clonality	Polyclonal
Isotype	IgG
Host Species	Rabbit
Tested Application	WB WB: 1:500~1:2000 Notes: Optimal dilutions/concentrations should be determined by the researcher.
Species Reactivity	Dog Human Mouse Pig
Concentration	1mg/ml
Purification	Affinity purified

Target Information

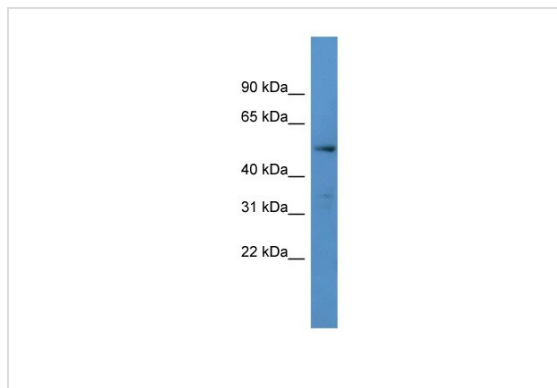
Gene Symbol	CYP24A1
Gene Synonyms	CP24 CYP24 MGC126273 MGC126274 P450-CC24 HCAI
Gene Full Name	Cytochrome P450, family 24, subfamily A, polypeptide 1
Gene Summary	This gene encodes a member of the cytochrome P450 superfamily of enzymes. The cytochrome P450 proteins are monooxygenases which catalyze many reactions involved in drug metabolism and synthesis of cholesterol, steroids and other lipids. This mitochondrial protein initiates the degradation of 1,25-dihydroxyvitamin D3, the physiologically active form of vitamin D3, by hydroxylation of the side chain. In regulating the level of vitamin D3, this enzyme plays a role in calcium homeostasis and the vitamin D endocrine system. Alternatively spliced transcript variants encoding different isoforms have been found for this gene.

Alternative Names	CP24
	CYP24
	MGC126273
	MGC126274
	P450-CC24
	HCAI
Molecular Weight(MW)	55kDa
Sequence	514 amino acids

Database Links

Entrez Gene	1591
SwissProt ID	Q07973
Protein Accession	NP_000773

Application



Western blot

0.2-1 ug/mlELISA Titer: 1:62500Positive Control: MCF7 cell lysate

Application Notes	WB: 1:500~1:2000
	Notes: Optimal dilutions/concentrations should be determined by the researcher.

Additional Information

Form	Liquid
Storage Instructions	Aliquot and store at -20°C. Avoid repeated freeze / thaw cycles
Storage Buffer	phosphate buffered saline , pH 7.4, 150mM NaCl, 0.02% sodium azide and 50% glycerol.

OmnimAbs.com

order@Omnimabs.com

506 N. GARFIELD AVE #210 ALHAMBRA, CA 91801

This product is for research use only and is not approved for use in humans or in clinical diagnosis. Primary Antibodies are guaranteed for 1 year from date of receipt