



Catalog: OM118281

Scan to get more validated information



# Rabbit anti-COL1A1 polyclonal antibody - C-terminal region

Catalog: OM118281

☐ 20ul ☐ 50ul ☐ 100ul

## Product profile

Product name	Rabbit anti-COL1A1 polyclonal antibody - C-terminal region
Antibody Type	Primary Antibodies
Immunogen	The immunogen for anti-COL1A1 antibody: synthetic peptide directed towards the C terminal of human COL1A1
Modification	Unmodification

## Key Feature

Clonality	Polyclonal
Isotype	IgG
Host Species	Rabbit
Tested Application	<b>WB</b>  WB: 1:500~1:2000 Notes: Optimal dilutions/concentrations should be determined by the researcher.
Species Reactivity	<b>Bovine</b> <b>Guinea Pig</b> <b>Horse</b> <b>Human</b> <b>Mouse</b> <b>Rat</b>
Concentration	1mg/ml
Purification	Affinity purified

## Target Information

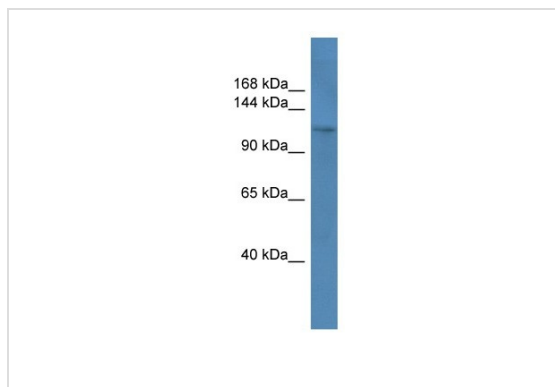
Gene Symbol	<b>COL1A1</b>
Gene Synonyms	OI4
Gene Full Name	Collagen, type I, alpha 1
Gene Summary	This gene encodes the pro-alpha1 chains of type I collagen whose triple helix comprises two alpha1 chains and one alpha2 chain. Type I is a fibril-forming collagen found in most connective tissues and is abundant in bone, cornea, dermis and tendon. Mutations in this gene are associated with osteogenesis imperfecta types I-IV, Ehlers-Danlos syndrome type VIIA, Ehlers-Danlos syndrome Classical type, Caffey Disease and idiopathic osteoporosis. Reciprocal translocations between chromosomes 17 and 22, where this gene and the gene for platelet-derived growth factor beta are located, are associated with a particular type of skin tumor called dermatofibrosarcoma protuberans, resulting from unregulated expression of the growth factor. Two transcripts, resulting from the use of alternate polyadenylation signals, have been identified for this gene.
Alternative Names	OI4

<b>Molecular Weight(MW)</b>	137kDa
<b>Sequence</b>	1464 amino acids

## Database Links

<b>Entrez Gene</b>	1277
<b>SwissProt ID</b>	P02452
<b>Protein Accession</b>	NP_000079

## Application



### Western blot

0.2-1 ug/ml ELISA Titer: 1:62500 Positive Control: Human brain

<b>Application Notes</b>	WB:1:500~1:2000 <b>Notes:</b> Optimal dilutions/concentrations should be determined by the researcher.
--------------------------	---

## Additional Information

<b>Form</b>	Liquid
<b>Storage Instructions</b>	Aliquot and store at -20°C. Avoid repeated freeze / thaw cycles
<b>Storage Buffer</b>	phosphate buffered saline , pH 7.4, 150mM NaCl, 0.02% sodium azide and 50% glycerol.

# OmnimAbs.com

order@Omnimabs.com

506 N. GARFIELD AVE #210 ALHAMBRA, CA 91801

This product is for research use only and is not approved for use in humans or in clinical diagnosis. Primary Antibodies are guaranteed for 1 year from date of receipt