



Catalog: OM105337

Scan to get more validated information



Rabbit anti-TCF7 polyclonal antibody - middle region

Catalog: OM105337

☐ 20ul ☐ 50ul ☐ 100ul

Product profile

Product name	Rabbit anti-TCF7 polyclonal antibody - middle region
Antibody Type	Primary Antibodies
Immunogen	The immunogen for anti-TCF7 antibody: synthetic peptide directed towards the middle region of human TCF7
Modification	Unmodification

Key Feature

Clonality	Polyclonal
Isotype	IgG
Host Species	Rabbit
Tested Application	WB WB: 1:500~1:2000 Notes: Optimal dilutions/concentrations should be determined by the researcher.
Species Reactivity	Human
Concentration	1mg/ml
Purification	Affinity purified

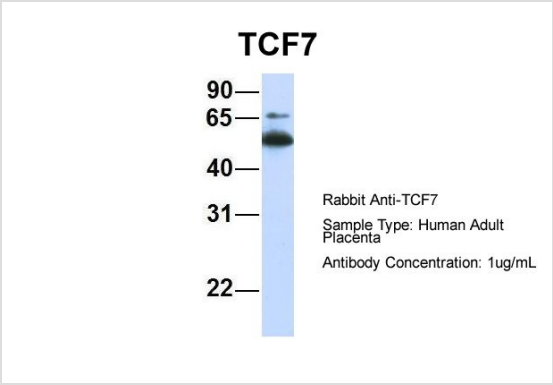
Target Information

Gene Symbol	TCF7
Gene Synonyms	MGC47735 TCF-1
Gene Full Name	Transcription factor 7 (T-cell specific, HMG-box)
Gene Summary	The T-cell-specific transcription factor TCF7 activates genes involved in immune regulation and is a candidate locus for genetic susceptibility to type 1 diabetes.
Alternative Names	MGC47735 TCF-1
Molecular Weight(MW)	30kDa
Sequence	269 amino acids

Database Links

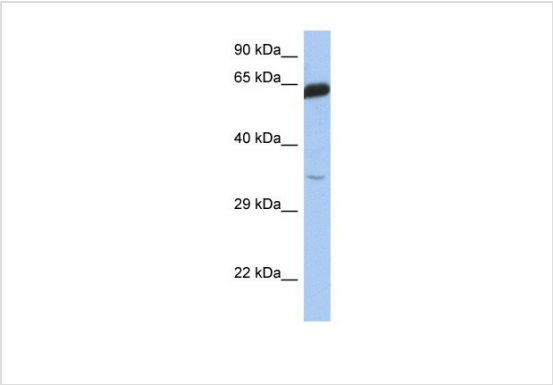
Entrez Gene	6932
SwissProt ID	P36402-2
Protein Accession	NP_963964

Application



Western blot

Host: Rabbit Target Name: CHAD Sample Tissue: Human Adult Placenta
Antibody Dilution: 1.0ug/ml



Western blot

0.2-1 ug/mlELISA Titer: 1:62500Positive Control: Human Small Intestine

Application Notes

WB:1:500~1:2000
Notes:Optimal dilutions/concentrations should be determined by the researcher.

Additional Information

Form	Liquid
Storage Instructions	Aliquot and store at -20°C. Avoid repeated freeze / thaw cycles
Storage Buffer	phosphate buffered saline , pH 7.4, 150mM NaCl, 0.02% sodium azide and 50% glycerol.

OmnimAbs.com