



Catalog: OM278013

Scan to get more validated information



EPAS1 Antibody

Catalog: OM278013

☐ 20ul ☐ 50ul ☐ 100ul

Product profile

Product name	EPAS1 Antibody
Antibody Type	Primary Antibodies
Product description	This gene encodes a transcription factor involved in the induction of genes regulated by oxygen, which is induced as oxygen levels fall. The encoded protein contains a basic-helix-loop-helix domain protein dimerization domain as well as a domain found in proteins in signal transduction pathways which respond to oxygen levels. Mutations in this gene are associated with erythrocytosis familial type 4.1) Bailey, S.D., et al. Diabetes Care 33(10):2250-2253(2010)
Immunogen	This EPAS1 antibody is generated from rabbits immunized with a KLH conjugated synthetic peptide between 577-605 amino acids from the C-terminal region of human EPAS1.

Key Feature

Clonality	Polyclonal
Isotype	Ig
Host Species	Rabbit
Tested Application	WB
For WB starting dilution is: 1:1000:	
Species Reactivity	Human
Concentration	1mg/ml
Purification	Affinity purified

Target Information

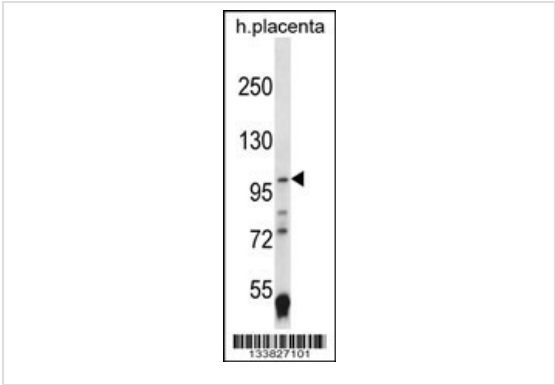
Gene Symbol	EPAS1
Alternative Names	Endothelial PAS domain-containing protein 1 EPAS-1 Basic-helix-loop-helix-PAS protein MOP2 Class E basic helix-loop-helix protein 73 bHLHe73 HIF-1-alpha-like factor HLF Hypoxia-inducible factor 2-alpha HIF-2-alpha HIF2-alpha Member of PAS protein

Molecular Weight(MW) 96 kDa

Database Links

Entrez Gene	2034
Protein Accession	Q99814

Application



Application
Western blot analysis in human placenta tissue lysates (35ug/lane).

Application Notes For WB starting dilution is: 1:1000:

Additional Information

Form	Liquid
Storage Instructions	Store at 4°C for three months and -20°C, stable for up to one year. As with all antibodies care should be taken to avoid repeated freeze thaw cycles. Antibodies should not be exposed to prolonged high temperatures.
Storage Buffer	Supplied in PBS with 0.09% (W/V) sodium azide.

OmnimAbs.com

order@Omnimabs.com
506 N. GARFIELD AVE #210 ALHAMBRA, CA 91801
This product is for research use only and is not approved for use in humans or in clinical diagnosis.Primary Antibodies are guaranteed for 1 year from date of receipt