



Catalog: OM278026

Scan to get more validated information



EpCAM Antibody

Catalog: OM278026

☐ 20ul ☐ 50ul ☐ 100ul

Product profile

Product name	EpCAM Antibody
Antibody Type	Primary Antibodies
Product description	EpCAM is a carcinoma-associated antigen and is a member of a family that includes at least two type I membrane proteins. This antigen is expressed on most normal epithelial cells and gastrointestinal carcinomas and functions as a homotypic calcium-independent cell adhesion molecule. The antigen is being used as a target for immunotherapy treatment of human carcinomas.1) Lu, T.Y., et al. J. Biol. Chem. 285(12):8719-8732(2010)
Immunogen	This EpCAM antibody is generated from rabbits immunized with a KLH conjugated synthetic peptide between 57-85 amino acids from the N-terminal region of human EpCAM.

Key Feature

Clonality	Polyclonal
Isotype	Ig
Host Species	Rabbit
Tested Application	FACS WB
For WB starting dilution is: 1:1000 For FACS starting dilution is: 1:10~50:	
Species Reactivity	Human
Concentration	1mg/ml
Purification	Affinity purified

Target Information

Gene Symbol	EPCAM
-------------	--------------

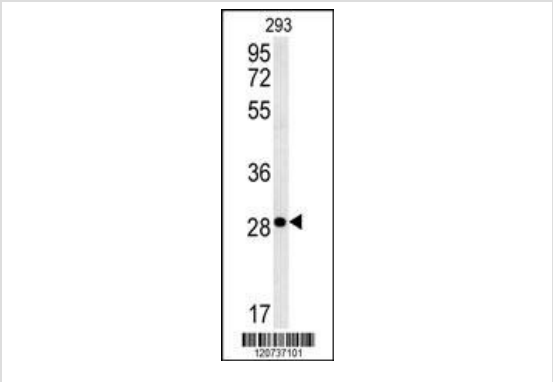
Alternative Names	Epithelial cell adhesion molecule
	Ep-CAM
	Adenocarcinoma-associated antigen
	Cell surface glycoprotein Trop-1
	Epithelial cell surface antigen
	Epithelial glycoprotein
	EGP
	Epithelial glycoprotein 314
	EGP314
	hEGP314
	KS 1/4 antigen
	KSA
	Major gastroin

Molecular Weight(MW)
35 kDa

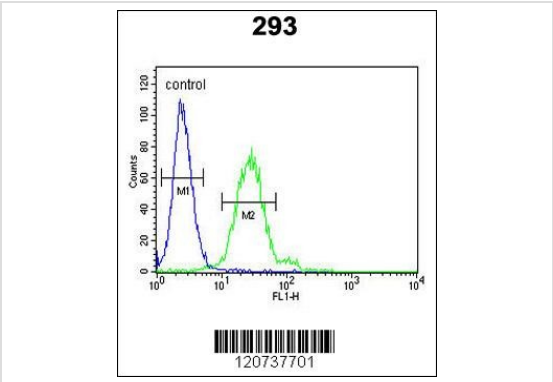
Database Links

Entrez Gene	4072
Protein Accession	P16422

Application



Application
Western blot analysis in 293 cell line lysates (35ug/lane).



Application
Flow cytometric analysis of 293 cells (right histogram) compared to a negative control cell (left histogram).FITC-conjugated goat-anti-rabbit secondary antibodies were used for the analysis.

Application Notes
For WB starting dilution is: 1:1000 For FACS starting dilution is: 1:10~50:

Additional Information

Form
Liquid

Storage Instructions
Store at 4°C for three months and -20°C, stable for up to one year. As with all antibodies care should be taken to avoid repeated freeze thaw cycles. Antibodies should not be exposed to prolonged high temperatures.

Storage Buffer

Supplied in PBS with 0.09% (W/V) sodium azide.

OmnimAbs.com

order@Omnimabs.com
506 N. GARFIELD AVE #210 ALHAMBRA, CA 91801
This product is for research use only and is not approved for use in humans or in clinical diagnosis.Primary Antibodies are guaranteed for 1 year from date of receipt
