



Catalog: OM231062

Scan to get more validated information



DCT Antibody (N-term)

Catalog: OM231062

☐ 20ul ☐ 50ul ☐ 100ul

Product profile

Product name	DCT Antibody (N-term)
Antibody Type	Primary Antibodies

Key Feature

Clonality	Polyclonal
Isotype	Ig
Host Species	Rabbit
Tested Application	<div>WB IHC FC</div> WB:1:100~500 IHC
Species Reactivity	<div>Human</div>
Concentration	1mg/ml

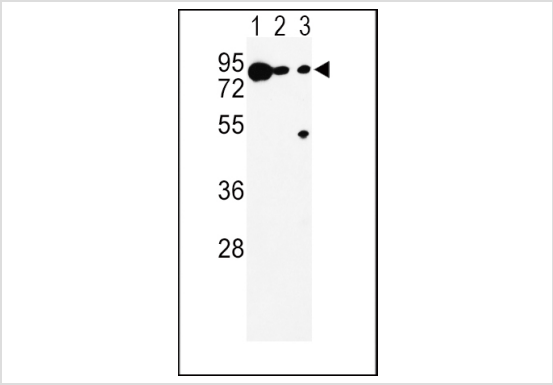
Target Information

Gene Synonyms	TYRP2
Alternative Names	DCT TYRP2 L-dopachrome tautomerase L-dopachrome Delta-isomerase Tyrosinase-related protein 2
Molecular Weight(MW)	59145 Da
Function	Involved in regulating eumelanin and phaeomelanin levels
Tissue Specificity	This DCT antibody is generated from rabbits immunized with a KLH conjugated synthetic peptide between 68~98 amino acids from the N-term region of human DCT.
Cellular Localization	Melanosome membrane; Single-pass type I membrane protein

Database Links

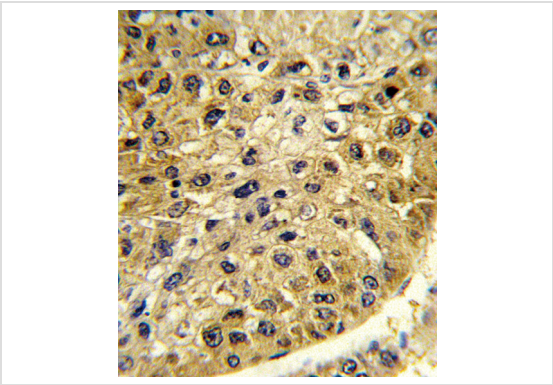
Entrez Gene [1638](#)

Application



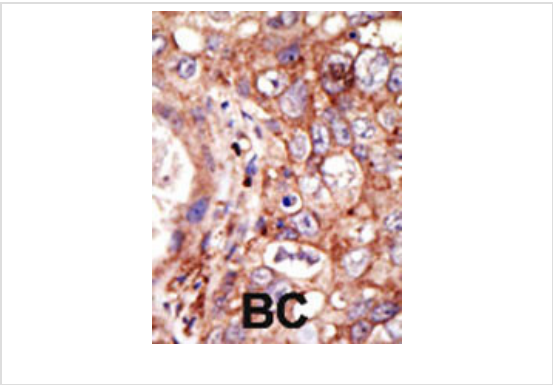
Application

Western blot analysis of DCT Antibody (N-term) in K562(lane 1), A375(lane 2), Ramos(lane 3) cell line lysates (35ug/lane). DCT (arrow) was detected using the purified Pab.



Application

Formalin-fixed and paraffin-embedded human hepatocarcinoma reacted with DCT Antibody (N-term), which was peroxidase-conjugated to the secondary antibody, followed by DAB staining. This data demonstrates the use of this antibody for immunohistochemistry; clinical relevance has not been evaluated.



Application

DCT Antibody (N-term) flow cytometry analysis of Ramos cells (bottom histogram) compared to a negative control cell (top histogram).FITC-conjugated goat-anti-rabbit secondary antibodies were used for the analysis.

Application Notes

WB:1:100~500 IHC

Additional Information

Form	Liquid
Storage Instructions	For short-term storage, store at 4° C. For long-term storage, aliquot and store at -20°C or below. Avoid multiple freeze-thaw cycles.
Storage Buffer	Purified polyclonal antibody supplied in PBS with 0.09% (W/V) sodium azide. This antibody is purified through a protein A column, followed by peptide affinity purification.

OmnimAbs.com