



Catalog: OM291581

Scan to get more validated information



SLC7A5 Antibody

Catalog: OM291581

☐ 20ul ☐ 50ul ☐ 100ul

Product profile

Product name	SLC7A5 Antibody
Antibody Type	Primary Antibodies
Immunogen	SLC7A5 antibody was raised against a peptide located in the N-Terminal region of SLC7A5 (Human).

Key Feature

Clonality	Polyclonal
Host Species	Rabbit
Tested Application	IHC
SLC7A5 antibody can be used in ELISA, Western Blot, and immunohistochemistry starting at 5 µg/mL.	
Species Reactivity	Dog Gibbon Gorilla Human Monkey Rabbit
Concentration	1mg/ml
Purification	Affinity purified

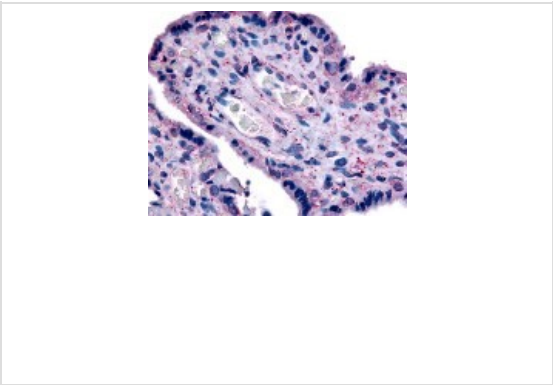
Target Information

Gene Symbol	SLC7A5
Alternative Names	SLC7A5
	4F2 LC
	4F2 light chain
	4F2LC
	CD98
	CD98 light chain
	CD98LC
	D16S469E
	Integral membrane protein E16
	Membrane protein E16
	MPE16
	LAT1
	E16
	HLAT1
	TA1
Tissue Specificity	BLAST analysis of the peptide immunogen showed no homology with other human proteins.

Database Links

Entrez Gene	8140
Protein Accession	Q01650

Application



Application

Immunohistochemistry staining of SLC7A5 in placenta tissue using SLC7A5 Antibody.

Application Notes	SLC7A5 antibody can be used in ELISA, Western Blot, and immunohistochemistry starting at 5 µg/mL.
-------------------	---

Additional Information

Form	Liquid
Storage Instructions	SLC7A5 antibody should be stored long term (months) at -80 °C and short term (days) at 4 °C. As with all antibodies avoid freeze/thaw cycles.
Storage Buffer	PBS, 0.1% sodium azide.

OmnimAbs.com

order@Omnimabs.com
506 N. GARFIELD AVE #210 ALHAMBRA, CA 91801
This product is for research use only and is not approved for use in humans or in clinical diagnosis.Primary Antibodies are guaranteed for 1 year from date of receipt