



Catalog: OM110203

Scan to get more validated information



Rabbit anti-LARP1 polyclonal antibody - N-terminal region

Catalog: OM110203

☐ 20ul ☐ 50ul ☐ 100ul

Product profile

Product name	Rabbit anti-LARP1 polyclonal antibody - N-terminal region
Antibody Type	Primary Antibodies
Immunogen	The immunogen for anti-LARP1 antibody: synthetic peptide directed towards the N terminal of human LARP1
Modification	Unmodification

Key Feature

Clonality	Polyclonal
Isotype	IgG
Host Species	Rabbit
Tested Application	WB WB: 1:500~1:2000 Notes: Optimal dilutions/concentrations should be determined by the researcher.
Species Reactivity	Bovine Dog Guinea Pig Horse Human Mouse Pig Rabbit Rat
Concentration	1mg/ml
Purification	Affinity purified

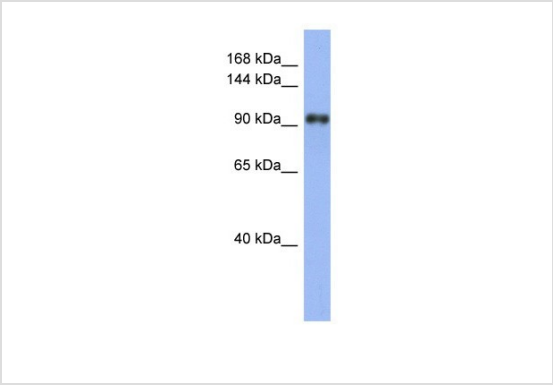
Target Information

Gene Symbol	LARP1
Gene Synonyms	KIAA0731 LARP MGC19556
Gene Full Name	La ribonucleoprotein domain family, member 1
Gene Summary	LARP1 belongs to the LARP family and it contains 1 HTH La-type RNA-binding domain. The exact function of LARP1 remains unknown.
Alternative Names	KIAA0731 LARP MGC19556
Molecular Weight(MW)	116kDa
Sequence	1019 amino acids

Database Links

Entrez Gene	23367
SwissProt ID	Q6PKG0-3
Protein Accession	NP_056130

Application



Western blot

0.2-1 ug/mlELISA Titer: 1:312500Positive Control: Human Stomach

Application Notes

WB: 1:500~1:2000

Notes: Optimal dilutions/concentrations should be determined by the researcher.

Additional Information

Form	Liquid
Storage Instructions	Aliquot and store at -20°C. Avoid repeated freeze / thaw cycles
Storage Buffer	phosphate buffered saline , pH 7.4, 150mM NaCl, 0.02% sodium azide and 50% glycerol.

OmnimAbs.com

order@Omnimabs.com
506 N. GARFIELD AVE #210 ALHAMBRA, CA 91801
This product is for research use only and is not approved for use in humans or in clinical diagnosis.Primary Antibodies are guaranteed for 1 year from date of receipt