



Catalog: OM110233

Scan to get more validated information



# RBM11 antibody - middle region

Catalog: OM110233

☐ 20ul ☐ 50ul ☐ 100ul

## Product profile

|               |  |
|---------------|--|
| Product name  | RBM11 antibody - middle region   |
| Antibody Type | Primary Antibodies   |
| Immunogen     | The immunogen for anti-RBM11 antibody: synthetic peptide directed towards the middle region of human RBM11 |

## Key Feature

|                    |                                   |
|--------------------|-----------------------------------|
| Clonality          | Polyclonal                        |
| Isotype            | IgG                               |
| Host Species       | Rabbit                            |
| Tested Application | WB                                |
| Species Reactivity | Bovine,Dog,Guinea Pig,Horse,Human |
| Concentration      | 1mg/ml                            |
| Purification       | Affinity purified                 |

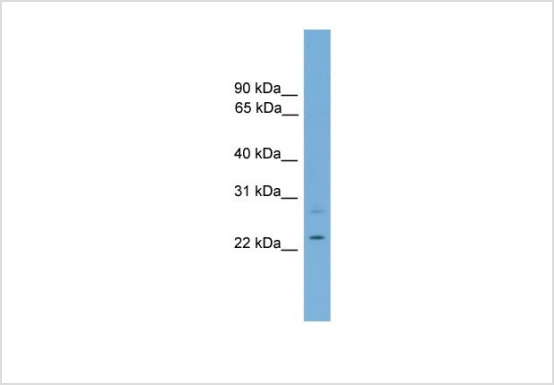
## Target Information

|                      |  |
|----------------------|--|
| Gene Symbol          | RBM11  |
| Gene Synonyms        | -  |
| Gene Full Name       | RNA binding motif protein 11                 |
| Gene Summary         | The function of the protein remains unknown. |
| Molecular Weight(MW) | 19kDa  |
| Sequence             | 167 amino acids                              |

## Database Links

|                   |           |
|-------------------|-----------|
| Entrez Gene       | 54033     |
| SwissProt ID      | P57052    |
| Protein Accession | NP_658983 |

## Application



**Western blot**

0.2-1 ug/ml  
ELISA Titer: 1:62500  
Positive Control: 721\_B cell lysate

**Additional Information**

|                      |  |
|----------------------|--|
| Form                 | Liquid   |
| Storage Instructions | Aliquot and store at -20°C. Avoid repeated freeze / thaw cycles                      |
| Storage Buffer       | phosphate buffered saline , pH 7.4, 150mM NaCl, 0.02% sodium azide and 50% glycerol. |

OmnimAbs.com

order@Omnimabs.com  
506 N. GARFIELD AVE #210 ALHAMBRA, CA 91801  
This product is for research use only and is not approved for use in humans or in clinical diagnosis.Primary Antibodies are guaranteed for 1 year from date of receipt