



Catalog: OM119955

Scan to get more validated information



Rabbit anti-GPRC6A polyclonal antibody - C-terminal region

Catalog: OM119955

☐ 20ul ☐ 50ul ☐ 100ul

Product profile

Product name	Rabbit anti-GPRC6A polyclonal antibody - C-terminal region
Antibody Type	Primary Antibodies
Modification	Unmodification

Key Feature

Clonality	Polyclonal
Isotype	IgG
Host Species	Rabbit
Tested Application	WB WB:1:500~1:2000 Notes: Optimal dilutions/concentrations should be determined by the researcher.
Species Reactivity	Human
Concentration	1mg/ml
Purification	Affinity purified

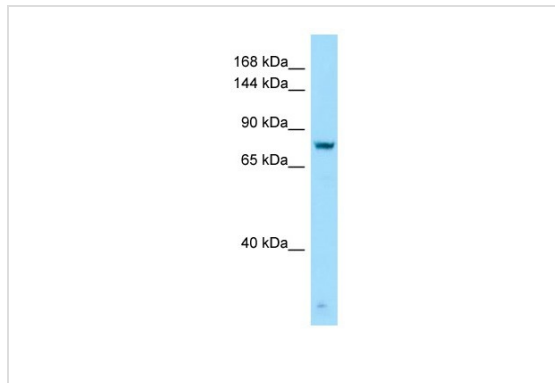
Target Information

Gene Symbol	GPRC6A
Gene Synonyms	GPCR bA86F4.3
Gene Full Name	G protein-coupled receptor, family C, group 6, member A
Gene Summary	Members of family C of the G protein-coupled receptor (GPCR) superfamily, such as GPRC6A, are characterized by an evolutionarily conserved amino acid-sensing motif linked to an intramembranous 7-transmembrane loop region. Several members of GPCR family C, including GPRC6A, also have a long N-terminal domain.
Alternative Names	GPCR bA86F4.3
Molecular Weight(MW)	83kDa
Sequence	751 amino acids

Database Links

Entrez Gene	222545
SwissProt ID	Q5T6X5-2
Protein Accession	AAS13466

Application



Western blot

Titration: 1.0 ug/ml Positive Control: Jurkat Whole Cell

Application Notes

WB: 1:500~1:2000

Notes: Optimal dilutions/concentrations should be determined by the researcher.

Additional Information

Form	Liquid
Storage Instructions	Aliquot and store at -20°C. Avoid repeated freeze / thaw cycles
Storage Buffer	phosphate buffered saline , pH 7.4, 150mM NaCl, 0.02% sodium azide and 50% glycerol.

OmnimAbs.com

order@Omnimabs.com

506 N. GARFIELD AVE #210 ALHAMBRA, CA 91801

This product is for research use only and is not approved for use in humans or in clinical diagnosis. Primary Antibodies are guaranteed for 1 year from date of receipt