



Catalog: OM124263

Scan to get more validated information



Rabbit anti-GSK3 alpha (Phospho-Ser21) polyclonal antibody

Catalog: OM124263

☐ 20ul ☐ 50ul ☐ 100ul

Product profile

Product name	Rabbit anti-GSK3 alpha (Phospho-Ser21) polyclonal antibody
Antibody Type	Primary Antibodies
Immunogen	The antiserum was produced against synthesized peptide derived from human GSK3 alpha around the phosphorylation site of Ser21.
Modification	p-Ser21

Key Feature

Clonality	Polyclonal
Host Species	Rabbit
Tested Application	WB IHC IP ELISA
	WB: 1:500~1:1000 IHC: 1:50~1:100 ELISA: 1:20000
Species Reactivity	Human Mouse Rat
Concentration	1mg/ml
Purification	Affinity purified

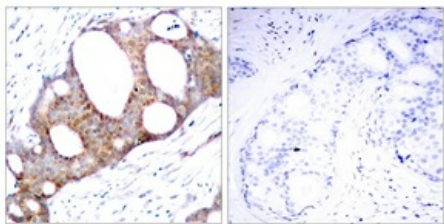
Target Information

Gene Symbol	GSK3A
Gene Synonyms	Factor A GSK-3 alpha GSK3-alpha Glycogen synthase kinase-3 alpha kinase GSK3-alpha

Database Links

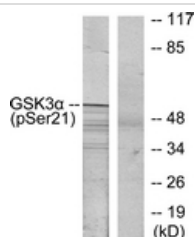
Entrez Gene	2931
Unigene	466829
OMIM	606784

Application



Immunohistochemical

Immunohistochemistry analysis of paraffin-embedded human breast carcinoma, using GSK3 alpha (Phospho-Ser21) Antibody. The picture on the right is treated with the synthesized peptide.



Western blot

Western blot analysis of extracts from ovary cancer, using GSK3 alpha (Phospho-Ser21) Antibody. The lane on the right is treated with the synthesized peptide

Application Notes

WB: 1:500~1:1000

IHC: 1:50~1:100

ELISA: 1:20000

Additional Information

Form

Liquid

Storage Instructions

store at -20°C. Avoid repeated freeze / thaw cycles

Storage Buffer

Rabbit IgG in phosphate buffered saline (without Mg²⁺ and Ca²⁺), pH 7.4, 150mM NaCl, 0.02% sodium azide and 50% glycerol.

OmnimAbs.com

order@Omnimabs.com

506 N. GARFIELD AVE #210 ALHAMBRA, CA 91801

This product is for research use only and is not approved for use in humans or in clinical diagnosis. Primary Antibodies are guaranteed for 1 year from date of receipt