



Catalog: OM643227

Scan to get more validated information



# COL1A2 Recombinant Rabbit Monoclonal Antibody

Catalog: OM643227

☐ 20ul ☐ 50ul ☐ 100ul

## Product profile

Product name	COL1A2 Recombinant Rabbit Monoclonal Antibody
Antibody Type	Primary Antibodies
Immunogen	Recombinant protein within human COL1A2 aa 1,081-1,366.
Modification	Unmodification

## Key Feature

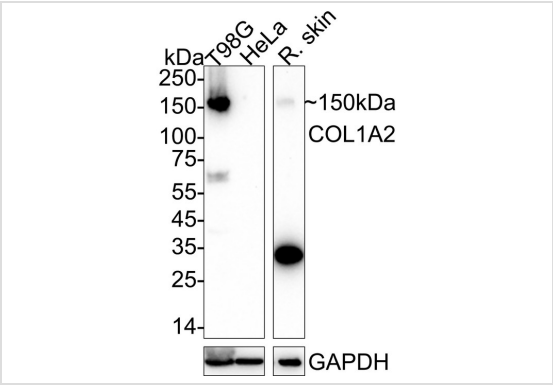
Clonality	Monoclonal
Isotype	IgG
Host Species	Rabbit
Tested Application	<b>FC</b> <b>ICC/IF</b> <b>WB</b>  <b>WB:</b> 1:2000 <b>ICC:</b> 1:100 <b>FC:</b> 1:1000
Species Reactivity	<b>Human</b> <b>Rat</b>
Concentration	1mg/ml
Purification	Protein A

## Target Information

Gene Symbol	COL1A2
Gene Synonyms	OI4 EDSCV EDSARTH2
Gene Full Name	collagen type I alpha 2 chain
Gene Summary	<p>This gene encodes the pro-alpha2 chain of type I collagen whose triple helix comprises two alpha1 chains and one alpha2 chain. Type I is a fibril-forming collagen found in most connective tissues and is abundant in bone, cornea, dermis and tendon. Mutations in this gene are associated with osteogenesis imperfecta types I-IV, Ehlers-Danlos syndrome type VIIIB, recessive Ehlers-Danlos syndrome Classical type, idiopathic osteoporosis, and atypical Marfan syndrome. Symptoms associated with mutations in this gene, however, tend to be less severe than mutations in the gene for the alpha1 chain of type I collagen (COL1A1) reflecting the different role of alpha2 chains in matrix integrity. Three transcripts, resulting from the use of alternate polyadenylation signals, have been identified for this gene. [provided by R. Dalgleish, Feb 2008]</p>

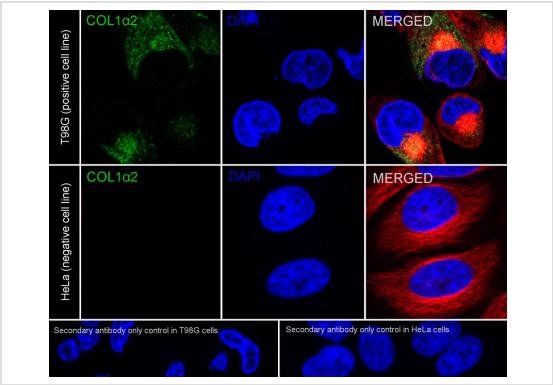
<b>Molecular Weight(MW)</b>	129kDa(Observed band size: 150kDa)
<b>Cellular Localization</b>	Secreted, extracellular space, extracellular matrix.

Application



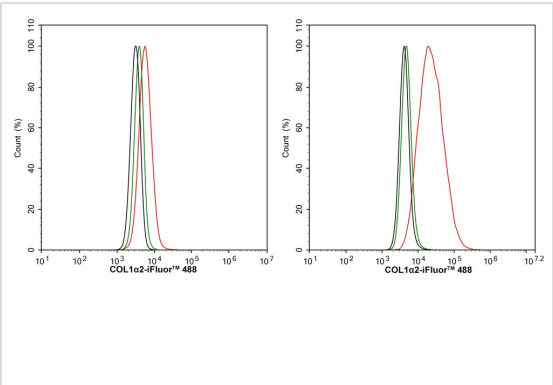
WB

Western blot analysis of COL1A2 on different lysates with Rabbit anti-COL1A2 antibody at 1/2,000 dilution. Lane 1: T98G cell lysate (20 µg/Lane) Lane 2: HeLa cell lysate (negative) (20 µg/Lane) Lane 3: Rat skin tissue lysate (40 µg/Lane) Exposure time: 3 minutes; 4-20% SDS-PAGE gel. Proteins were transferred to a PVDF membrane and blocked with 5% NFDm/TBST for 1 hour at room temperature. The primary antibody at 1/2,000 dilution was used in 5% NFDm/TBST at 4°C overnight. Goat Anti-Rabbit IgG - HRP Secondary Antibody at 1/50,000 dilution was used for 1 hour at room temperature.



ICC/IF

Immunocytochemistry analysis of T98G (positive) and HeLa (negative) labeling COL1A2 with Rabbit anti-COL1A2 antibody at 1/100 dilution. Cells were fixed in 4% paraformaldehyde for 20 minutes at room temperature, permeabilized with 0.1% Triton X-100 in PBS for 5 minutes at room temperature, then blocked with 1% BSA in 10% negative goat serum for 1 hour at room temperature. Cells were then incubated with Rabbit anti-COL1A2 antibody at 1/100 dilution in 1% BSA in PBST overnight at 4°C. Goat Anti-Rabbit IgG H&L (iFluor™ 488) was used as the secondary antibody at 1/1,000 dilution. PBS instead of the primary antibody was used as the secondary antibody only control. Nuclear DNA was labelled in blue with DAPI. Beta tubulin (red) was stained at 1/100 dilution overnight at +4°C. Goat Anti-Mouse IgG H&L (iFluor™ 594) was used as the secondary antibody at 1/1,000 dilution.



FC

Flow cytometric analysis of HeLa (left, negative) and T98G (right, positive) cells labeling COL1A2. Cells were washed twice with cold PBS and resuspend. Then stained with the primary antibody (1/1,000) (red) compared with Rabbit IgG Isotype Control (green). After incubation of the primary antibody at +4°C for an hour, the cells were stained with a iFluor™ 488 conjugate-Goat anti-Rabbit IgG Secondary antibody at 1/1,000 dilution for 30 minutes at +4°C. Unlabelled sample was used as a control (cells without incubation with primary antibody; black).

<b>Application Notes</b>	<b>WB:</b> 1:2000
	<b>ICC:</b> 1:100
	<b>FC:</b> 1:1000

Additional Information

<b>Form</b>	Liquid
<b>Storage Instructions</b>	Store at +4°C after thawing. Aliquot store at -20°C. Avoid repeated freeze / thaw cycles.
<b>Storage Buffer</b>	PBS (pH7.4), 0.1% BSA, 40% Glycerol. Preservative: 0.05% Sodium Azide.

order@Omnimabs.com  
506 N. GARFIELD AVE #210 ALHAMBRA, CA 91801  
This product is for research use only and is not approved for use in humans or in clinical diagnosis.Primary Antibodies are guaranteed for 1 year from date of receipt

---