



Catalog: OM643865

Scan to get more validated information



AMPK alpha 1/2 Recombinant Rabbit Monoclonal Antibody

Catalog: OM643865

☐ 20ul ☐ 50ul ☐ 100ul

Product profile

Product name	AMPK alpha 1/2 Recombinant Rabbit Monoclonal Antibody
Antibody Type	Primary Antibodies
Immunogen	Recombinant protein within human AMPK alpha 2 aa 1-400.
Modification	Unmodification

Key Feature

Clonality	monoclonal
-----------	------------

Isotype	IgG
---------	-----

Host Species	Rabbit
--------------	--------

Tested Application	IHC WB
--------------------	----------------------

WB:1:2000

IHC:1:200-1:1000

Species Reactivity	Human Mouse Rat
--------------------	--------------------------------------

Concentration	1mg/ml
---------------	--------

Purification	Protein A
--------------	-----------

Target Information

Gene Symbol	PRKAA1,PRKAA2
-------------	---------------

Gene Synonyms	AMPK AMPKa1 AMPK alpha 1 AMPK2 AMPKa2 PRKAA
---------------	--

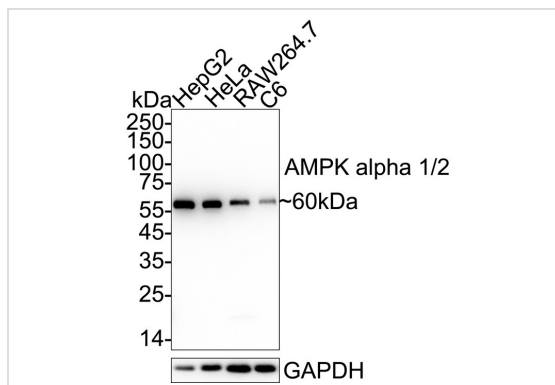
Gene Full Name	protein kinase AMP-activated catalytic subunit alpha 1/2
----------------	--

Gene Summary	The protein encoded by this gene belongs to the ser/thr protein kinase family. It is the catalytic subunit of the 5'-prime-AMP-activated protein kinase (AMPK). AMPK is a cellular energy sensor conserved in all eukaryotic cells. The kinase activity of AMPK is activated by the stimuli that increase the cellular AMP/ATP ratio. AMPK regulates the activities of a number of key metabolic enzymes through phosphorylation. It protects cells from stresses that cause ATP depletion by switching off ATP-consuming biosynthetic pathways. Alternatively spliced transcript variants encoding distinct isoforms have been observed. [provided by RefSeq, Jul 2008]
--------------	--

Molecular Weight(MW) 64/62kDa(Observed band size: 60kDa)

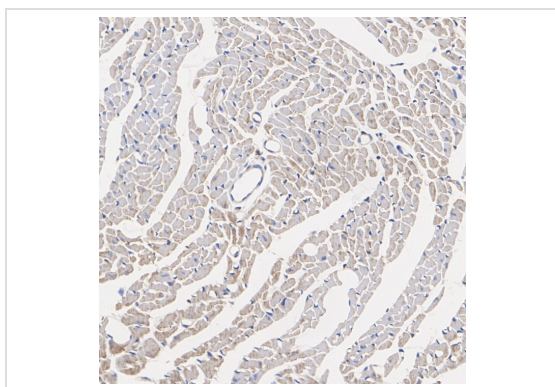
Cellular Localization Cytoplasm, Nucleus.

Application



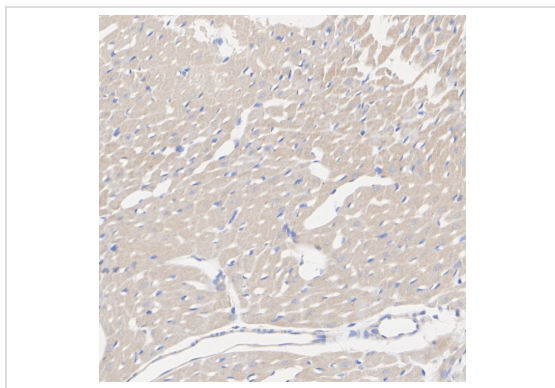
WB

Western blot analysis of AMPK alpha 1/2 on different lysates with Rabbit anti-AMPK alpha 1/2 antibody at 1/2,000 dilution. Lane 1: HepG2 cell lysate (20 µg/Lane), Lane 2: HeLa cell lysate (20 µg/Lane), Lane 3: RAW264.7 cell lysate (20 µg/Lane), Lane 4: C6 cell lysate (20 µg/Lane), Exposure time: 30 seconds; 4-20% SDS-PAGE gel. Proteins were transferred to a PVDF membrane and blocked with 5% NFDm/TBST for 1 hour at room temperature. The primary antibody at 1/2,000 dilution was used in 5% NFDm/TBST at 4°C overnight. Goat Anti-Rabbit IgG - HRP Secondary Antibody at 1/50,000 dilution was used for 1 hour at room temperature.



IHC

Immunohistochemical analysis of paraffin-embedded mouse heart tissue with Rabbit anti-AMPK alpha 1/2 antibody at 1/200 dilution. The section was pre-treated using heat mediated antigen retrieval with Tris-EDTA buffer (pH 9.0) for 20 minutes. The tissues were blocked in 1% BSA for 20 minutes at room temperature, washed with ddH₂O and PBS, and then probed with the primary antibody at 1/200 dilution for 1 hour at room temperature. The detection was performed using an HRP conjugated compact polymer system. DAB was used as the chromogen. Tissues were counterstained with hematoxylin and mounted with DPX.



IHC

Immunohistochemical analysis of paraffin-embedded rat heart tissue with Rabbit anti-AMPK alpha 1/2 antibody at 1/1,000 dilution. The section was pre-treated using heat mediated antigen retrieval with Tris-EDTA buffer (pH 9.0) for 20 minutes. The tissues were blocked in 1% BSA for 20 minutes at room temperature, washed with ddH₂O and PBS, and then probed with the primary antibody at 1/1,000 dilution for 1 hour at room temperature. The detection was performed using an HRP conjugated compact polymer system. DAB was used as the chromogen. Tissues were counterstained with hematoxylin and mounted with DPX.

Application Notes

WB:1:2000

IHC:1:200-1:1000

Additional Information

Form Liquid

Storage Instructions Store at +4°C after thawing. Aliquot store at -20°C or -80°C. Avoid repeated freeze / thaw cycles.

Storage Buffer 1×TBS (pH7.4), 0.05% BSA, 40% Glycerol. Preservative: 0.05% Sodium Azide.

OmnimAbs.com

506 N. GARFIELD AVE #210 ALHAMBRA, CA 91801
This product is for research use only and is not approved for use in humans or in clinical diagnosis.Primary Antibodies are guaranteed for 1 year from date of receipt

