



Catalog: OM643875

Scan to get more validated information



Rbm15 Mouse Monoclonal Antibody

Catalog: OM643875

☐ 50ul ☐ 100ul

Product profile

Product name	Rbm15 Mouse Monoclonal Antibody
Antibody Type	Primary Antibodies
Immunogen	Recombinant protein within human RBM15 aa 450-850.
Modification	Unmodification

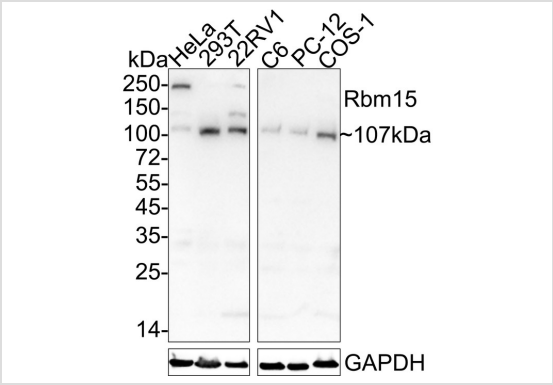
Key Feature

Clonality	monoclonal
Isotype	IgG1
Host Species	Mouse
Tested Application	<div>IHC WB</div> <div>WB:1:1000</div> <div>IHC:1:100</div>
Species Reactivity	<div>Human Monkey Mouse Rat</div>
Concentration	1mg/ml
Purification	Protein A

Target Information

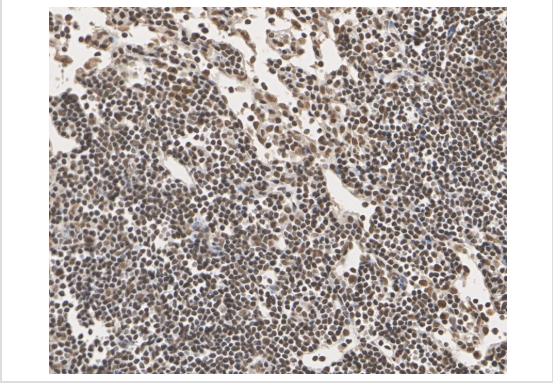
Gene Symbol	RBM15
Gene Synonyms	OTT OTT1 SPEN
Gene Full Name	RNA binding motif protein 15
Gene Summary	Members of the SPEN (Split-end) family of proteins, including RBM15, have repressor function in several signaling pathways and may bind to RNA through interaction with spliceosome components (Hiriart et al., 2005 [PubMed 16129689]).[supplied by OMIM, Feb 2009]
Molecular Weight(MW)	107kDa
Cellular Localization	Nucleus.

Application



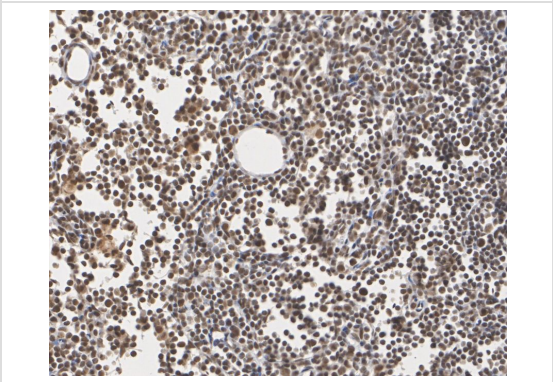
WB

Western blot analysis of Rbm15 on different lysates with Mouse anti-Rbm15 antibody at 1/1,000 dilution. Lane 1: HeLa cell lysate, Lane 2: 293T cell lysate, Lane 3: 22RV1 cell lysate, Lane 4: C6 cell lysate, Lane 5: PC-12 cell lysate, Lane 6: COS-1 cell lysate, Lysates/proteins at 20 µg/Lane. Exposure time: 3 minutes; 4-20% SDS-PAGE gel. Proteins were transferred to a PVDF membrane and blocked with 5% NFDm/TBST for 1 hour at room temperature. The primary antibody at 1/1,000 dilution was used in 5% NFDm/TBST at 4°C overnight. Goat Anti-Mouse IgG - HRP Secondary Antibody at 1/50,000 dilution was used for 1 hour at room temperature.



IHC

Immunohistochemical analysis of paraffin-embedded mouse lymph nodes tissue with Mouse anti-Rbm15 antibody at 1/100 dilution. The section was pre-treated using heat mediated antigen retrieval with sodium citrate buffer (pH 6.0) for 2 minutes. The tissues were blocked in 1% BSA for 20 minutes at room temperature, washed with ddH2O and PBS, and then probed with the primary antibody at 1/100 dilution for 1 hour at room temperature. The detection was performed using an HRP conjugated compact polymer system. DAB was used as the chromogen. Tissues were counterstained with hematoxylin and mounted with DPX



IHC

Immunohistochemical analysis of paraffin-embedded rat lymph nodes tissue with Mouse anti-Rbm15 antibody at 1/100 dilution. The section was pre-treated using heat mediated antigen retrieval with sodium citrate buffer (pH 6.0) for 2 minutes. The tissues were blocked in 1% BSA for 20 minutes at room temperature, washed with ddH2O and PBS, and then probed with the primary antibody at 1/100 dilution for 1 hour at room temperature. The detection was performed using an HRP conjugated compact polymer system. DAB was used as the chromogen. Tissues were counterstained with hematoxylin and mounted with DPX

Application Notes	WB:1:1000
	IHC:1:100

Additional Information

Form	Liquid
Storage Instructions	Store at +4°C after thawing. Aliquot store at -20°C or -80°C. Avoid repeated freeze / thaw cycles.
Storage Buffer	1×TBS (pH7.4), 0.05% BSA, 40% Glycerol. Preservative: 0.05% Sodium Azide.

OmnimAbs.com