



Catalog: OM644038

Scan to get more validated information



PKM Rabbit mAb

Catalog: OM644038

☐ 20ul ☐ 50ul ☐ 100ul

Product profile

Product name	PKM Rabbit mAb
Antibody Type	Primary Antibodies

Key Feature

Clonality	monoclonal
Isotype	IgG
Host Species	Rabbit
Tested Application	<div>ICC/IF IHC WB</div> <div>WB:1:1000-1:5000 IHC:1:200-1:1000 ICC/IF:1:200-1:1000</div>
Species Reactivity	<div>Human Mouse Rat</div>
Concentration	1mg/ml
Purification	Protein A

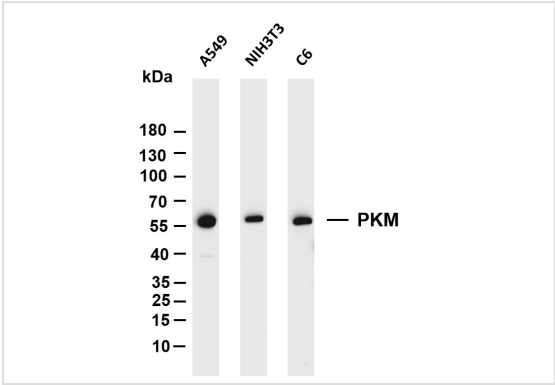
Target Information

Gene Symbol	PKM
Gene Synonyms	<div>PK3 TCB p58 OIP3 PKM2 CTHBP THBP1 HEL-S-30</div>
Gene Full Name	pyruvate kinase M1/2
Gene Summary	<p>This gene encodes a protein involved in glycolysis. The encoded protein is a pyruvate kinase that catalyzes the transfer of a phosphoryl group from phosphoenolpyruvate to ADP, generating ATP and pyruvate. This protein has been shown to interact with thyroid hormone and may mediate cellular metabolic effects induced by thyroid hormones. This protein has been found to bind Opa protein, a bacterial outer membrane protein involved in gonococcal adherence to and invasion of human cells, suggesting a role of this protein in bacterial pathogenesis. Several alternatively spliced transcript variants encoding a few distinct isoforms have been reported. [provided by RefSeq, May 2011]</p>

Molecular Weight(MW) 57kDa

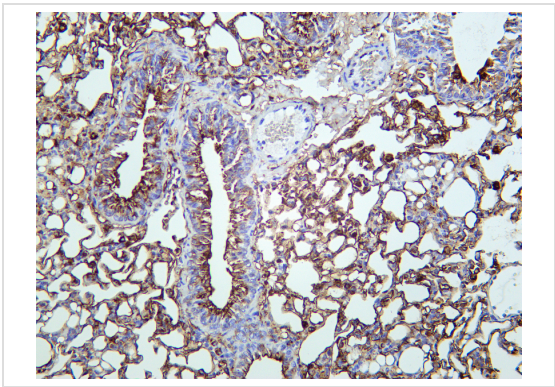
Cellular Localization Cytoplasm,Nucleus.

Application



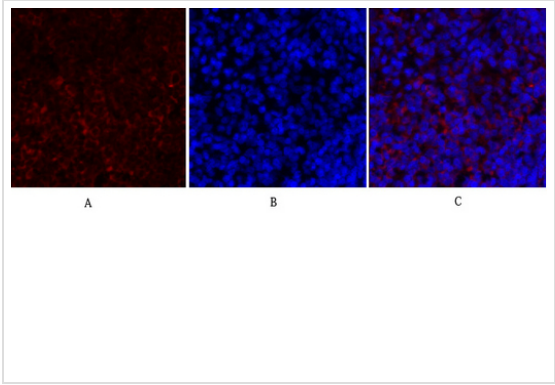
WB

Various whole cell lysates were separated by 4-20% SDS-PAGE, and the membrane was blotted with anti-PKM antibody. The HRP conjugated Goat anti-Rabbit IgG(H + L) antibody was used to detect the antibody. Lane 1: A549, Lane 2: NIH3T3, Lane 3: C6.



IHC

Mouse lung was stained with Anti-PKM rabbit antibody.



ICC/IF

Immunofluorescence analysis of rat-spleen tissue. 1,PKM2 Antibody(red) was diluted at 1:200(4°C,overnight). 2, Cy3 labled Secondary antibody was diluted at 1:300(room temperature, 50min).3, Picture B: DAPI(blue) 10min. Picture A:Target. Picture B: DAPI. Picture C: merge of A+B.

Application Notes
WB:1:1000-1:5000
IHC:1:200-1:1000
ICC/IF:1:200-1:1000

Additional Information

Form Liquid

Storage Instructions -15°C to -25°C/1 year(Do not lower than -25°C)

Storage Buffer PBS, 50% glycerol, 0.05% Proclin 300, 0.05%BSA

order@Omnimabs.com

506 N. GARFIELD AVE #210 ALHAMBRA, CA 91801

This product is for research use only and is not approved for use in humans or in clinical diagnosis. Primary Antibodies are guaranteed for 1 year from date of receipt

