



Catalog: OM644047

Scan to get more validated information



# Mouse Monoclonal Antibody to LAMP1

Catalog: OM644047

☐ 50ul ☐ 100ul

## Product profile

Product name	Mouse Monoclonal Antibody to LAMP1
Antibody Type	Primary Antibodies
Immunogen	Purified recombinant fragment of human LAMP1 (AA: 182-414) expressed in E. Coli.

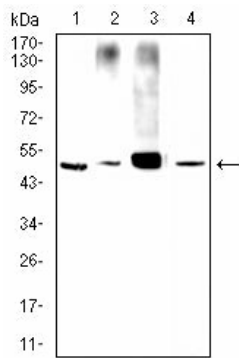
## Key Feature

Clonality	monoclonal
Isotype	IgG1
Host Species	Mouse
Tested Application	<b>FC</b> <b>ICC/IF</b> <b>IHC</b> <b>WB</b>  <b>WB:</b> 1:500-1:2000 <b>IHC:</b> 1:200-1:1000 <b>ICC/IF:</b> 1:200-1:1000 <b>FC:</b> 1:200-1:400
Species Reactivity	<b>Human</b> <b>Monkey</b>
Concentration	1mg/ml
Purification	Affinity purified

## Target Information

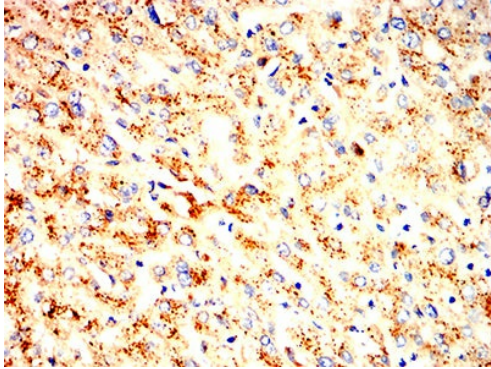
Gene Symbol	LAMP1
Gene Synonyms	LAMPA CD107a LGP120
Gene Full Name	lysosomal associated membrane protein 1
Gene Summary	The protein encoded by this gene is a member of a family of membrane glycoproteins. This glycoprotein provides selectins with carbohydrate ligands. It may also play a role in tumor cell metastasis. [provided by RefSeq, Jul 2008]
Molecular Weight(MW)	49kDa
Cellular Localization	Cell membrane,Endosome membrane,Lysosome membrane,Cytolytic granule membrane.

## Application



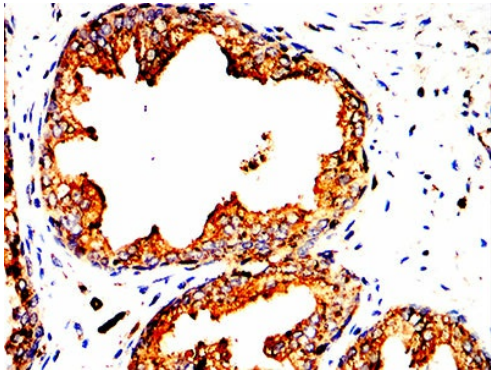
#### WB

Western blot analysis using LAMP1 mouse mAb against Hela (1), Ecv304 (2), A431 (3) and MCF-7 (4) cell lysate.



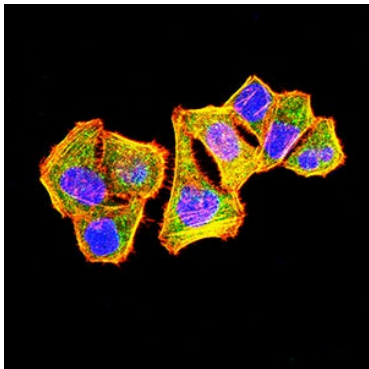
#### IHC

Immunohistochemical analysis of paraffin-embedded human liver tissues using LAMP1 mouse mAb with DAB staining.



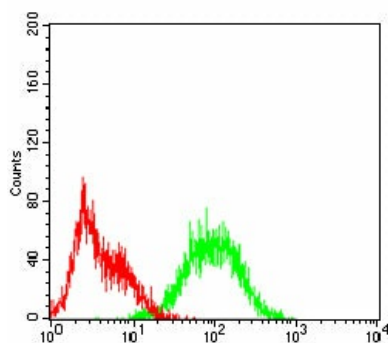
#### IHC

Immunohistochemical analysis of paraffin-embedded human prostatic cancer tissues using LAMP1 mouse mAb with DAB staining.



#### ICC/IF

Immunofluorescence analysis of Hela cells using LAMP1 mouse mAb (green). Blue: DRAQ5 fluorescent DNA dye. Red: Actin filaments have been labeled with Alexa Fluor- 555 phalloidin.



#### FC

Flow cytometric analysis of Hek293 cells using LAMP1 mouse mAb (green) and negative control (red).

**Application Notes**

**WB:**1:500-1:2000  
**IHC:**1:200-1:1000  
**ICC/IF:**1:200-1:1000  
**FC:**1:200-1:400

## Additional Information

---

**Form** Liquid

**Storage Instructions** Store at 4°C short term. Aliquot and store at -20°C long term. Avoid freeze/thaw cycles.

**Storage Buffer** Purified antibody in PBS with 0.05% sodium azide.

# OmnimAbs.com

---

order@Omnimabs.com

506 N. GARFIELD AVE #210 ALHAMBRA, CA 91801

This product is for research use only and is not approved for use in humans or in clinical diagnosis. Primary Antibodies are guaranteed for 1 year from date of receipt

---