



Catalog: OM644080

Scan to get more validated information



RIPK1/RIP Rabbit pAb

Catalog: OM644080

☐ 20ul ☐ 50ul ☐ 100ul

Product profile

Product name	RIPK1/RIP Rabbit pAb
Antibody Type	Primary Antibodies
Immunogen	A synthetic peptide corresponding to a sequence within amino acids 100-200 of human RIPK1/RIP (NP_003795.2).

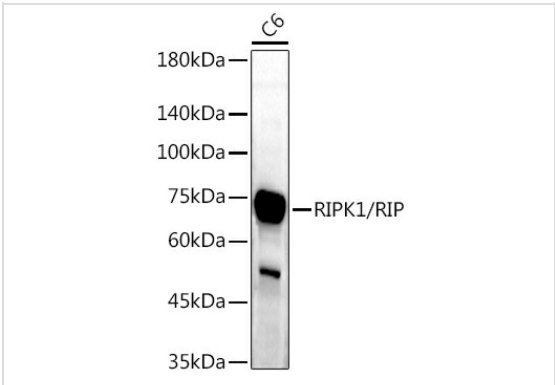
Key Feature

Clonality	polyclonal
Isotype	IgG
Host Species	Rabbit
Tested Application	<div>ICC/IF IHC WB</div> <div>WB:1:500-1:1000 IHC:1:50-1:200 ICC/IF:1:50-1:200</div>
Species Reactivity	<div>Human Mouse Rat</div>
Concentration	1mg/ml
Purification	Affinity purified

Target Information

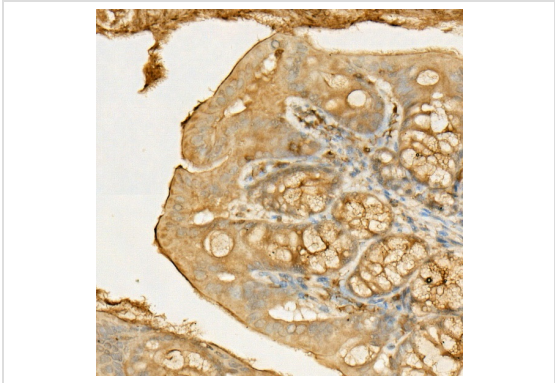
Gene Symbol	RIPK1
Gene Synonyms	RIP RIP1 AIEFL IMD57 RIP-1
Gene Full Name	receptor interacting serine/threonine kinase 1
Gene Summary	This gene encodes a member of the receptor-interacting protein (RIP) family of serine/threonine protein kinases. The encoded protein plays a role in inflammation and cell death in response to tissue damage, pathogen recognition, and as part of developmental regulation. RIPK1/RIPK3 kinase-mediated necrosis is referred to as necroptosis. Genetic disruption of this gene in mice results in death shortly after birth. [provided by RefSeq, Aug 2017]
Molecular Weight(MW)	76kDa(Observed MW 75/38kDa)
Cellular Localization	Cell membrane, Cytoplasm.

Application



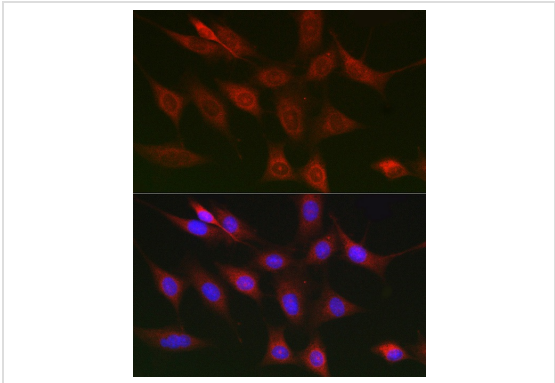
WB

Western blot analysis of lysates from C6 cells, using RIPK1/RIP Rabbit pAb at 1:1000 dilution. Secondary antibody: HRP Goat Anti-Rabbit IgG (H+L) at 1:10000 dilution. Lysates/proteins: 25µg per lane. Blocking buffer: 3% nonfat dry milk in TBST. Detection: ECL Enhanced Kit. Exposure time: 180s.



IHC

Immunohistochemistry analysis of paraffin embedded Mouse colon using RIPK1/RIP Rabbit pAb at dilution of 1:50 (40x lens). High pressure antigen retrieval performed with 0.01M Citrate Bufferr (pH 6.0) prior to IHC staining.



ICC/IF

Immunofluorescence analysis of NIH/3T3 cells using RIPK1/RIP Rabbit pAb at dilution of 1:100 (40x lens). Secondary antibody: Cy3 Goat Anti-Rabbit IgG (H+L) at 1:500 dilution. Blue: DAPI for nuclear staining.

Application Notes

WB:1:500-1:1000
IHC:1:50-1:200
ICC/IF:1:50-1:200

Additional Information

Form	Liquid
Storage Instructions	Store at -20I. Avoid freeze / thaw cycles.
Storage Buffer	Buffer: PBS with 0.01% thimerosal, 50% glycerol, pH7.3.

OmnimAbs.com