



Catalog: OM644335

Scan to get more validated information



CORIN Rabbit pAb

Catalog: OM644335

☐ 50ul ☐ 100ul

Product profile

Product name	CORIN Rabbit pAb
Antibody Type	Primary Antibodies
Immunogen	Recombinant fusion protein containing a sequence corresponding to amino acids 1-110 of human CORIN (NP_006578.2).

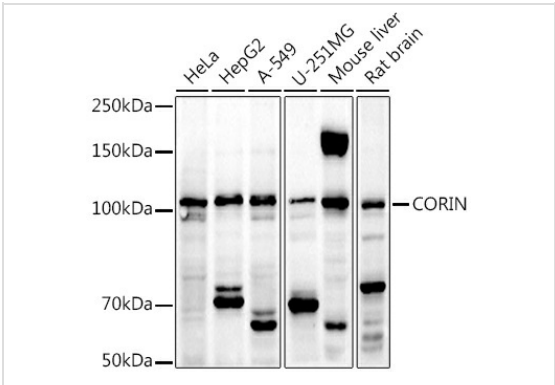
Key Feature

Clonality	polyclonal
Isotype	IgG
Host Species	Rabbit
Tested Application	WB WB:1:500-1:1000
Species Reactivity	Human Mouse Rat
Concentration	1mg/ml
Purification	Affinity purified

Target Information

Gene Symbol	CORIN
Gene Synonyms	CRN ATC2 Lrp4 PEE5 CMH30 TMPRSS10
Gene Full Name	corin, serine peptidase
Gene Summary	This gene encodes a member of the type II transmembrane serine protease class of the trypsin superfamily. Members of this family are composed of multiple structurally distinct domains. The encoded protein converts pro-atrial natriuretic peptide to biologically active atrial natriuretic peptide, a cardiac hormone that regulates blood volume and pressure. This protein may also function as a pro-brain-type natriuretic peptide convertase. Multiple alternatively spliced transcript variants encoding different isoforms have been found for this gene. [provided by RefSeq, Jun 2013]
Molecular Weight(MW)	116kDa
Cellular Localization	Cell membrane, Secreted, Single-pass type II membrane protein, Single-pass type II membrane protein.

Application



WB

Western blot analysis of extracts of various cell lines, using CORIN antibody at 1:1000 dilution. Secondary antibody: HRP Goat Anti-Rabbit IgG (H+L) at 1:10000 dilution. Lysates/proteins: 25µg per lane. Blocking buffer: 3% nonfat dry milk in TBST. Detection: ECL Basic Kit. Exposure time: 180s.

Application Notes

WB:1:500-1:1000

Additional Information

Form	Liquid
Storage Instructions	Store at -20℥. Avoid freeze / thaw cycles.
Storage Buffer	PBS with 0.02% sodium azide, 50% glycerol, pH7.3.

OmnimAbs.com

order@Omnimabs.com
506 N. GARFIELD AVE #210 ALHAMBRA, CA 91801
This product is for research use only and is not approved for use in humans or in clinical diagnosis.Primary Antibodies are guaranteed for 1 year from date of receipt