



Catalog: OM221175

Scan to get more validated information



# SLC16A3 Antibody (C-term)

Catalog: OM221175

☐ 20ul ☐ 50ul ☐ 100ul

## Product profile

Product name	SLC16A3 Antibody (C-term)
Antibody Type	Primary Antibodies

## Key Feature

Clonality	Polyclonal
Isotype	Ig
Host Species	Rabbit
Tested Application	<b>WB</b> <b>IHC</b> WB:1:100~500 IHC
Species Reactivity	<b>Human</b>
Concentration	1mg/ml

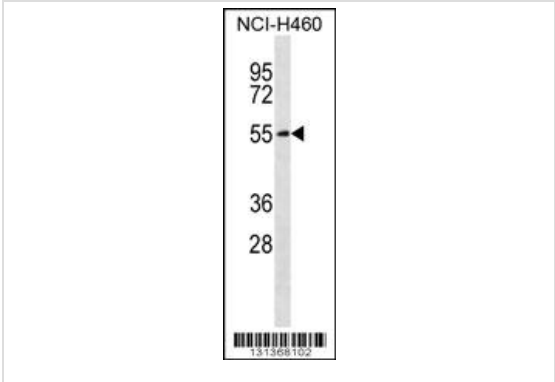
## Target Information

Gene Synonyms	MCT4
Alternative Names	SLC16A3 MCT4 Monocarboxylate transporter 4 Solute carrier family 16 member 3
Molecular Weight(MW)	49469 Da
Function	Proton-linked monocarboxylate transporter. Catalyzes the rapid transport across the plasma membrane of many monocarboxylates such as lactate, pyruvate, branched-chain oxo acids derived from leucine, valine and isoleucine, and the ketone bodies acetoacetate, beta-hydroxybutyrate and acetate (By similarity)
Tissue Specificity	Highly expressed in skeletal muscle.
Cellular Localization	Cell membrane; Multi-pass membrane protein.

## Database Links

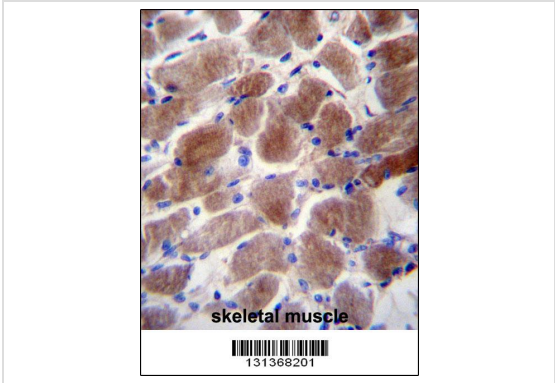
Entrez Gene	9123
Nucleotide Accession	NP_001035887.1 NP_001035888.1

# Application



## Application

SLC16A3 Antibody (C-term) western blot analysis in NCI-H460 cell line lysates (35ug/lane). This demonstrates the SLC16A3 antibody detected the SLC16A3 protein (arrow).



## Application

SLC16A3 Antibody (C-term) immunohistochemistry analysis in formalin fixed and paraffin embedded human skeletal muscle followed by peroxidase conjugation of the secondary antibody and DAB staining. This data demonstrates the use of SLC16A3 Antibody (C-term) for immunohistochemistry. Clinical relevance has not been evaluated.

**Application Notes**      **WB:**1:100~500 **IHC**

# Additional Information

Form	Liquid
Storage Instructions	For short-term storage, store at 4° C. For long-term storage, aliquot and store at -20°C or below. Avoid multiple freeze-thaw cycles.
Storage Buffer	Purified polyclonal antibody supplied in PBS with 0.09% (W/V) sodium azide. This antibody is purified through a protein A column, followed by peptide affinity purification.

# OmnimAbs.com

order@Omnimabs.com  
506 N. GARFIELD AVE #210 ALHAMBRA, CA 91801  
This product is for research use only and is not approved for use in humans or in clinical diagnosis. Primary Antibodies are guaranteed for 1 year from date of receipt