



Catalog: OM112647

Scan to get more validated information



Rabbit anti-ST3GAL2 polyclonal antibody - C-terminal region

Catalog: OM112647

☐ 20ul ☐ 50ul ☐ 100ul

Product profile

Product name	Rabbit anti-ST3GAL2 polyclonal antibody - C-terminal region
Antibody Type	Primary Antibodies
Immunogen	The immunogen for anti-ST3GAL2 antibody: synthetic peptide directed towards the C terminal of human ST3GAL2
Modification	Unmodification

Key Feature

Clonality	Polyclonal
Isotype	IgG
Host Species	Rabbit
Tested Application	WB WB: 1:500~1:2000 Notes: Optimal dilutions/concentrations should be determined by the researcher.
Species Reactivity	Bovine Dog Horse Human Mouse Rabbit Rat Zebra Fish
Concentration	1mg/ml
Purification	Affinity purified

Target Information

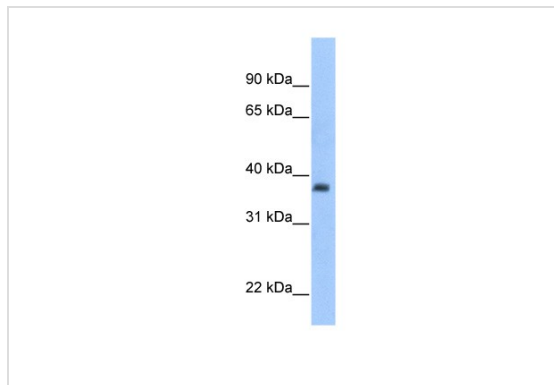
Gene Symbol	ST3GAL2
Gene Synonyms	Gal-NAc6S SIAT4B ST3GALII ST3GalA.2
Gene Full Name	ST3 beta-galactoside alpha-2,3-sialyltransferase 2
Gene Summary	ST3GAL2 is a type II membrane protein that catalyzes the transfer of sialic acid from CMP-sialic acid to galactose-containing substrates. The protein is normally found in the Golgi but can be proteolytically processed to a soluble form. This protein, which is a member of glycosyltransferase family 29, can use the same acceptor substrates as does sialyltransferase 4A. The protein encoded by this gene is a type II membrane protein that catalyzes the transfer of sialic acid from CMP-sialic acid to galactose-containing substrates. The encoded protein is normally found in the Golgi but can be proteolytically processed to a soluble form. This protein, which is a member of glycosyltransferase family 29, can use the same acceptor substrates as does sialyltransferase 4A.

Alternative Names	Gal-NAc6S
	SIAT4B
	ST3GALII
	ST3GalA.2
Molecular Weight(MW)	40kDa
Sequence	350 amino acids

Database Links

Entrez Gene	6483
SwissProt ID	Q16842
Protein Accession	NP_008858

Application



Western blot

0.2-1 ug/ml Positive Control: Human heart

Application Notes	WB:1:500~1:2000
	Notes:Optimal dilutions/concentrations should be determined by the researcher.

Additional Information

Form	Liquid
Storage Instructions	Aliquot and store at -20°C. Avoid repeated freeze / thaw cycles
Storage Buffer	phosphate buffered saline , pH 7.4, 150mM NaCl, 0.02% sodium azide and 50% glycerol.

OmnimAbs.com

order@Omnimabs.com

506 N. GARFIELD AVE #210 ALHAMBRA, CA 91801

This product is for research use only and is not approved for use in humans or in clinical diagnosis. Primary Antibodies are guaranteed for 1 year from date of receipt